

Super Bonus 1: Trees

Part I: Family Trees

1. What is the longest fully tracked family tree known today?
2. In what way were Charles II of Spain's parents related? (Among other ways...)
3. How many unique great-grandparents did Alfonso XII of Spain have?
4. According to Genesis, Abraham descended from which of Noah's sons?
5. What makes the Targaryen family tree unique in Westeros?

Part II: Language Trees

6. What are the two subfamilies of Tolkien's Elvish languages?
7. What is the closest surviving relative of the English and Scots languages?
8. The Malagasy language, spoken in Madagascar, is a member of what language family?
9. Finnish and Hungarian are both members of what major language family?
10. According to xkcd, what language of the same family as Finnish and Hungarian was Shakespeare originally written in, according to science fiction lore?
11. What famous language isolate is found in France and Spain?

Part III: Regular Trees

Given the country/state, name the national tree.

12. Canada
13. Lebanon
14. Oregon
15. Malta
16. China
17. England
18. Germany
19. Russia
20. Israel
21. Japan

Superlative Trees: Answer the questions about the heaviest, tallest, and oldest trees.

22. What type of tree are the oldest trees in the world?
23. Where is the oldest one located?
24. What is the largest living single stem tree by volume on earth?
25. Where is it located?
26. What is the tallest living tree?
27. Where is it located?
28. What species is it?
29. What is the widest tree in terms of canopy area?
30. Where is it located?
31. What is the heaviest known organism?
32. What species is it?
33. What sex is it?

34. Where is it?
35. The record for rooting depth is held by a Shepherd's Tree located in what desert?

General Trees

36. Disease that has devastated American and European elm trees.
37. What animal is the vector for the disease?
38. Theory that explains how trees manage to pull water from roots to leaves.
39. Tree growing on a tree.
40. A specimen of this "living fossil" species, also known as the maidenhair tree, may be found on a path near the Mission Park dorm at Williams College.
41. The earliest tree-like organisms, including tree ferns and horsetails, emerged in this geologic period, when many coal beds were formed.

Part IV: "Trees"

Answer the following questions about marijuana.

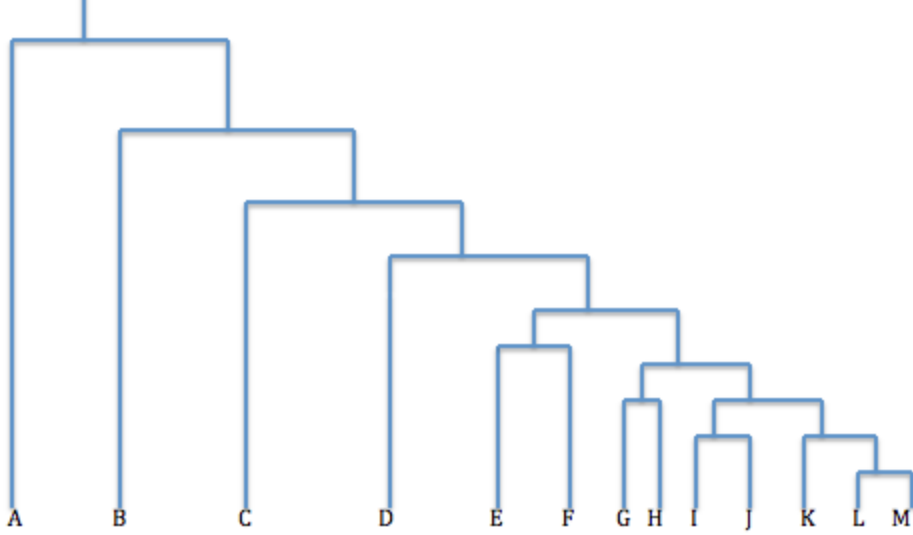
42. How many blunts per day did Snoop Lion claim to smoke daily in his 2012 Reddit AMA?
43. What is THC an abbreviation for?
44. On which continent did cannabis originally grow?
45. How would Arrested Development's George Michael Bluth take his weed?

Part V: Fictional Trees

46. Norse Tree
47. World of Warcraft Tree
48. LOTR trees
49. Pokemon professor trees
50. Dr. Seuss's speaker for the trees
51. Harry Potter tree
52. Mayan tree

Part VI: Fill in the missing leaves of the trees on the following 7 pages.

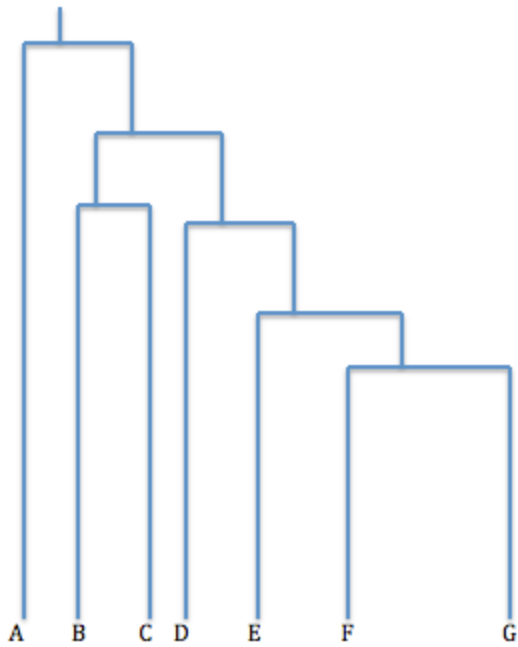
ARCHAEPLASTIDAE



Word Bank:

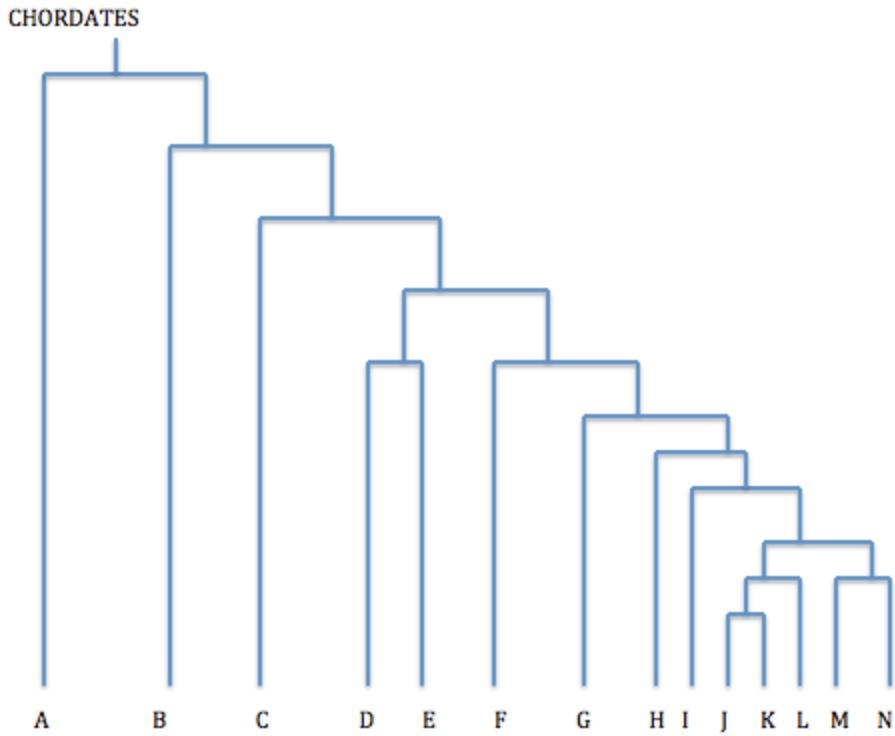
- Pine
- Ginkgo
- Tulip
- Tree Fern
- Horsetail
- Oak
- Tobacco
- Sea Lettuce
- Liverwort
- Moss
- Clubmoss
- Red Algae
- Spikemoss

ARTHROPODS



Word Bank:

- Monarch Butterfly
- Black Widow Spider
- Millipede
- Water Bears
- Lobster
- Horseshoe Crab
- Earwig



Word Bank:

Echidna

Crocodile

Coelacanth

Ostrich

Rabbit Fish

Salmon

Lungfish

Salamander

Human

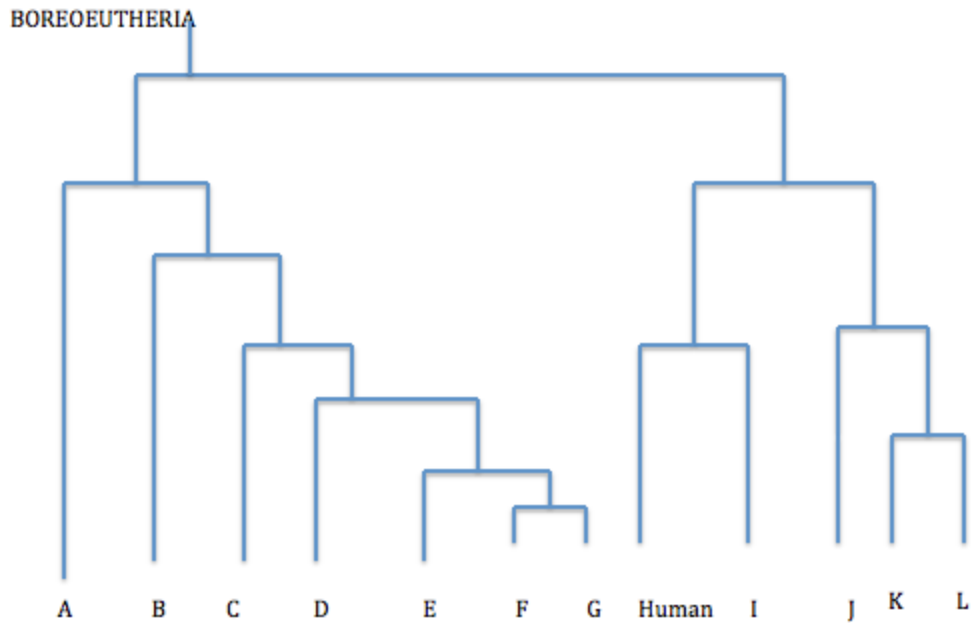
Sea squirt

Lancet

Lamprey

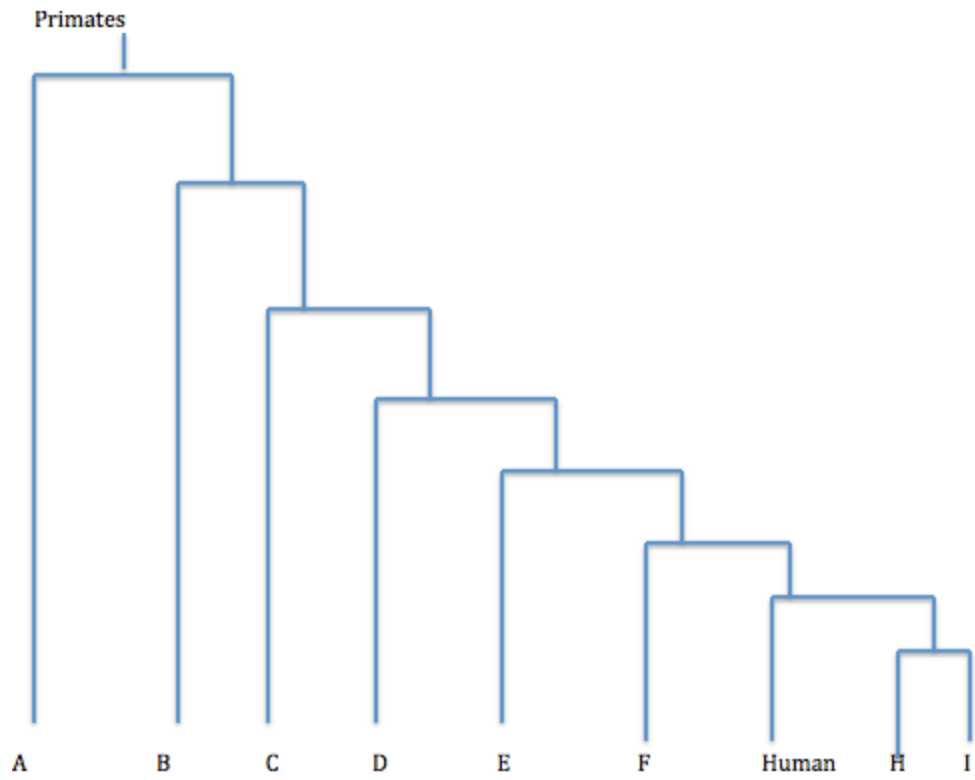
Great White Shark

Opossum

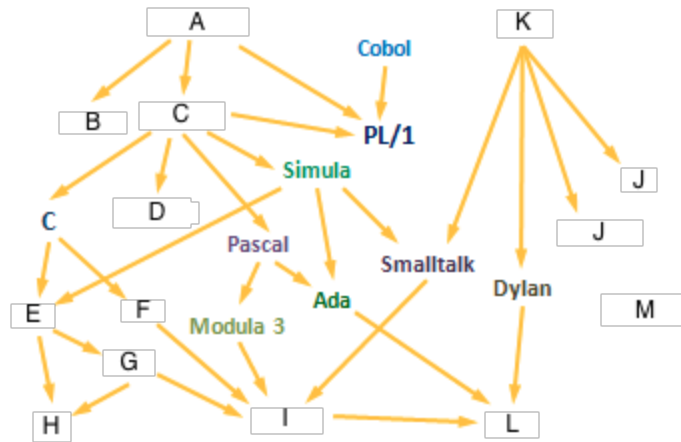


Word Bank:

- Shrew
- Sea otter
- Pangolin
- North American Porcupine
- Panther
- Bear
- Rabbit
- Wolf
- Human
- Tree Shrew
- Whale
- Mouse



- Word Bank:
- Macaque
 - Orangutan
 - Gorilla
 - Aye-Aye
 - Chimpanzee
 - Bonobo
 - Gibbon
 - Human
 - Marmoset
 - Flying Lemur
 - Tree Shrew



Word Bank:

- LISP
- Fortran
- Algol 60
- BASIC
- Algol 68
- Perl
- Scheme
- Prolog
- ML
- Ruby
- Python
- Java
- C++
- C#

The Black Family - Harry Potter

Any Potter fan knows that the Black family is obsessed with the purity of its family tree. When members of the family stepped out of line, they were “burned” from the family tree. Try to fill in these mudbloods and rejects



The Noble and Most Ancient House of BLACK

(there are many stories between the lines)

