

Super Bonus 1: Trees

Part I: Family Trees

1. What is the longest fully tracked family tree known today? **Confucius'**
2. In what way were Charles II of Spain's parents related? (Among other ways...) **Uncle and niece**
3. How many unique great-grandparents did Alfonso XII of Spain have? **4**
4. According to Genesis, Abraham descended from which of Noah's sons? **Shem**
5. What makes the Targaryen family tree unique in Westeros? **Siblings frequently married each other**

Part II: Language Trees

6. What are the two subfamilies of Tolkien's Elvish languages? **Avarin and Eldarin**
7. What is the closest surviving relative of the English and Scots languages? **Frisian**
8. The Malagasy language, spoken in Madagascar, is a member of what language family? **Austronesian**
9. Finnish and Hungarian are both members of what major language family? **Uralic (Can also accept Finno-Ugric)**
10. What language of the same family as Finnish and Hungarian was Shakespeare originally written in, according to science fiction lore? **Klingon**
11. What famous language isolate is found in France and Spain? **Basque**

Path III: Regular trees

Trees associated with places:

12. Canada: **Maple**
13. Lebanon: **Cedar**
14. Oregon: **Redwood**
15. Malta: **Palm**
16. China: **Ginkgo**
17. England: **Royal Oak**
18. Germany: **Oak**
19. Russia: **Siberian Fir**
20. Israel: **Olive**
21. Japan: **Cherry**

Superlatives. Biggest, tallest, oldest, widest roots, most extreme conditions

22. What type of tree are the oldest trees in the world? **Bristlecone pines**
23. Where is the oldest one located? **California**
24. What is the largest living single stem tree by volume on earth? **General Sherman**
25. Where is it located? **California**

26. What is the tallest living tree? **Hyperion Tree**
27. Where is it located? **California**
28. What species is it? **Coast Redwood**
29. What is the widest tree in terms of canopy area? **The Great Banyan**
30. Where is it located? **India - fooled you!**
31. What is the heaviest known organism? **Pando**
32. What species is it? **Quaking Aspen**
33. What sex is it? **Male**
34. Where is it? **Utah**
35. The record for rooting depth is held by a Shepherd's Tree located in what desert?
Kalahari

General Trees

36. Disease that has devastated American and European elm trees. **Dutch Elm Disease**
37. What animal is the vector for the disease? **(Elm bark) Beetle**
38. Theory that explains how trees manage to pull water from roots to leaves.
Cohesion-Tension Theory
39. Tree growing on a tree. **Epiphyte**
40. A specimen of this "living fossil" species, also known as the maidenhair tree, may be found on a path near the Mission Park dorm at Williams College. **Ginkgo biloba**
41. The earliest tree-like organisms, including tree ferns and horsetails, emerged in this geologic period, when many coal beds were formed. **Carboniferous**

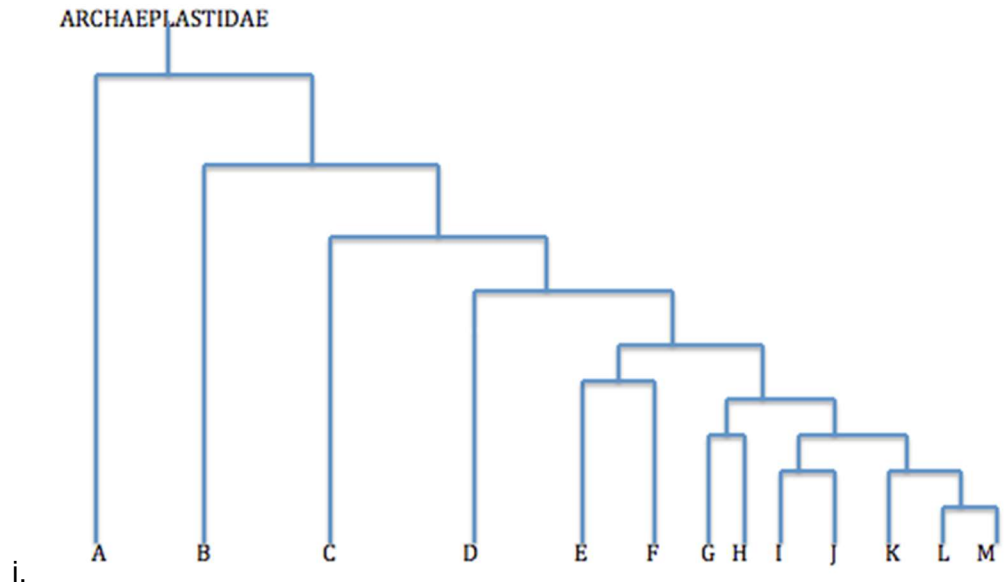
Part IV: Marijuana

42. How many blunts per day did Snoop Lion claim to smoke daily in his 2012 Reddit AMA? **81**
43. What is THC an abbreviation for? **Tetrahydrocannabinol**
44. On which continent did cannabis originally grow? **Asia**
45. How would Arrested Development's George Michael Bluth take his weed? **Smoke it like a cigarette**

Part V: Fictional/Mythological Trees

46. Norse Tree **Yggdrassil**
47. World of Warcraft Tree **Nordrassil**
48. LOTR trees **Ents**
49. Pokemon professor trees **Oak, Elm, Birch**
50. Dr. Seuss's speaker for the trees **The Lorax**
51. Harry Potter tree **The Whomping Willow**
52. Mayan tree **wacah chan or yax imix che**

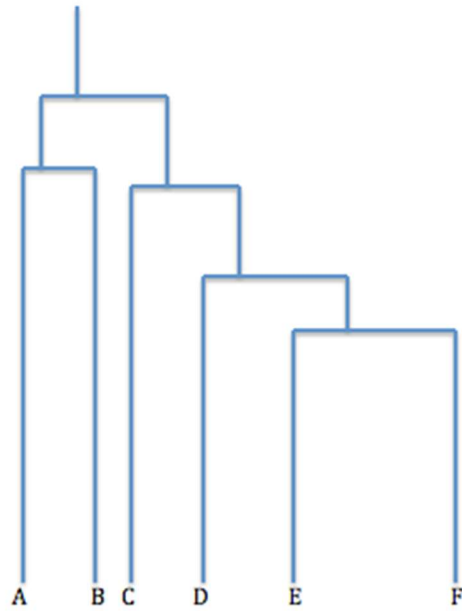
Part VI: Visualizations



A. Word Bank: Pine, Tulip, Red Algae, Sea Lettuce, Oak, Tobacco, Liverwort, Moss, Kelp, Clubmoss, Spikemoss, Euglena, Horsetail, Tree Fern, Yeast, Ginkgo

- A. Red Algae
- B. Sea Lettuce
- C. Liverwort
- D. Moss
- E. Clubmoss
- F. Spikemoss
- G. Horsetail
- H. Tree Fern
- I. Ginkgo
- J. Pine
- K. Tulip
- L. Oak
- M. Tobacco

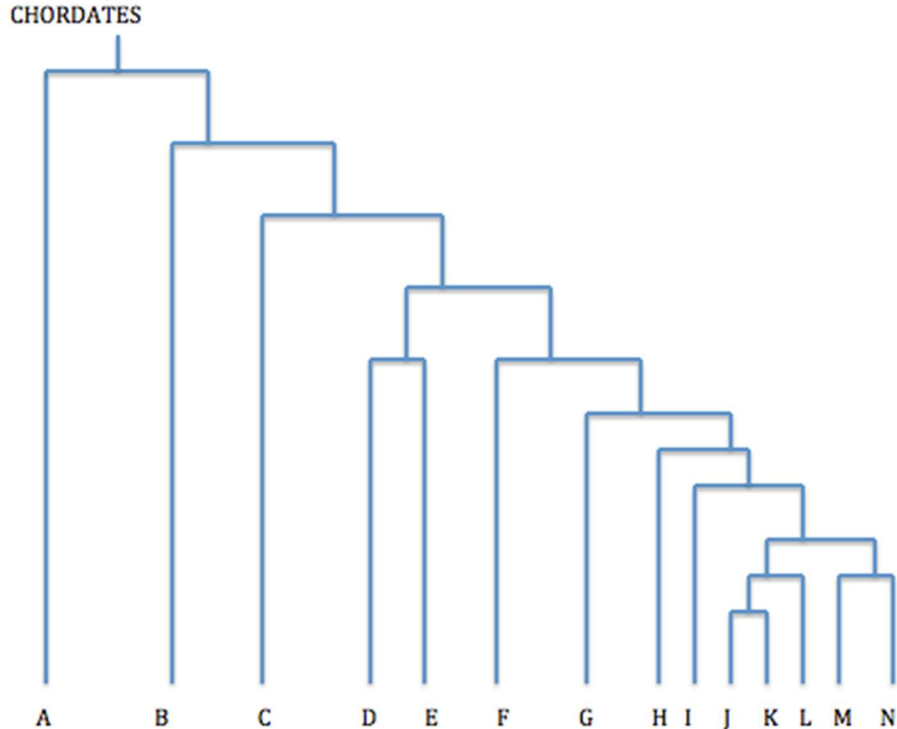
ARTHROPODS



ii.

A. Word Bank: Horseshoe Crab, Velvet Worm, Millipede, Lobster, Monarch Butterfly, Nematode, Water Bear, Octopus, Earwig, Black Widow Spider

- A. Horseshoe Crab
- B. Black Widow Spider
- C. Millipede
- D. Lobster
- E. Earwig
- F. Monarch Butterfly

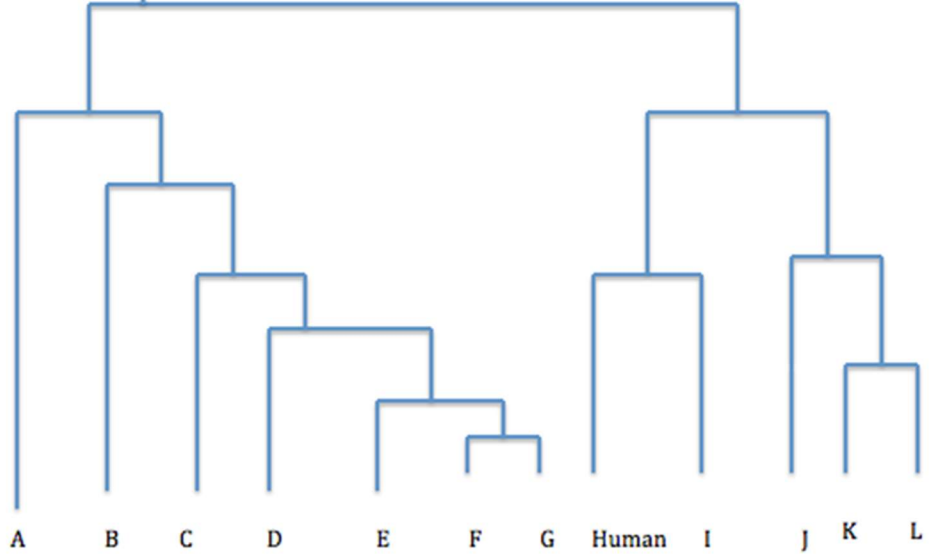


iii.

A. Word Bank: Lungfish, Sea squirt, Lamprey, Ostrich, Opossum, Great White Shark, Starfish, Crocodile, Human, Sea Urchin, Rabbit Fish, Coelacanth, Lancet, Salmon, Salamander, Echidna

- A. Lancet
- B. Sea squirt
- C. Lamprey
- D. Great White Shark
- E. Rabbit Fish
- F. Salmon
- G. Coelacanth
- H. Lungfish
- I. Salamander
- J. Human
- K. Opossum
- L. Echidna
- M. Crocodile
- N. Ostrich

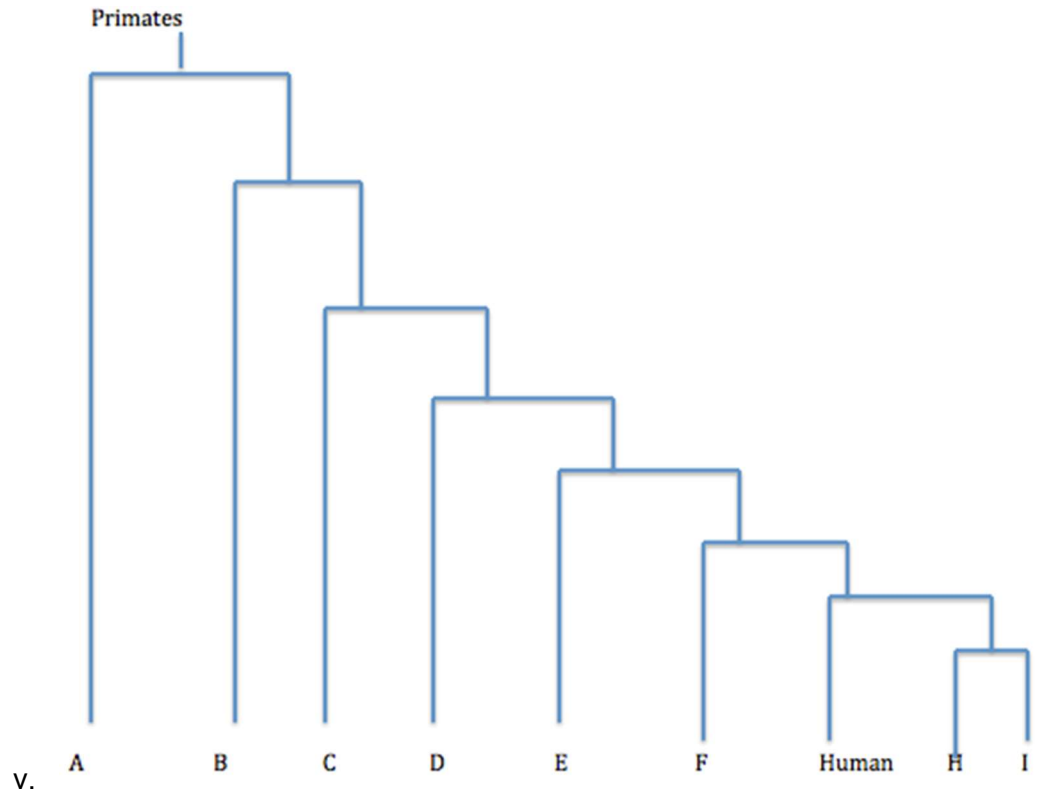
BOREOEUTHERIA



iv.

A. Word Bank: Kangaroo, North American Porcupine, Panther, Wolf, Human, Armadillo, Shrew, Sea otter, Tree Shrew, Pangolin, Whale, Elephant, Bear, Rabbit, Mouse, Sloth

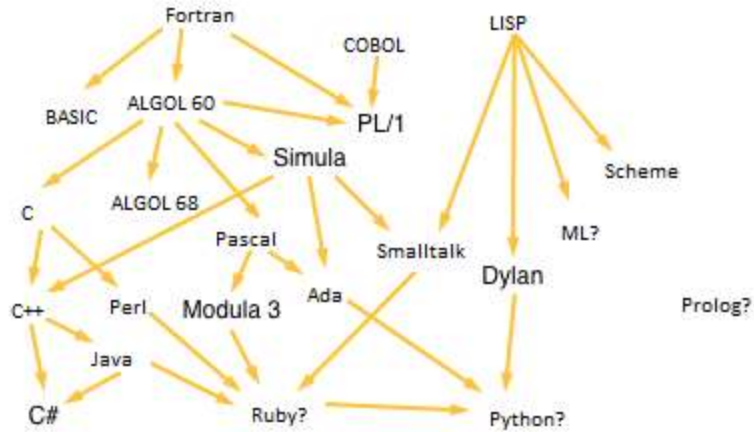
- A. Shrew
- B. Whale
- C. Pangolin
- D. Panther
- E. Bear
- F. Sea Otter
- G. Wolf
- H. Human
- I. Tree Shrew
- J. Rabbit
- K. Mouse
- L. North American Porcupine



v.

A. Word Bank: Macaque, Orangutan, Gorilla, Aye-Aye, Chimpanzee, Bonobo, Gibbon, Human, Marmoset, Flying Lemur, Tree Shrew

- A. Aye-Aye
- B. Marmoset
- C. Macaque
- D. Gibbon
- E. Orangutan
- F. Gorilla
- G. Human
- H. Chimpanzee
- I. Bonobo



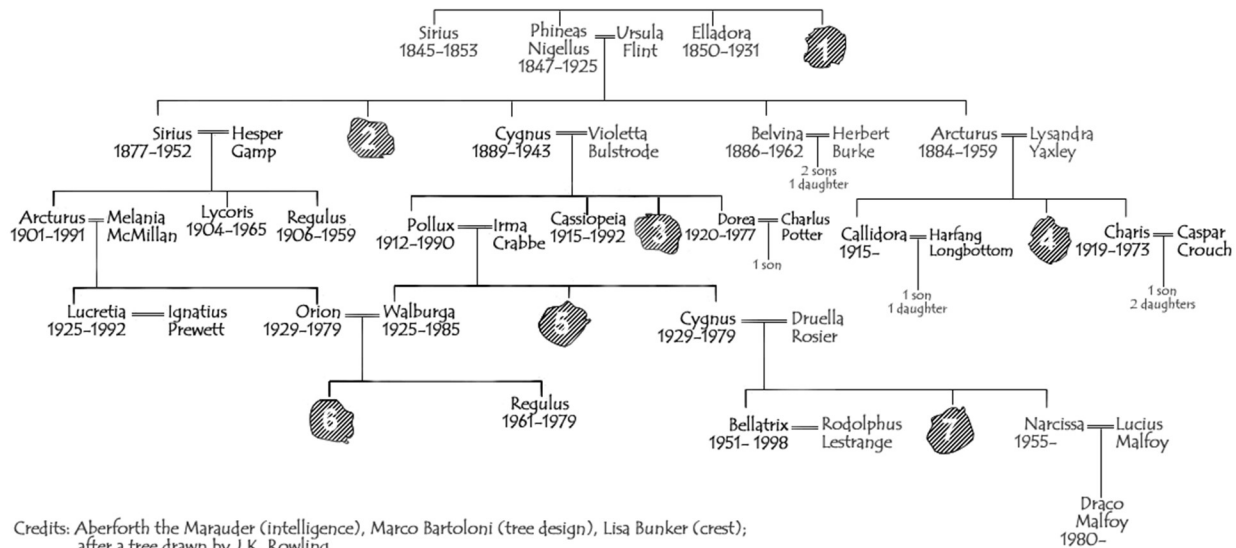
vi.

53. Any Potter fan knows that the Black family is obsessed with the purity of its family tree. When members of the family stepped out of line, they were “burned” from the family tree. Try to fill in these mudbloods and rejects



The Noble and Most Ancient House of BLACK

(there are many stories between the lines)



Credits: Aberforth the Marauder (intelligence), Marco Bartoloni (tree design), Lisa Bunker (crest); after a tree drawn by J.K. Rowling.

Key (removed from tree)

- 1: Isla Black, who 'married muggle Bob Hitchens'**
- 2: Phineas, who 'supported muggle rights'**
- 3: Marius, 'a squib'**
- 4: Cedrella, who 'married Septimus Weasley'**
- 5: Alphard, who 'gave gold to his runaway nephew'**
- 6: Sirius, who 'ran away'**
- 7: Andromeda, who 'married muggle Ted Tonks'**