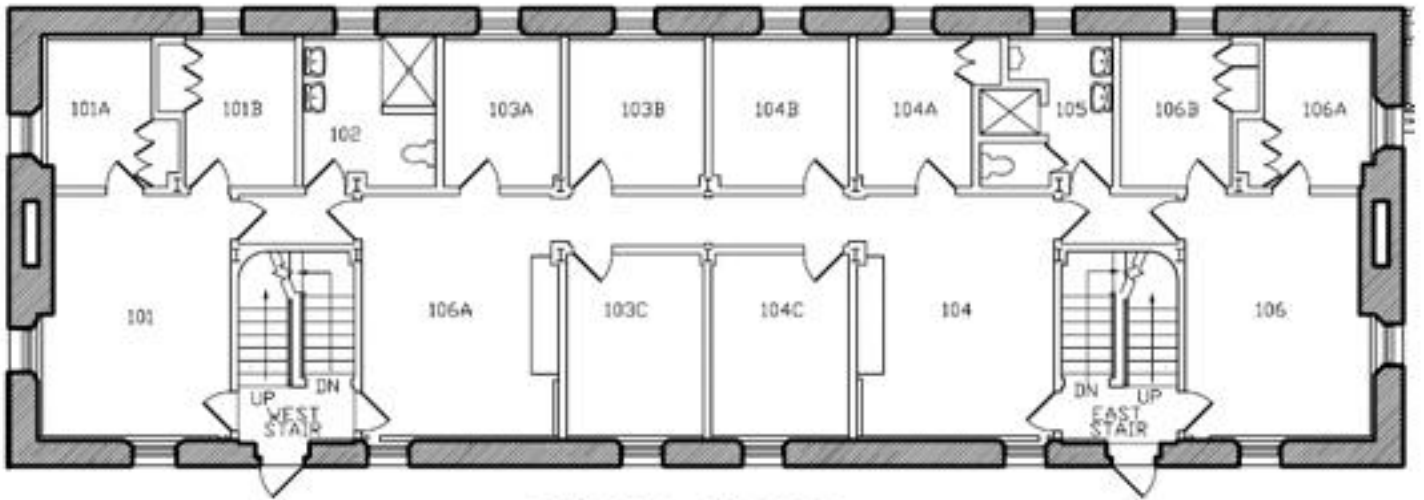




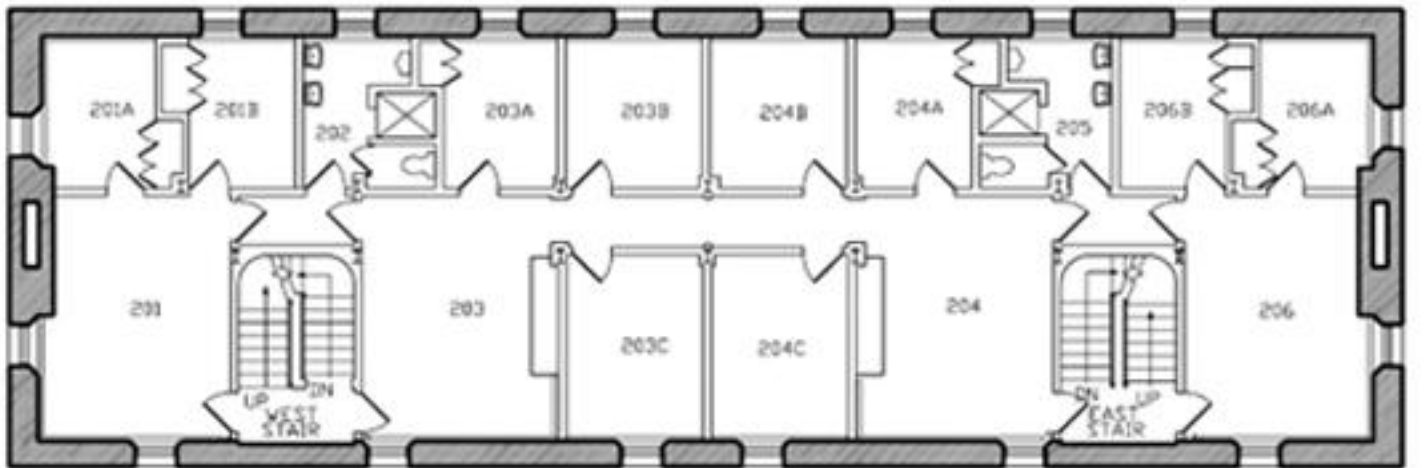
\* Indicates that the rooms have been identified to be noisy due to external house related noises. Please see the room sheets for the specific source of noise.

No Doubles

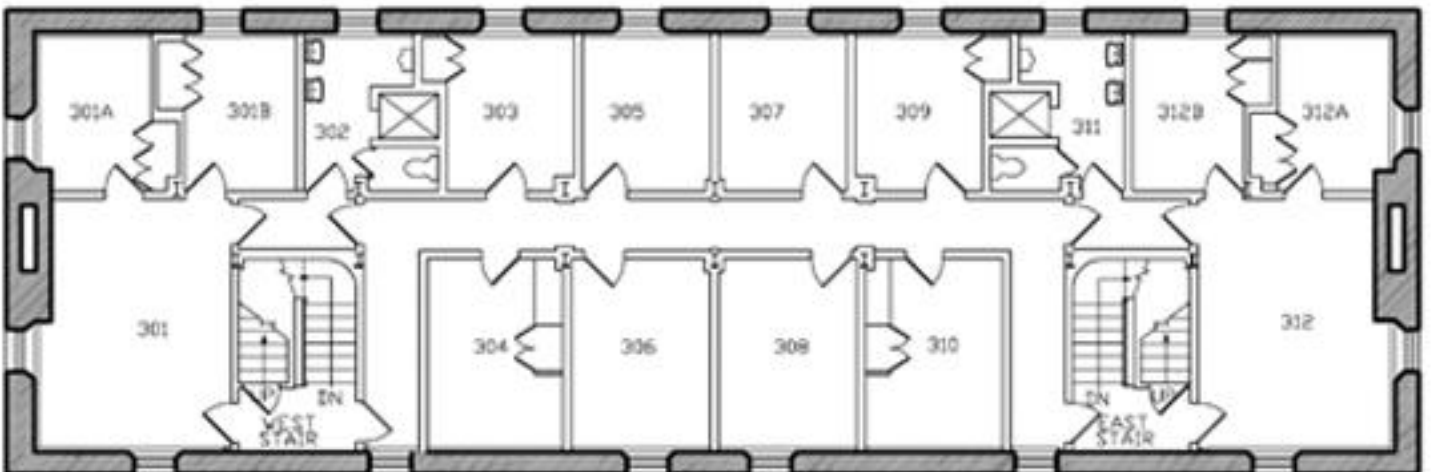
Basement common space floor plan not available.



FIRST FLOOR



SECOND FLOOR



THIRD FLOOR

# Lehman

(Single)

## Basic Facts

*Floor:* Carpeted

*Furniture included:*

- Bed (Lofted)
- Desk
- Dresser (Drawers Only)
- Chair
- Bookcase

*Adjustable Bed Height:* Yes

*Closet:* Either Closet or Bureau

*White Board on door:* No

*Slanted Ceilings:* No

## Light

*Number of Windows:* 1

*Plenty of natural light:* Yes on the side of the building facing Route 2, no on the side facing Mission

*Time of day with most light:* Don't notice

*Without additional light, the room is well lit:* No, the lofted bed shadows the desk and the rest of the floor.

## Temperature

*Room Temperature:* Hot

*Ability to adjust heat:* There is no way to adjust the head

## Unique Quirks

There is a lofted bed over the large desk. You can successfully unbunk the bed if you don't mind being able to open only one door of the bureau/closet. The room is small, but the common room makes up for it.



## Bathroom

People who share the bathroom: 4-5

Sinks: 1

Toilets: 1

Urinals : 1

Bathtubs: 1 shower

Windows: 1 window