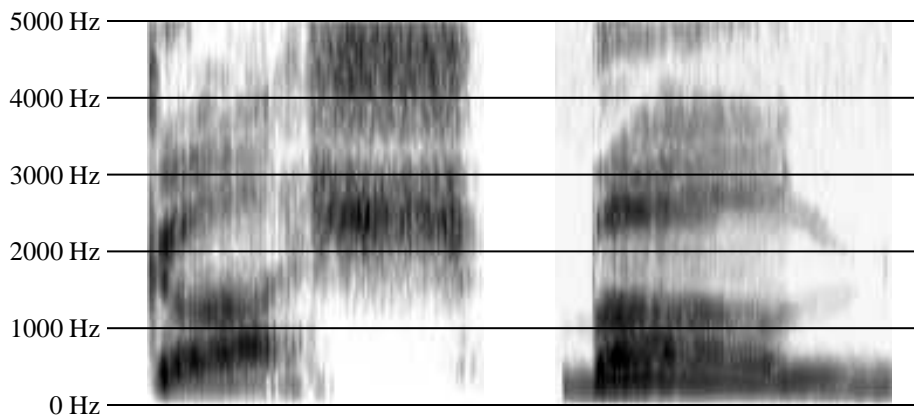
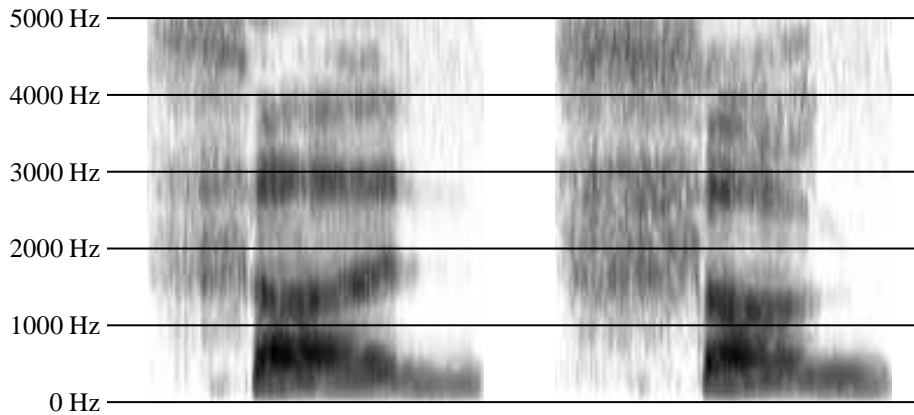
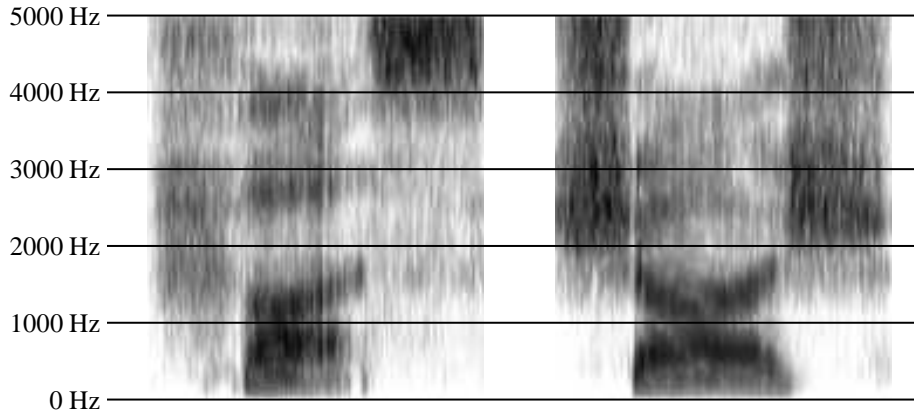


Problem 1. The following spectrograms are of common one-syllable words of English consisting of the vowel [ʌ] surrounded by two consonants, which may be voiceless fricatives or voiced oral stops. Determine what words are depicted in the spectrograms, and for each, give both the standard spelling and the IPA transcription.



Problem 2. The following waveform and spectrogram are of an ordinary English sentence. Draw vertical lines dividing the waveform and spectrogram into obvious segments, number each segment from left to right, and on separate paper, describe each segment as precisely as possible: “some sort of approximant”, “silence”, “release burst of a stop”, “some sort of nasal”, “[a]”, “diffuse fricative”, “high or mid front vowel”, etc. From your descriptions, try to determine as many words as possible, if not the entire sentence.

