

Match the movie or tv show with the Comic Book it is based on:

1.



2.



3.



4.



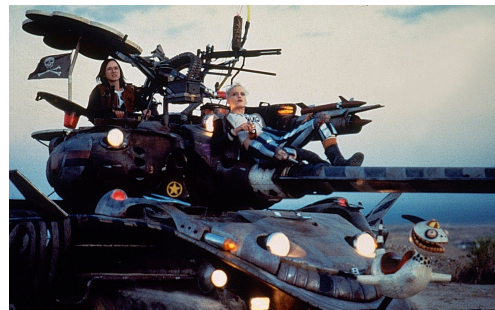
5.



6.



7.



8.



9.



10.



11



12



13



14



15



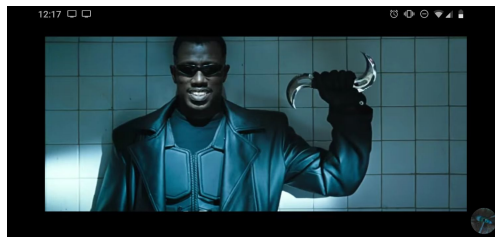
16



17



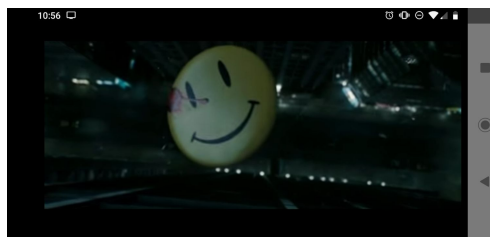
18



19



20



21





22



23



24



25



26



27



28



29



30



31



32



33



34



35



36



37



38



39



40





41



42



43



44



45



46



47



48



49



50



Match these comics with the above movie or tv adaptations.

a



d



g



b



e



h



c



f



i





j



n



q



k



o



r



l



s



m



p





JUST A BUNCH OF RUFFIANS OUT JOYRIDING FOR KICKS.

ssip

WELL THEY GOT THEM.

RUFFIANS? ASKING LASER GUNS?

[illegible][illegible]

Two comic book panels from X-Men: The Movie. The left panel shows Wolverine in his blue and yellow suit, lunging forward with claws extended. The right panel shows Wolverine in his red and yellow suit, lunging forward with claws extended. Both panels have speech bubbles and a yellow box with text.

[illegible]

The comic book spread is a 12-page sequence from 'The Dark Knight Returns'. The pages are arranged in a 3x4 grid. The first page (top left) shows Batman in his iconic suit, with the 'Dark Knight' logo on his chest. The second page (top middle) shows Batman in his iconic suit, with the 'Dark Knight' logo on his chest. The third page (top right) shows Batman in his iconic suit, with the 'Dark Knight' logo on his chest. The fourth page (middle left) shows Batman in his iconic suit, with the 'Dark Knight' logo on his chest. The fifth page (middle middle) shows Batman in his iconic suit, with the 'Dark Knight' logo on his chest. The sixth page (middle right) shows Batman in his iconic suit, with the 'Dark Knight' logo on his chest. The seventh page (bottom left) shows Batman in his iconic suit, with the 'Dark Knight' logo on his chest. The eighth page (bottom middle) shows Batman in his iconic suit, with the 'Dark Knight' logo on his chest. The ninth page (bottom right) shows Batman in his iconic suit, with the 'Dark Knight' logo on his chest. The tenth page (bottom left) shows Batman in his iconic suit, with the 'Dark Knight' logo on his chest. The eleventh page (bottom middle) shows Batman in his iconic suit, with the 'Dark Knight' logo on his chest. The twelfth page (bottom right) shows Batman in his iconic suit, with the 'Dark Knight' logo on his chest.



ae



af



ag



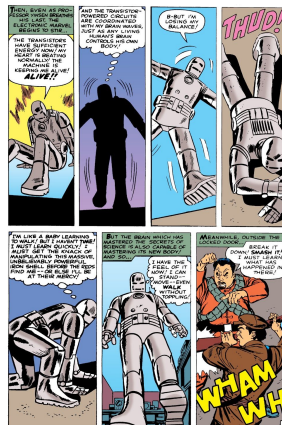
ah



ai



aj



ak



al



am





an



ao



ap



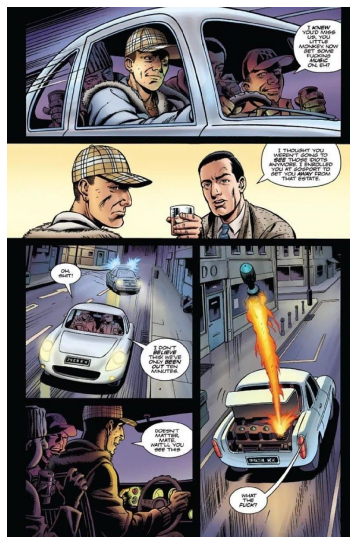
aq



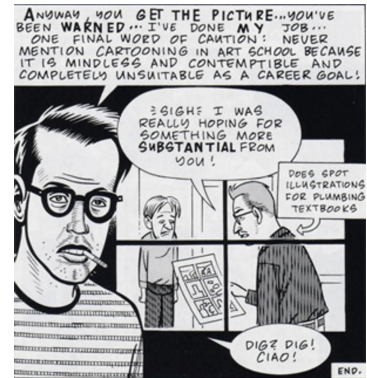
ar



as



at



au



av



Posted in r/DCcomics

reddit



aw



ax

