

Roguelike-like

Roguelike is a subgenre of role-playing video games characterized by procedurally generated levels, turn-based gameplay, grid-based movement, and permanent death of the player character. The genre's namesake comes from a series of video games inspired by the 1980 game *Rogue* (hence *Rogue-like*). These questions are inspired by the roguelike genre (hence Roguelike-like).

Part 1: Like *Rogue*

Name these video games that have at least one, but not all, of these gameplay systems: **procedural generation**, **turn-based gameplay**, **grid-based movement**, and **permadeath**. 1 point for the name of the game, 1 point for each system the game has.

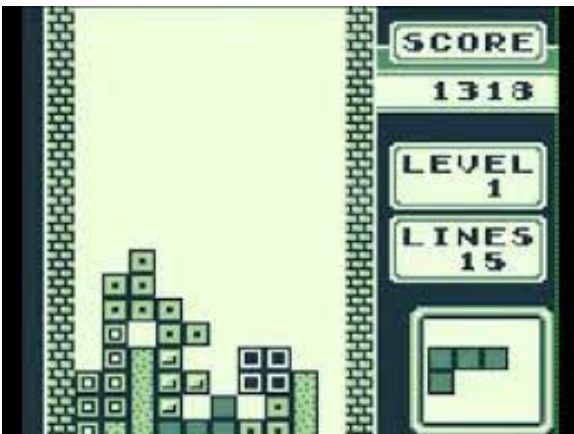
1.



2.



3.



4.



5.



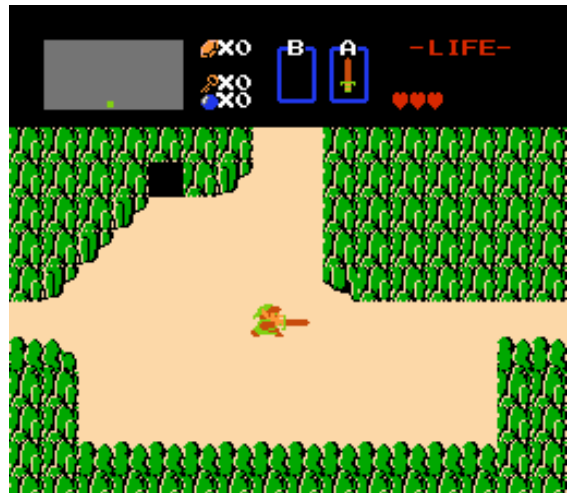
6.



7.



8.



Part 2: Rogues' Gallery

Name these fictional characters who are rogue-like. For a bonus point, name the source.

9.



10.





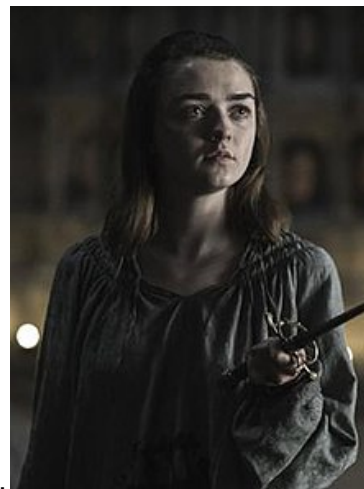
11.



12.



13.



14.



15.



16.

17.



18.



20.



19.



22.



21.



Part 3: Going Rogue

Answer these questions about rogues.

23. The Thief character class was introduced in the 1st edition of the tabletop roleplaying game *Advanced Dungeons & Dragons*. In what edition was the Thief class renamed to Rogue?
24. In 2017, Nissan released a special edition of the Nissan Rogue in which customers could, for a \$1990 upcharge, receive a certain collector's item with their vehicle tying in to a film of the same year. What was this collector's item?
25. And what 2017 film was this promotion a tie-in with?
26. Rogue Fitness is the primary equipment supplier for what fitness company's gyms?
27. What actress in the 2020 film *Rogue* allegedly gave a vial of her blood to Machine Gun Kelly?
28. A Rogues' Gallery is a police collection of mugshots and criminal pictures. What 1800s detective, whose agency uses an open eye logo with the caption "We Never Sleep", established the first one?
29. In comic books, a Rogues' Gallery refers to a super hero's cast of villains. Batman has probably the most recognizable Rogues' Gallery, with iconic faces such as The Joker, Poison Ivy, and Harley Quinn. According to the batman wiki, there are 12 more major villains in Batman's Rogues' Gallery – for 4 points, name them (1 point per 3 villains).
30. What super hero's Rogues' Gallery canonically teamed up and named themselves *Rogues*?
31. What city, situated in Rogue Valley, Oregon, hosts the Oregon Shakespeare Festival?
32. Finally, which former U.S. governor and Republican vice-presidential candidate wrote the 2009 memoir *Going Rogue: An American Life*?

Answers

1. Minecraft/ Procedural Generation
2. Pokemon (Red/Blue/Yellow)/ Tile movement, turn-based
3. Tetris/ Tile movement
4. Fire Emblem/ Permadeath, tile movement, turn-based
5. XCOM: Enemy Unknown/ Permadeath, tile movement, turn-based
6. No Man's Sky/ Procedural Generation
7. The Elder Scrolls 2: Daggerfall/ Procedural Generation
8. The Legend of Zelda/ Tile movement
9. Ezio/ Assassin's Creed
10. Rouge/ Sonic The Hedgehog
11. Captain Jack Sparrow/ Pirates of the Caribbean
12. Flynn Rider/ Tangled
13. Rayla/ The Dragon Prince
14. Arya Stark/ Game of Thrones
15. Black Widow/ The Avengers
16. Han Solo/ Star Wars

17. Bilbo Baggins/ The Hobbit
18. Agent 47/ Hitman
19. Robin Hood/ Robin Hood
20. Inigo Montoya/ The Princess Bride
21. Parker/ Leverage
22. Rogue/ X-Men

23. 3rd Edition (2nd edition AD&D is also ok)
24. Death Trooper Helmet
25. Rogue One: A Star Wars Story
26. Crossfit
27. Megan Fox
28. Alan Pinkerton
29. Bane, Clayface, Catwoman, Killer Croc, Mad Hatter, Man-Bat, Mr. Freeze, The Penguin, Ra's al Ghul, The Riddler, Scarecrow, Two-Face
30. The Flash
31. Ashland
32. Sarah Palin