

Hourly Bonus – Give My Regards to Broadway

1. By the Numbers

The following refer to significant numbers from Broadway songs. Identify to what the numbers refer, the song name, and the musical:

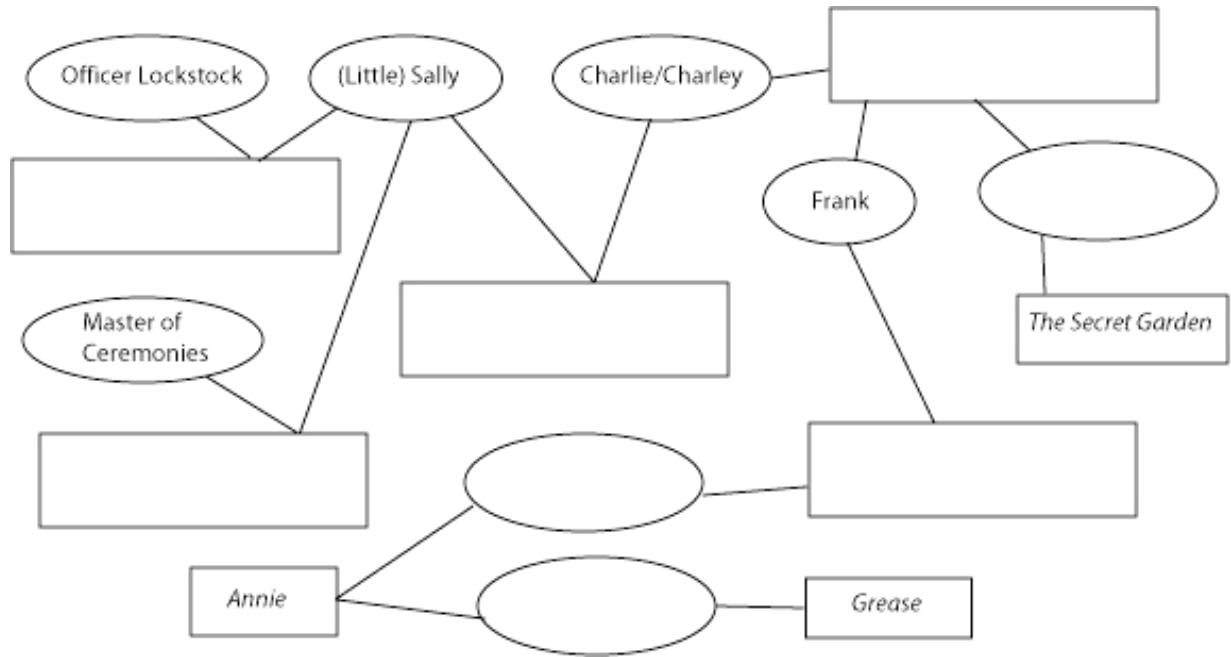
- A. 76
- B. 525,600
- C. 16, 17
- D. 1,1
- E. 24601
- F. 7 ½

2. Characterization

1. Name the musical to which each set of characters belongs:

- 3. Jack, Wolf, Cinderella
- 4. Mimi, Mark
- 5. John Wilkes Booth, Lee Harvey Oswald
- 6. Curly, Laurey
- 7. Eliza, Henry
- 8. Bet, Bill, Nancy
- 9. Chip, Marcy
- 10. Janet, Brad
- 11. Tony, A-rab
- 12. John Adams, Thomas Jefferson
- 13. Grizabella, Bustopher Jones
- 14. Tommy, Fiona
- 15. Nathan, Miss Adelaide

- 1. Complete the Name Web by filling the blank circles with character names and the blank rectangles with musical names.



3. Hitting the Books

1. Name the musical inspired by the work of each author:

- A. Victor Hugo
- B. Charles Schultz
- C. Puccini's *La Boheme*:
- D. Puccini's *Madame Butterfly*
- E. Shakespeare's *The Comedy of Errors*
- F. Shakespeare's *Romeo & Juliet*
- G. Frances Hodgson Burnett
- H. Gregory Maguire
- I. Lynn Riggs' *Green Grow the Lilacs*
- J. E.L. Doctorow
- K. Mark Twain
- L. T.S. Eliot
- M. Sholom Aleichem
- N. Voltaire
- O. Damon Runyon
- P. Miguel de Cervantes
- Q. Hans Christian Anderson's *Princess and the Pea*

2. Name as many musicals as you can that are based off of the Bible.

4. Phony Headlines

Identify the musical described by each "newspaper headline":

1. "Barber-Baker Duo Serves Everyone!"
2. "That's a Lot of Trains"
3. "It's a Flop! It's a Hit?"
4. "Paperboys on Strike"
5. "Tough Life at Girls Orphanage"
6. "Tough Life at Boys Orphanage"
7. "Rainbow Cloak Greatest Thing Since Paschal Sacrifices!"
8. "New Baseball Recruit is Devilishly Good"
9. "Horticulture Gone Horribly Wrong"
10. "With Tresses, the Bigger the Better"

5. Stephen Sondheim

1. Name Sondheim's alma mater and year of graduation:
2. While in college, he was a member of a theater group that still exists today, although now it is slightly modified, including the addition of a 10 freshmen limit. What is the group?
3. What two plays did he write in college?
4. Sondheim was mentored by which other notable Broadway songwriter?
5. In *Into the Woods*, what do the Baker and his wife want?
What must they produce before the last midnight in order to acquire it?
Why is Rapunzel's contribution no good, and what ends up being used instead?
6. Why was the 2001 Broadway Premier of *Assassins* postponed?
What carnival game does the Proprietor urge the assassins to try?
What is the connection between Sara Jane Moore and Lynette "Squeaky" Fromme?

7. What is unique about the pit orchestra of the current Broadway production of *Sweeney Todd*?

How do Anthony and Sweeney agree and differ in their opinions of London?

6. Geography (see attached map)

The numbered locations feature prominently in musicals—either through songs or setting. Identify the musical associated with each location:

- 1.
- 2.
- 3.
- 4.
- 5.
- 6.
- 7.
- 8.
- 9.
- 10.
- 11.
- 12.
- 13.
- 14.
- 15.
- 16.
- 17.
- 18.
- 19.
- 20.

7. Playbills (see attached sheet)

Identify the musical corresponding to each playbill.

- 1.
- 2.
- 3.
- 4.
- 5.
- 6.
- 7.
- 8.
- 9.
- 10.
- 11.
- 12.
- 13.
- 14.
- 15.
- 16.

8. Now, For Some Music:

Identify the songs and their corresponding musicals:

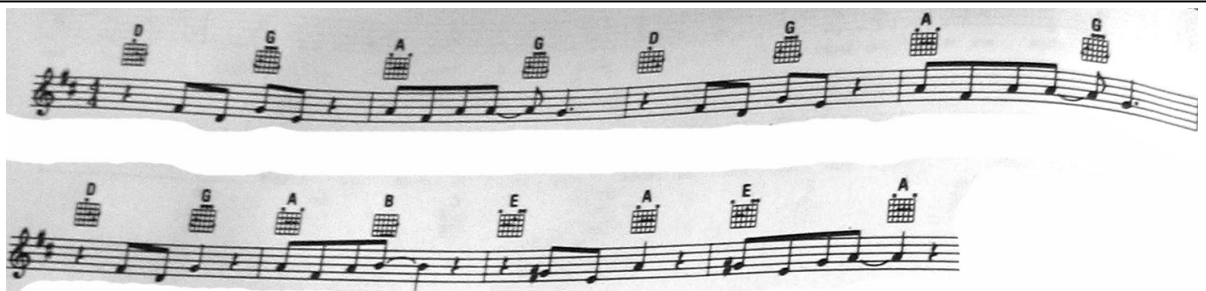
1.



2.



3.



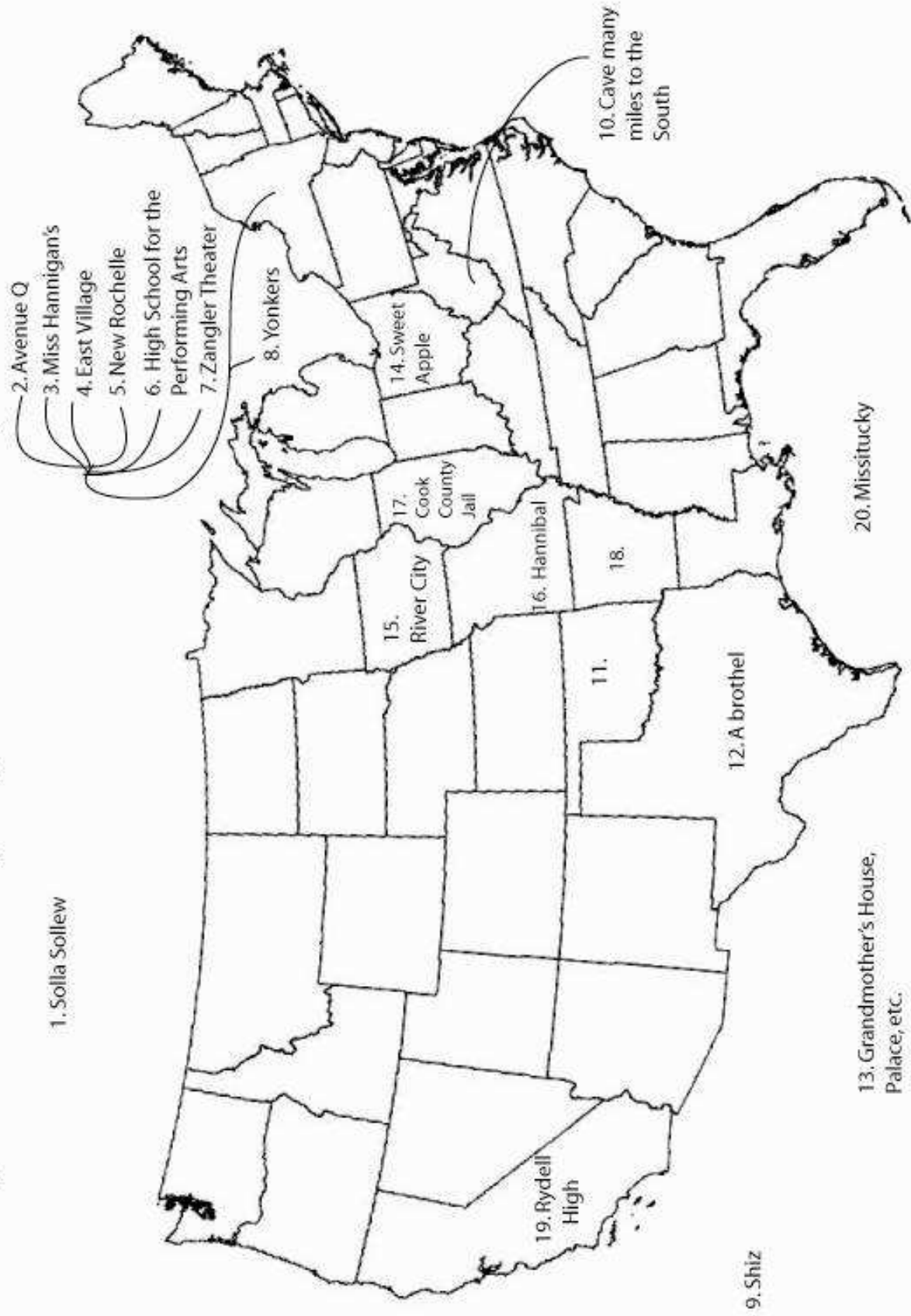
4.



5.



Hourly Bonus: "Give My Regards to Broadway." GEOGRAPHY



Give My Regards to Broadway: Playbills. (Identify each musical)

1.



2.



3.



4.



5.



6.



7.



8.



13.

14

15

16.