

ANIMATION

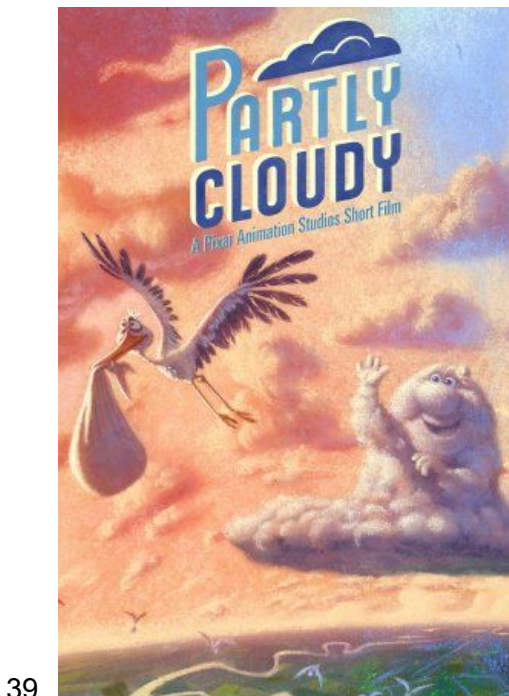
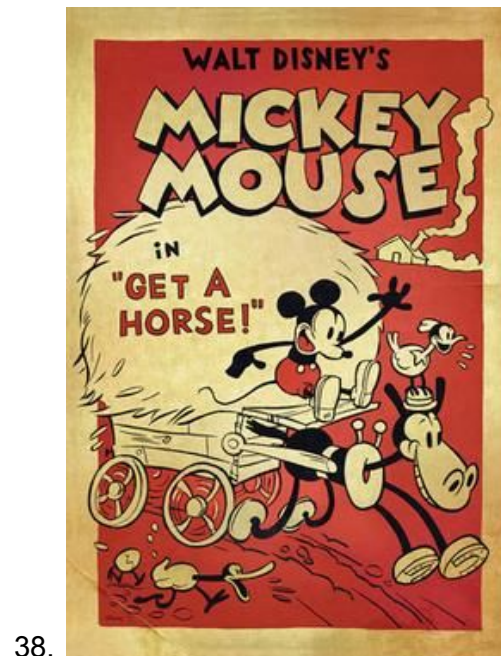
Part I - Cartoon Families: Name the cartoon/anime with the following family members

1. Eliza, Donnie, Debbie, Nigel, Marianne, and Darwin
2. Bob, Linda, Tina, Gene, and Louise
3. Penny, BeBe, CeCe, Trudy, Oscar, and Suga Mama
4. Lori, Leni, Luna, Luan, Lynn, Lucy, Lana, Loloa, Lisa, Lilly, and Lincoln
5. Stan, Francine, Steve, Hayley, Roger, and Klaus
6. George, Jane, Judy, Elroy, and Astro
7. Huey, Riley, and Grandad
8. Hank, Peggy, Bobby, and Luanne
9. Edward, Alphonse, Hohenheim, Trisha
10. Osomatsu, Karamatsu, Choromatsu, Ichimatsu, Jyushimatsu, Todomatsu, Matsuzou, Matsuyo
11. Mother, Souichirou, Yajirou, Yaichirou, Yasaburou, Yashirou

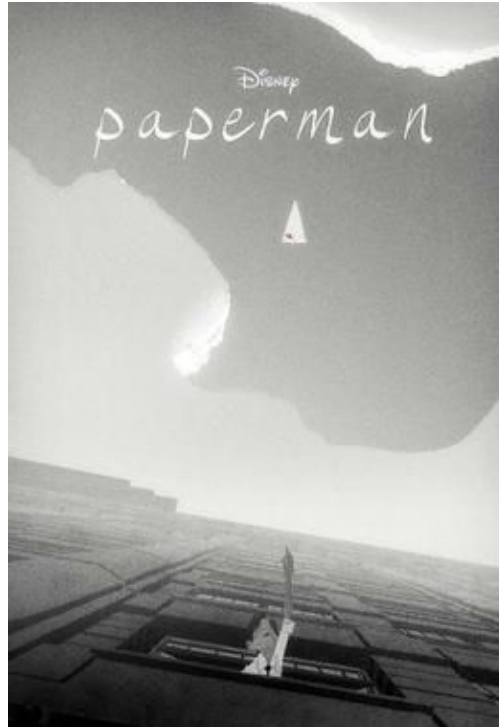
Part II - Cartoon Theme Songs: Name the cartoon or anime from its theme song

<https://drive.google.com/open?id=0B23K5M6R6m8KdDJKVnY5MGJZeFU>

Part III - The Long and Short: Given the poster for an animated short, name the Disney/Pixar feature film it aired alongside



40.



41.

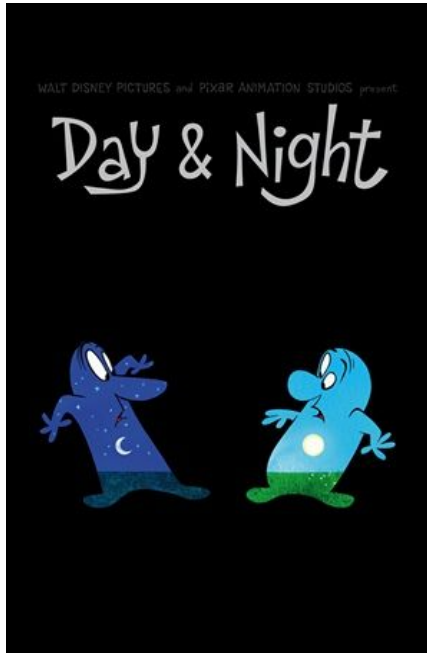




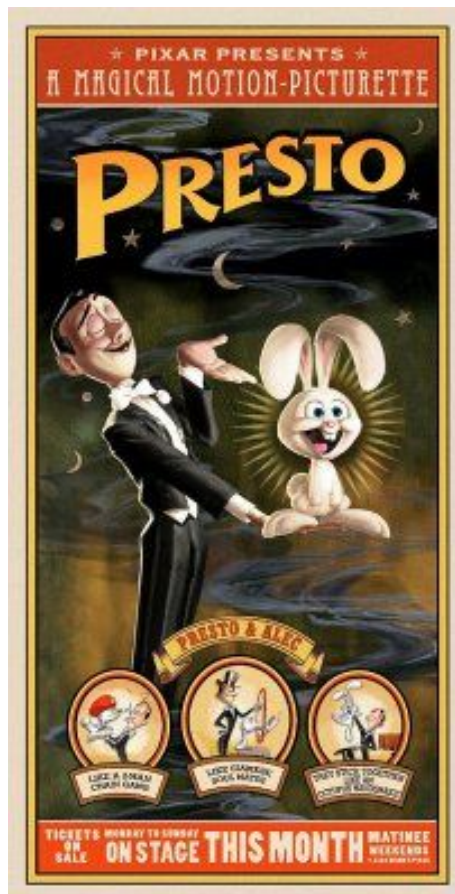
42.



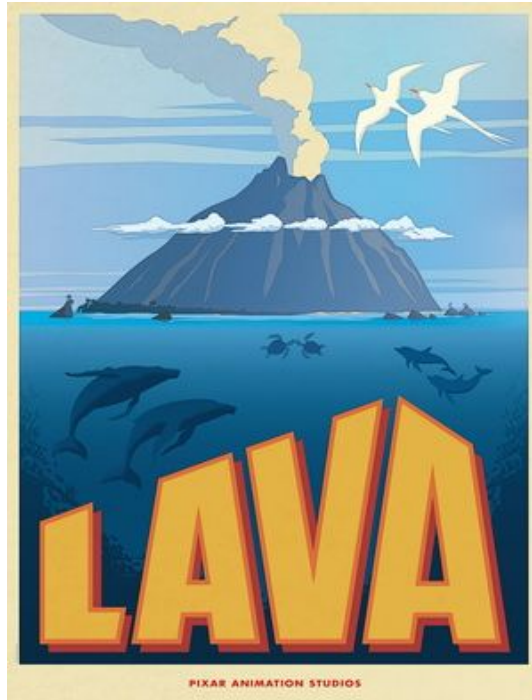
43.



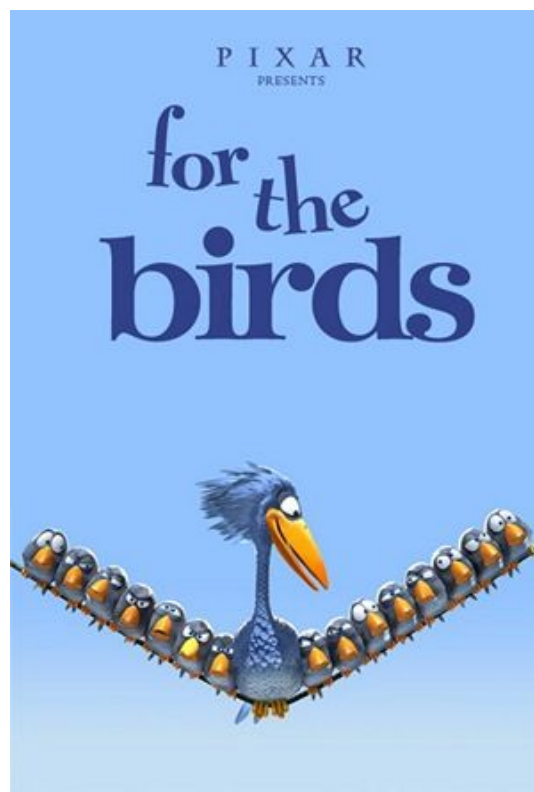
44.



45.



46.



47.



48.

Part IV - Disney Lightning Round: Name the first five full length entirely animated Disney films in order (Question 49 - 53) and the five most recent Disney animation studio films in order starting with the most recent (Question 54-58)

Part V - And The Award Goes To...: Fill in the missing info about Academy Award for Best Animated Feature Winners

Film	Studio	Year
59. ???	Disney	2016
Shrek	Dreamworks	60. ???
61. ???	Aardman Animations	2005
Rango	62. ???	2011
Happy Feet	63. ???	2006
64. ???	Disney	2014
65. ???	Pixar	2007
Spirited Away	Studio Ghibli	66. ???