

Fictional Geography Table of Contents

Section 1: Maps with Gaps!	2
Section 2: Maps and Matches	16
Section 3: 20 Questions	26
Section 4: Maps from Video Games	28
Section 5: Video Game Locations by Image	32
Section 6: Movie Locations by Image	34
Section 7: Famous Locations in TV Shows	36

Section 1: Maps with Gaps!

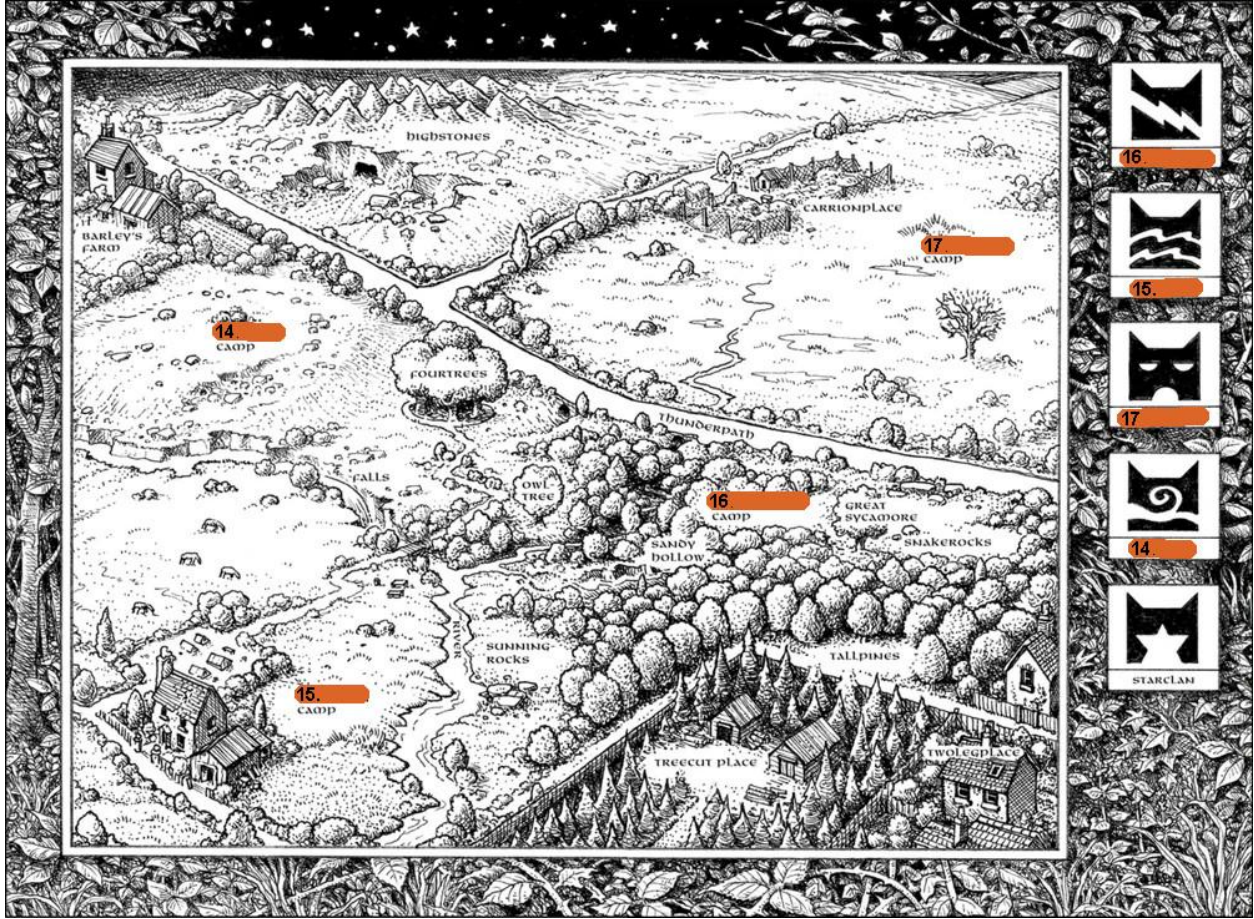
Fill in the missing areas in the provided maps. Areas covered in **Blue** are realm/world names and areas covered in **White** or **Orange** are location names.





4. The Realm of...

Miles
50 100 150 200





s. morgenstern's
classic tale
of
true love and
high adventure!

18.

the good parts version
abridged by
william
goldman
author of "bitch cassidy
and the sundance kid"



19.

20.

群雄四分

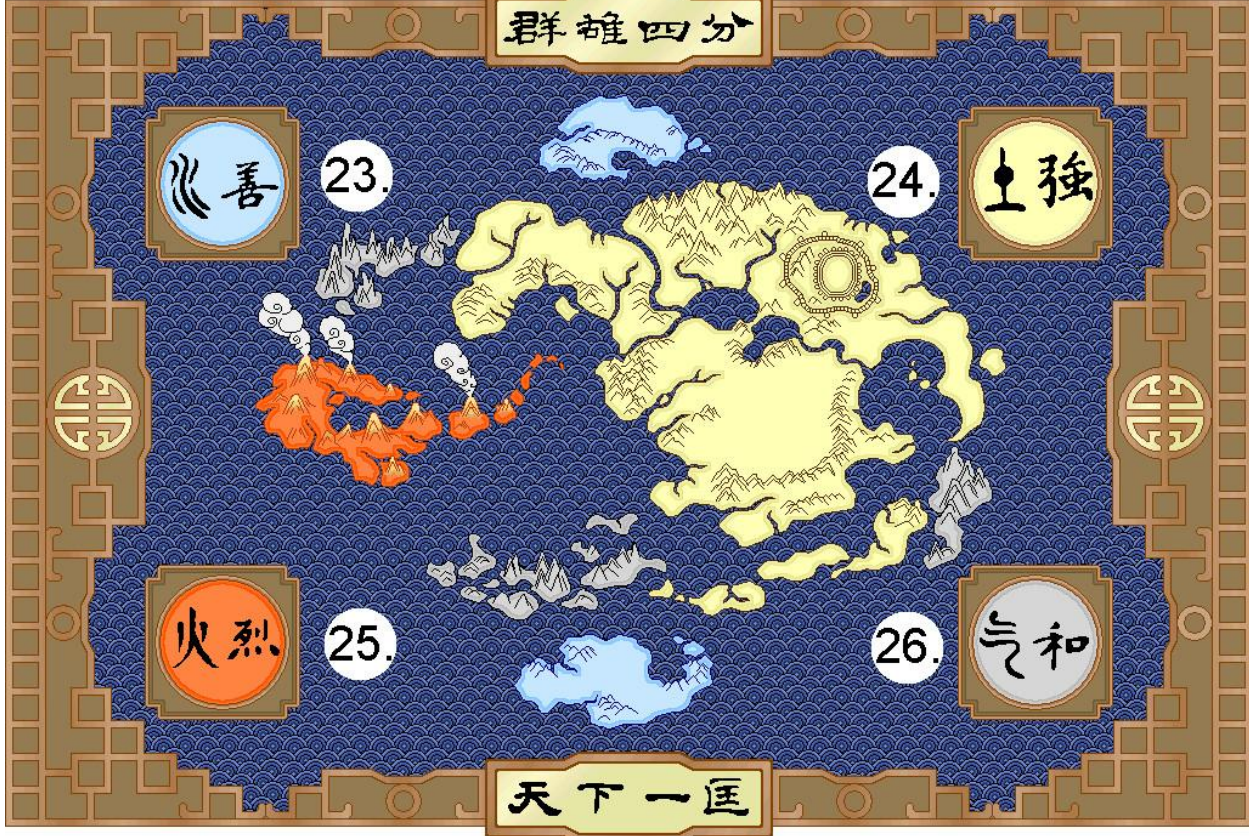
☵ 善 23.

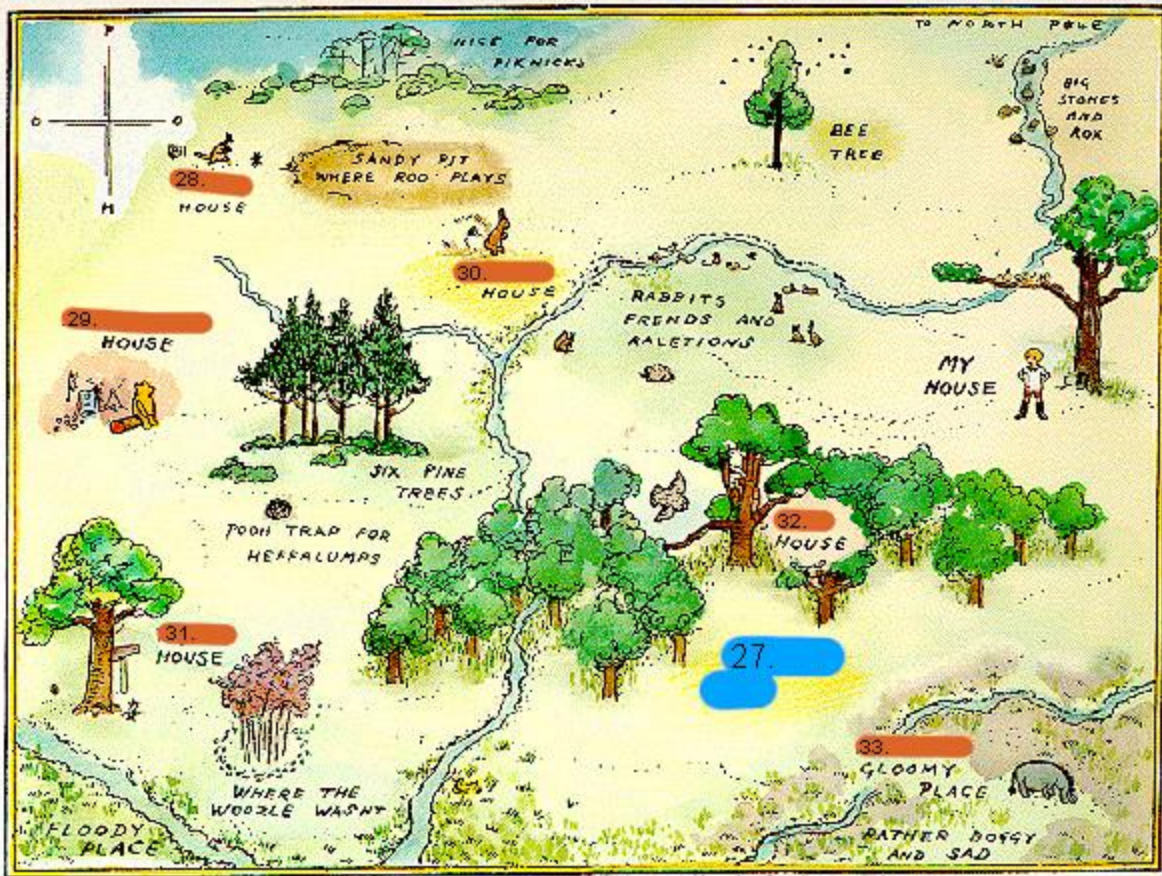
☷ 強 24.

☲ 火烈 25.

☱ 气和 26.

天下一匡

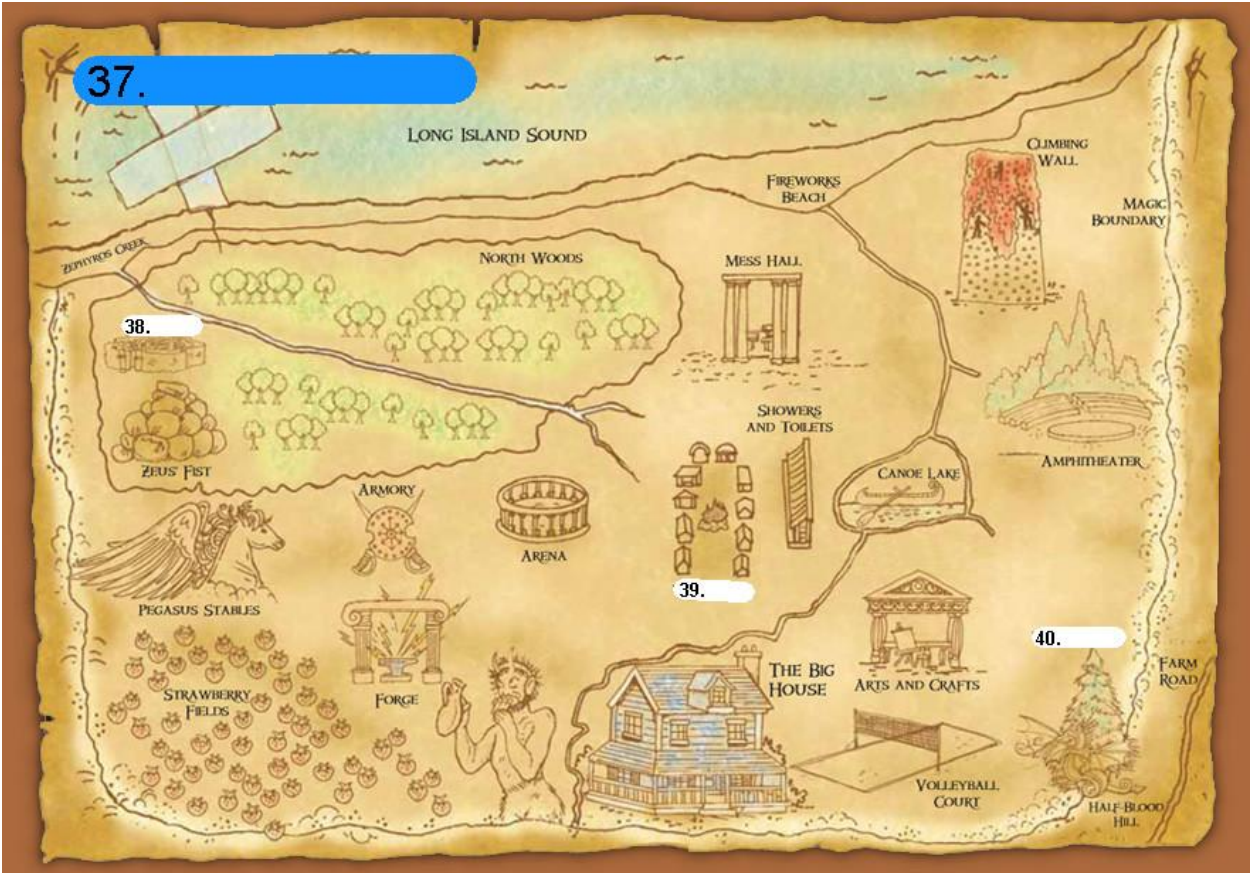




DRAWN BY ME AND MR SHEPARD HELPD



37.



38.

39.

40.





Section 2: Maps and Matches

Identify the source material from which each of the following maps comes.

53.



ISLA NUBLAR

Your bracelet scanner allows you VIP access to ALL rides and attractions throughout the Park. Scanner kiosks are located at all stations. Please abide by all safety warnings and instructions on posted signs throughout the park. Proper attire - including shoes and shirts - must be worn at all times. We are eager to make your Isla Nublar Experience as exciting and memorable as possible. If you have any questions or concerns, please contact Guest Relations or speak with any one of our Isla Guides.

Isla Nublar is a Non-Smoking/ Clean Air Environment

PLEASE NOTE:
Certain rides and attractions have restrictions. See details at ride entrance. Some may be too intense for young children.

Please abide by all safety warnings and instructions on posted signs throughout the park. Proper attire - including shoes and shirts - must be worn at all times. We are eager to make your Isla Nublar Experience as fully exciting and memorable as possible. If you have any questions or concerns, please contact Guest Relations or speak with any one of our Isla Guides.

MONORAIL STATION

PARK HIGHLIGHTS

- TRICERATOPS TERRITORY
- T-REX KINGDOM
- MOSASAURUS FEEDING SHOW
- GALLIMIMUS VALLEY
- CRETACEOUS CRUISE
- PACHY ARENA
- INNOVATION CENTER
- CREATION LAB
- UNDERWATER OBSERVATORY
- THE AVIARY
- THE SCRAMBLER
- BAMBOO FOREST
- GYROSPHERE
- GOLF COURSE
- BOTANICAL GARDENS
- GENTLE GIANTS PETTING ZOO
- WATER PARK
- GONDOLA LIFT

TOURIST REGIONS

RIDES / ATTRACTIONS

DINO SHOWS

SCANNER KIOSKS

MONORAIL STATION

FERRY LANDING

HOTEL COMPLEX

DINING

INFORMATION

CHILD CARE

CALL CENTER

RESTROOM

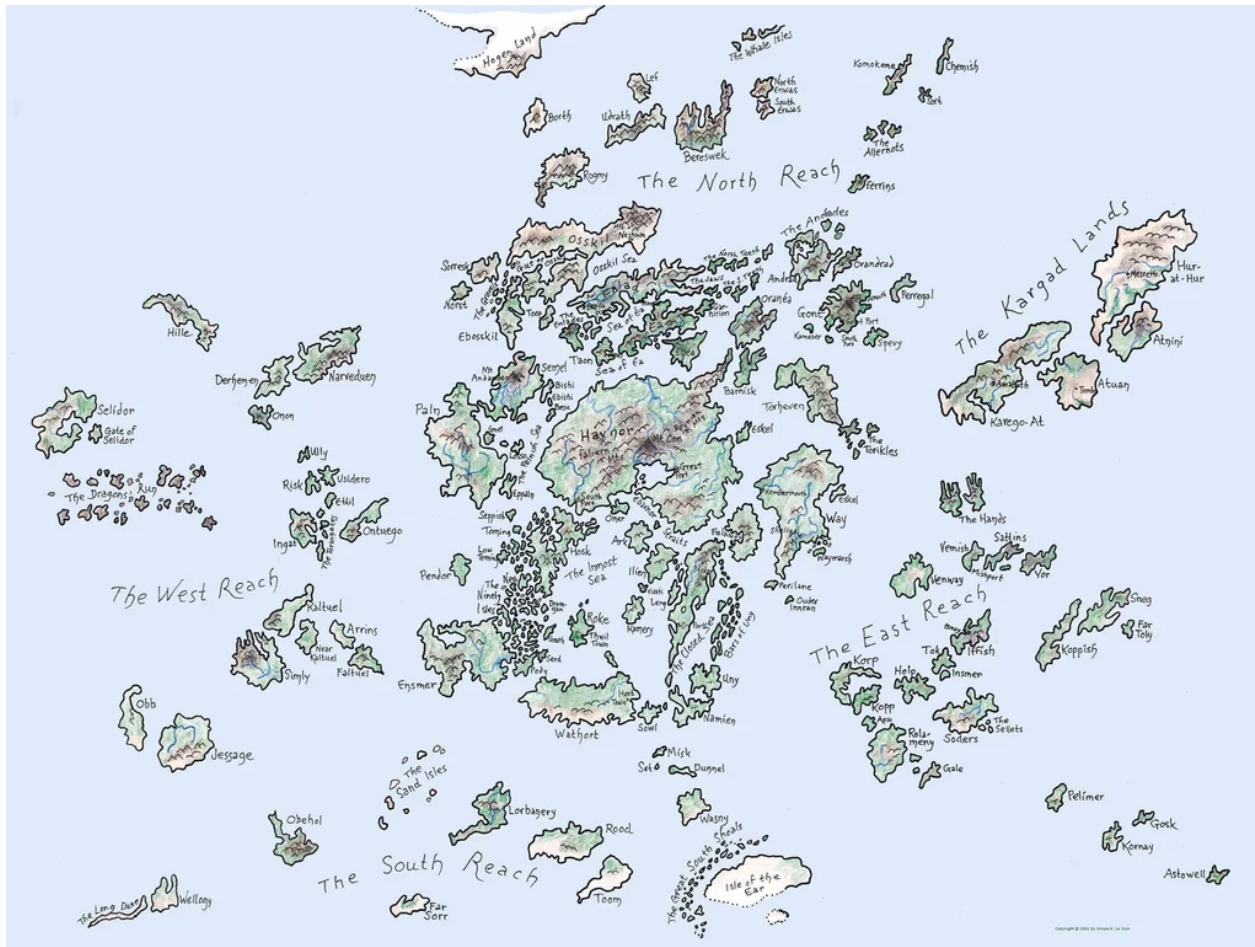
MEDICAL

RECYCLING

PARK KEY

55.



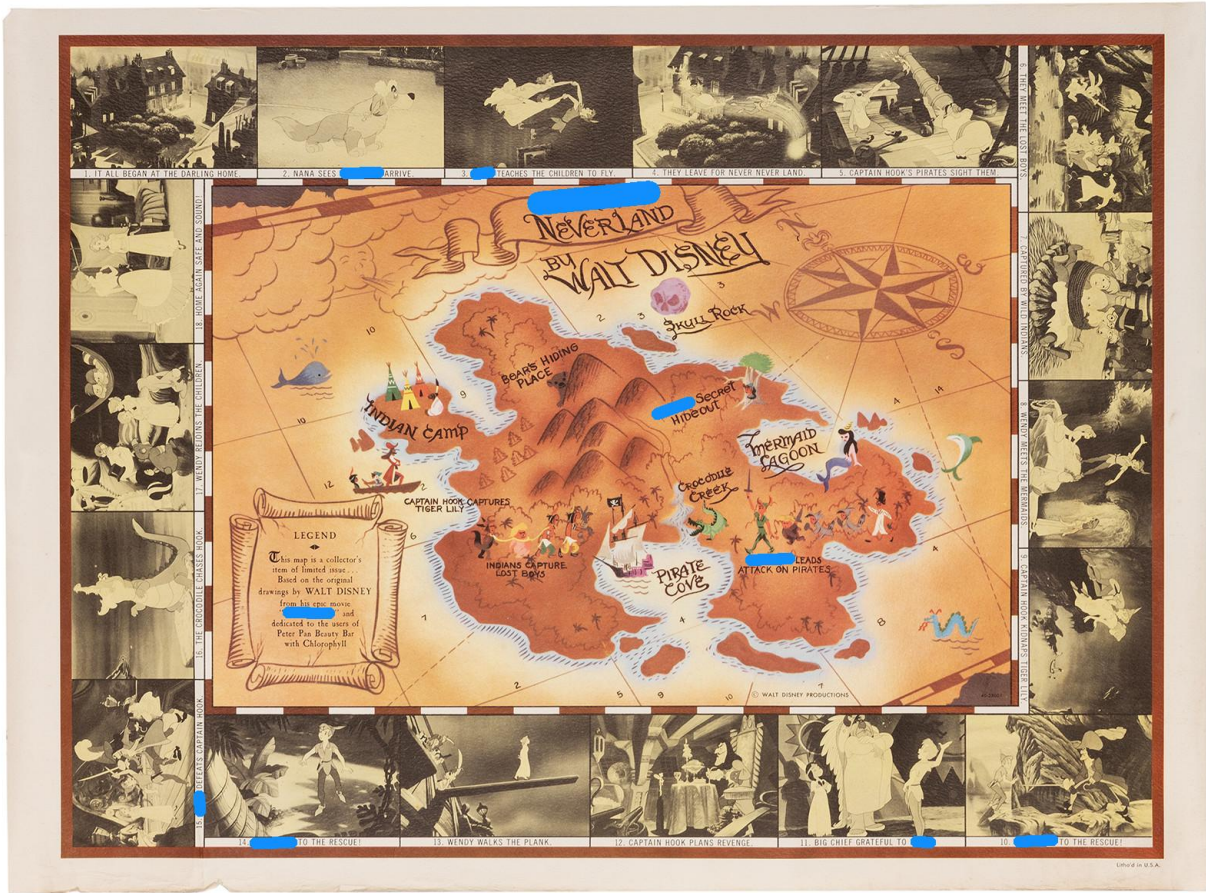


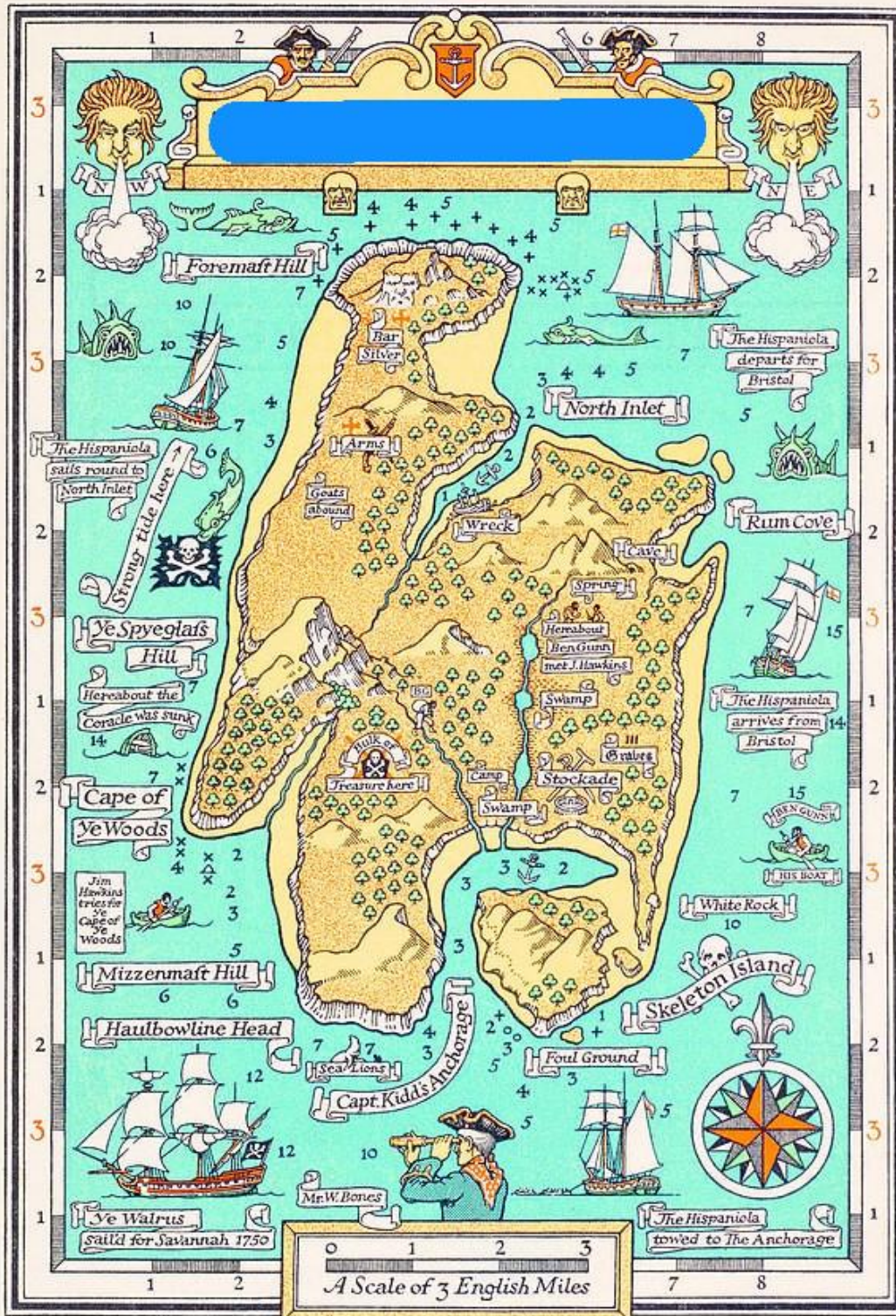


Settlement of the Swiss Pater and his Family in the Desert Island.

A. Arcadia.
 B. Sugar-Canes.
 C. Cabbage Palm Wood.
 D. Gourd Wood.
 E. Bamboos.
 F. Pass—Drawbridge.
 G. Acorn Wood.
 H. Rice Marsh.
 I. Monkey Wood.
 K. The Farm.
 L. Lake.

M. Cotton Wood.
 N. Flamingo Marsh.
 O. Cascade.
 P. Falcon's Nest.
 Q. Palm Cocoa Wood.
 R. Family Ridge.
 S. Potatoe Plantation.
 T. Tent House.
 U. Grotto.
 V. Marsh.
 W. Shark's Island.





62.



Section 3: 20 Questions

Answer the following questions about geographical locations in works of fiction.

63. In JM Barrie's *Peter Pan*, there is a magical place called Never Neverland. In the Disney adaptation, instructions are provided to navigate to this island. How does one get to Never Neverland from Earth (i.e. what are the directions)?
64. On the trip to Mordor, the Fellowship of the Ring consider taking two routes through the Misty Mountains. When the first route fails, they decide to go through which cursed location?
65. Which of the following is not an official pokemon region? Alola, Fiore, Tunod, Hisui, Kalos.
66. In *The Lion, the Witch and the Wardrobe*, the titular wardrobe serves as a portal to Narnia. In subsequent books in the series, several other such portals are opened between worlds. Name one of them.
67. In *Monty Python and the Holy Grail*, the questers must cross the Bridge of Death to reach the Grail castle. How many questions does the bridge keeper ask each knight errant?
68. King Arthur's most famously held court in the fictional castle Camelot. There is another very real castle in Cornwall which is closely associated with the mythical king. What is the castle called?
69. How many worlds must Mario travel through to reach Bowser in the original *Super Mario Bros*?
70. What is the name of the fictional Himalayan monastery where Doctor Strange learned to harness his powers?
71. Which Tatooine city is described as a "wretched hive of scum and villainy"?
72. In which fictional city could you at one point find the following shops: David's Used Cans, Priest's Homes, Ronde's Barber, and Ricky Williams Herbal Remedies?
73. In LEGO *Bionicle*, what is the name of the island city which was the original home of the Matoran?
74. In *Percy Jackson and the Olympians*, where can one find Mount Olympus?
75. In what region of the present-day USA would one find the Capitol district of Panem in *The Hunger Games* trilogy?

76. What are the nicknames of the four marauders who wrote the Marauder's Map in *Harry Potter*?
77. In what real-world country does the fictional "encanto" exist in the Disney film *Encanto*?
78. In the *Spongebob Squarepants Movie*, where do Spongebob and Patrick find King Neptune's crown (and meet David Hasselhoff)?
79. In the Dr. Seuss canon universe, there is a small town called Whoville which can be found on a speck of dust. In which two books can you find Whoville?
80. In *Alice in Wonderland*, Alice stumbles upon a mad tea party during her journeys. At whose home did this tea party take place?
81. In 1666, Margaret Cavendish wrote a story many consider to be the forerunner to modern science fiction. A 2021 horror film was loosely based on this story, named for the fictional world in which it takes place. What is the name of that fictional world?
82. Not to be confused with the Land of Oz, the Land of Ooo is a whimsical land that was destroyed by the great mushroom war 1000 years before the start of what cartoon network show?

Section 4: Maps from Video Games

Identify the following video games from in-game maps.

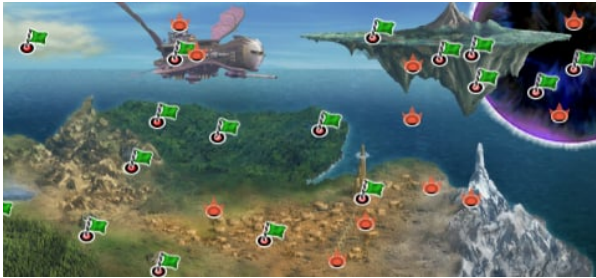
83.



84.



85.



86.



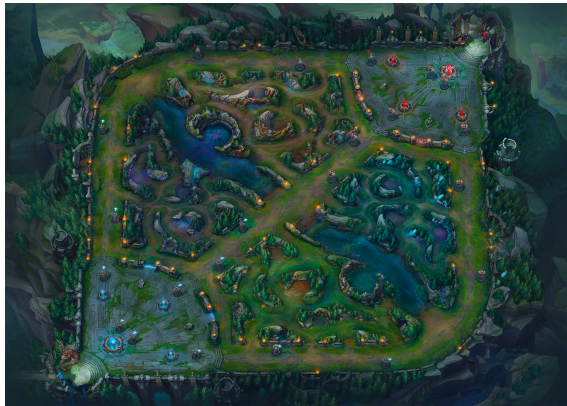
91.



92.



93.



94.



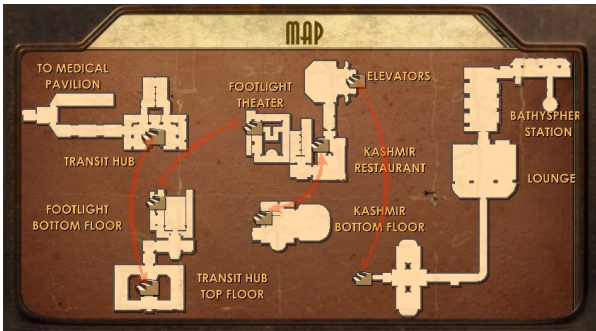
95.



96.



97.



Section 5: Video Game Locations by Image

Identify the following iconic locations from video games (we need more than just the name of the game).

98.



99.



100.



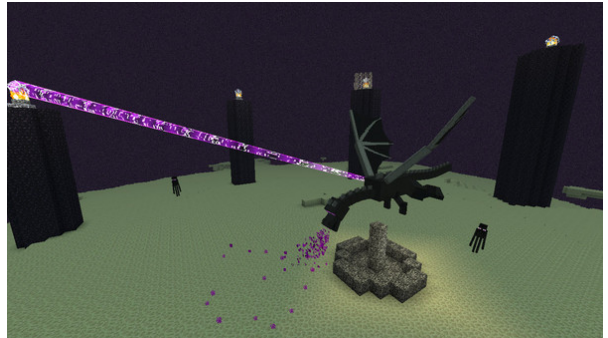
101.



102.



103.



104.



105.



106.



107.



108.



Section 6: Movie Locations by Image

Identify the following iconic locations from movies (we need more than just the name of the movie).

109.



110.



111.



112.



113.



114.



115.



116.



117.



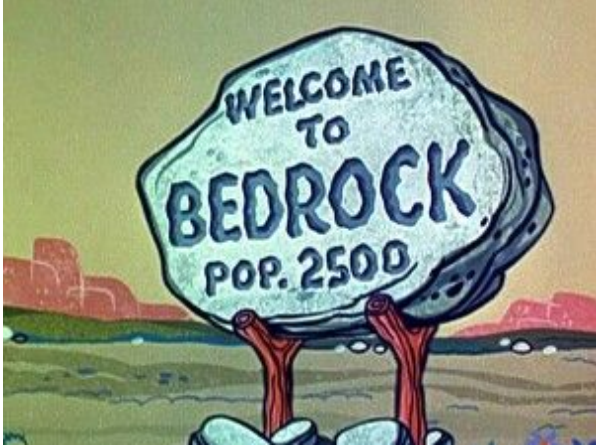
118.



Section 7: TV Shows by Town Sign

Identify the following television shows from the images of the town signs.

119.



120.



121.



122.



123.



124.



125.



126.



127.



128.

