



# Lehman Hall



## Rooms

Singles: 32

Doubles: 0

Walk-through Doubles : 0

## Public Spaces

Kitchen

Living Room

2 Public bathrooms

## Laundry

2 Washers

2 Dryers

## Communications

Cable: 1 jack per room

Phone: 1 line per room

Ethernet: 1 jack per bed

## Disability Accommodations

Partial access--restroom,  
social space

## Other Features

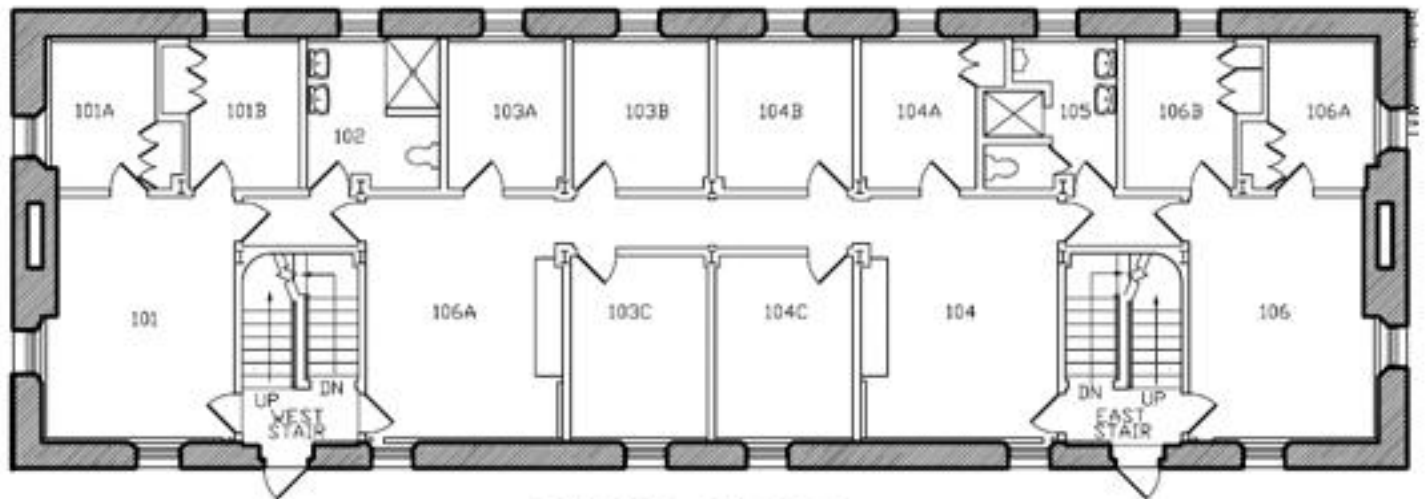
- \* Foosball table
- \* TV with cable & DVD player
- \* Grill outside
- \* Near Dodd, Mission, and Paresky dining halls
- \* Center of campus – close to Paresky, Sawyer, North and South academic buildings, Music building
- \*

Lehman Hall, named after Herbert H. Lehman, Class 1899, is a former first year building, but now houses upper-class students who belong to the Dodd Neighborhood. Featuring a bronze plate of Lehman himself on the southeast corner of the building, the hall consists of two entries that are "glued together" in the middle, where there is a shared common room with TV and a foosball table. Rooms are arranged mostly in suites, and have fireplaces with no flame or flu, built-in cabinetry, and nearby bathrooms. It's small and quiet, but close to most everything on campus, including Spencer, the Library, and Dodd Dining Room.

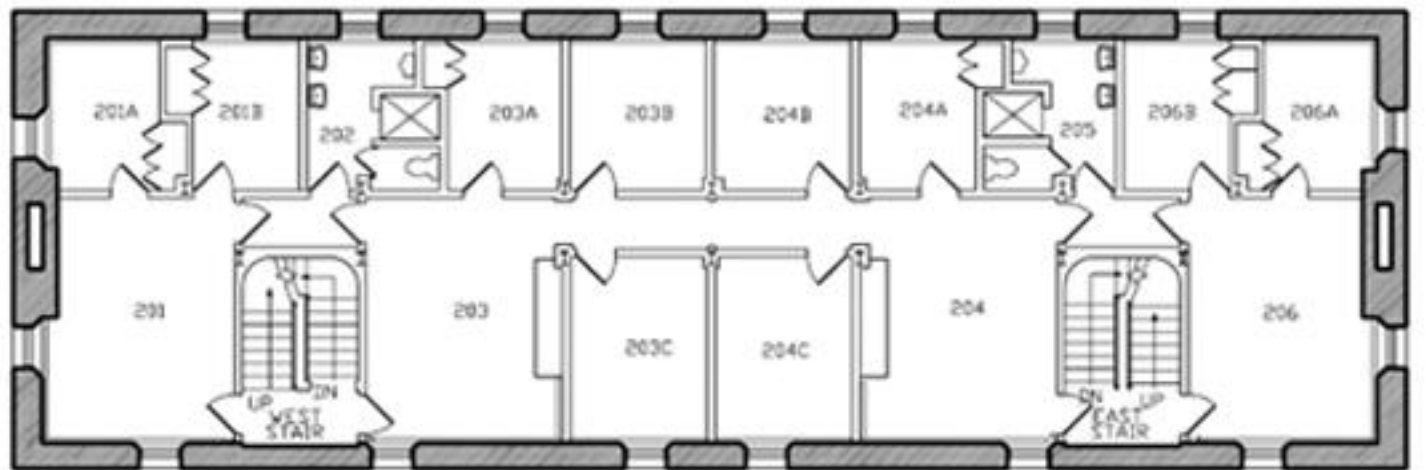
\* Indicates that the rooms have been identified to be noisy due to external house related noises. Please see the room sheets for the specific source of noise.

No Doubles

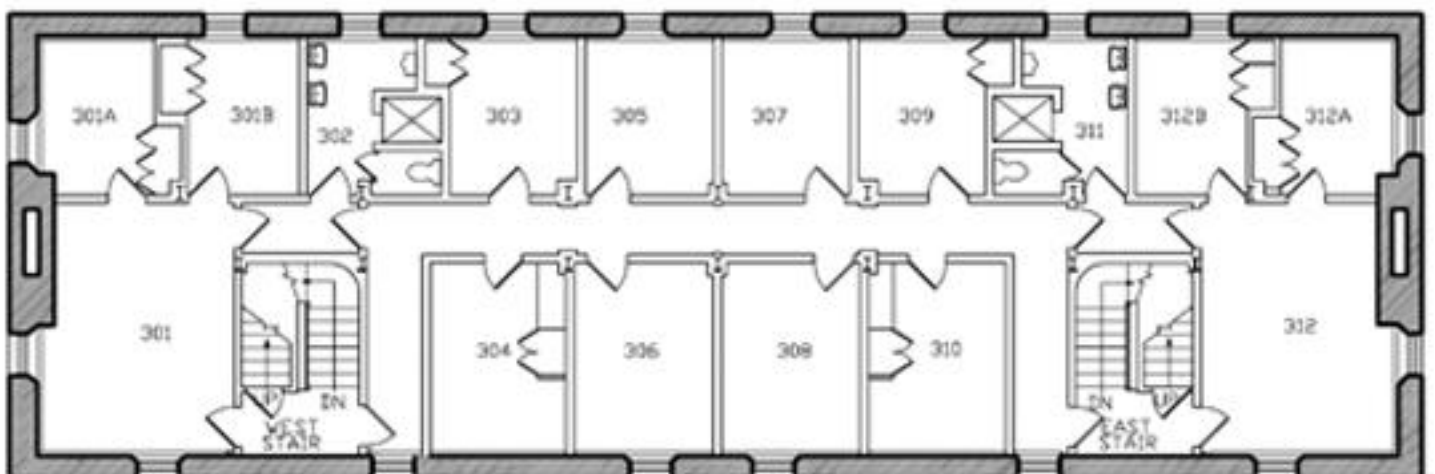
Basement common space floor plan not available.



FIRST FLOOR



SECOND FLOOR



THIRD FLOOR



# Lehman

(Single)

## Basic Facts

*Floor:* Carpeted

*Furniture included:*

- Bed (Lofted)
- Desk
- Dresser (Drawers Only)
- Chair
- Bookcase

*Adjustable Bed Height:* Yes

*Closet:* Either Closet or Bureau

*White Board on door:* No

*Slanted Ceilings:* No

## Light

*Number of Windows:* 1

*Plenty of natural light:* Yes on the side of the building facing Route 2, no on the side facing Mission

*Time of day with most light:* Don't notice

*Without additional light, the room is well lit:* No, the lofted bed shadows the desk and the rest of the floor.

## Temperature

*Room Temperature:* Hot

*Ability to adjust heat:* There is no way to adjust the heat

## Unique Quirks

There is a lofted bed over the large desk. You can successfully unbunk the bed if you don't mind being able to open only one door of the bureau/closet. The room is small, but the common room makes up for it.



## Bathroom

People who share the bathroom: 4-5

Sinks: 1

Toilets: 1

Urinals : 1

Bathtubs: 1 shower

Windows: 1 window