

Dodd

201 (Single)

Basic Facts

Floor: Carpeted

Furniture included:

- Bed
- Desk
- Dresser (Drawers only)
- Chair
- Bookcase
- Mirror

Adjustable Bed Height: Yes

Closet: Yes

It is a walk-in closet with two shelves, three hooks, a pole for hanging items on, and even a window.

White Board on door: Yes

Slanted Ceilings: No

Light

Number of Windows: 3

Plenty of natural light: Yes

Unfortunately, it also gets a lot of light at night from the street...

Time of day with most light: Don't notice

Without additional light, the room is well lit: No

Additional Comments: The closet is dark

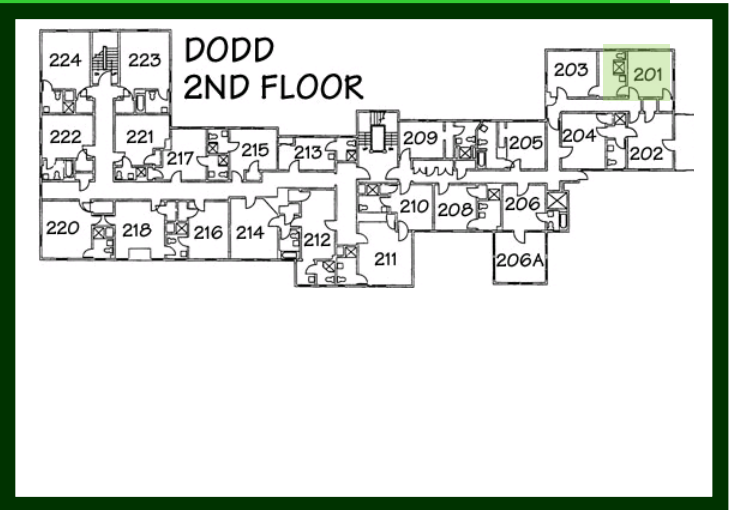
Temperature

Room Temperature: Hot

Ability to adjust heat: Yes, there is a thermostat not that it really helps...

Unique Quirks

This room is great! The bathroom is shared with another single, which makes it wonderful if you picked in with just one other person. The closet is nice and the room has a nice, quiet location within Dodd House. It is very spacious, leaving a lot of room open for any furniture that you want to bring



Bathroom

People who share the bathroom: 1

Sinks: 1

Toilets: 1

Bathtubs: Shower

Windows: 1 window

Other comments:

Dodd

204 (Single)

Basic Facts

Floor: Carpeted

Furniture included:

- Bed
- Desk
- Dresser (Drawers only)
- Chair
- Bookcase

Adjustable Bed Height: No

Closet: Yes

Very small, with a single shelf on top of the hanging area.

White Board on door: Yes

Slanted Ceilings: No

Light

Number of Windows: 2

Plenty of natural light: Yes

Time of day with most light: Morning

Without additional light, the room is well lit: No

Additional Comments: The natural light through the windows is adequate but not enough to fully illuminate the room.

Temperature

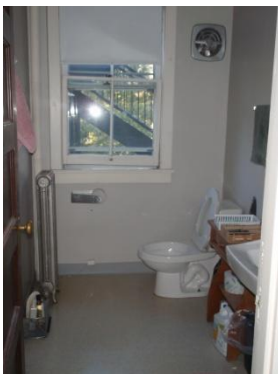
Room Temperature: Hot

Even with the thermostat on the lowest setting, sometimes I have to open the window in the winter in order to bring the temperature in the room down to an acceptable level.

Ability to adjust heat: Yes, there is a thermostat

Unique Quirks

Shared private bathroom with another room, can go out onto the fire escape through the window.



Bathroom

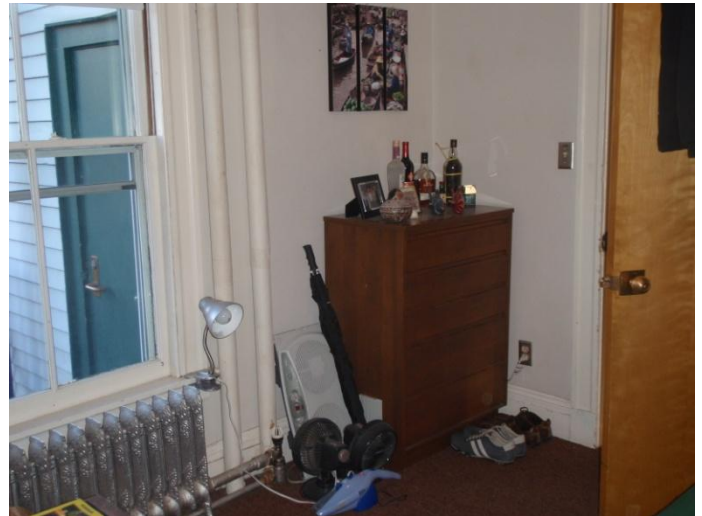
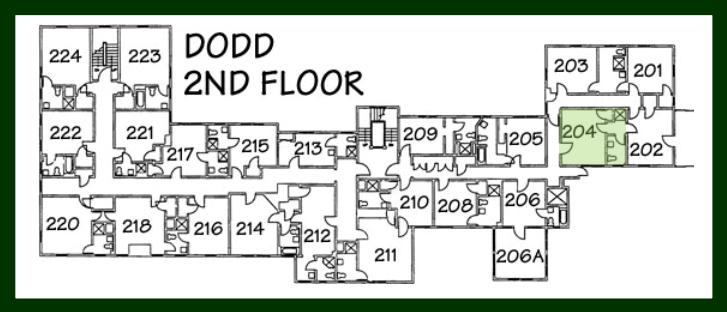
People who share the bathroom: 1

Sinks: 1

Toilets: 1

Bathtubs: Shower

Windows: 1 window



Dodd

205 (Single)

Basic Facts

Floor: Exposed (hardwood or tile)

Furniture included:

- Bed
- Desk
- Dresser (Drawers only)
- Chair
- Bookcase

Adjustable Bed Height: Yes

Closet: Yes

It's relatively small, but there are three shelves on both sides.

White Board on door: Yes

Slanted Ceilings: No

Light

Number of Windows: 3

Plenty of natural light: Yes

It faces the front of the building.

Time of day with most light: Morning

Without additional light, the room is well lit: Yes

Additional Comments:

Temperature

Room Temperature: Hot

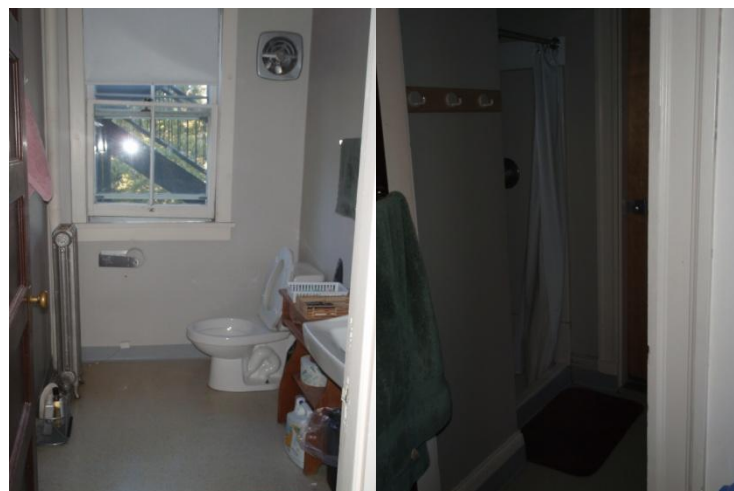
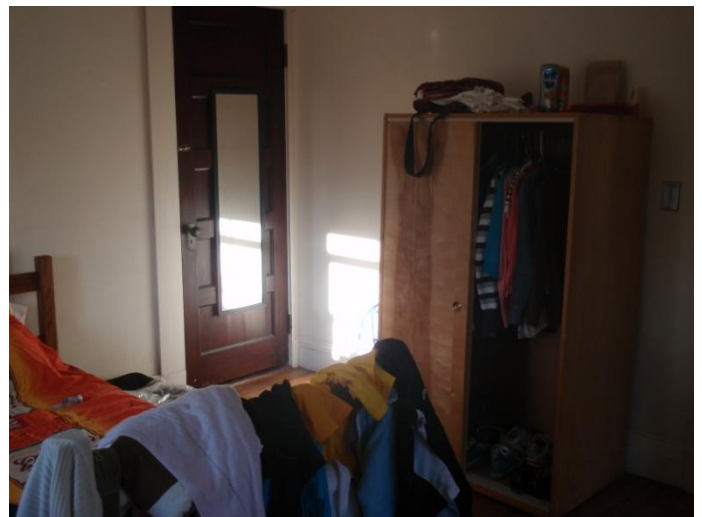
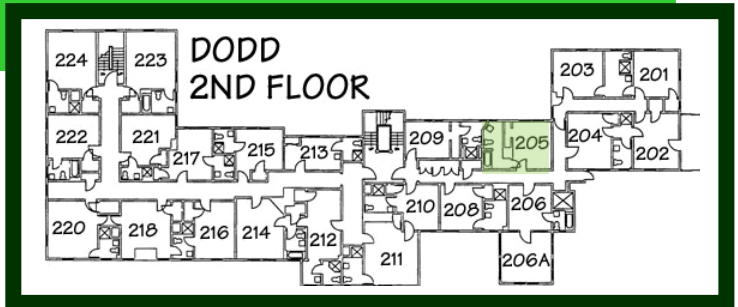
The heater is out of control.

Ability to adjust heat: Yes, there is a thermostat

Well, there is a radiator, but there is no way to make it make the room warm; it's either really hot, or the heater is off.

Unique Quirks

The bathroom is very large.



Bathroom

People who share the bathroom: 0 (private bathroom)

Sinks: 1

Toilets: 1

Bathtubs: Bathtub with showerhead

Windows: 1 window

Other comments: It's the most perfect bathroom one could ask for as a student living in a dorm.

Dodd 206 (Walk-through Double)

Basic Facts

Floor: Carpeted

Furniture included:

- Bed
- Desk
- Dresser (Drawers only)
- Chair
- Bookcase

Adjustable Bed Height: Yes

Closet: Yes

It is a small-medium sized closet with a mirror on one of the sliding doors. It has room to hang clothing as well as about 3 or 4 hooks on the inside and outside of it. The top of the closet is good for stacking things.

White Board on door: Yes

Slanted Ceilings: No

Light

Number of Windows: 6

Plenty of natural light: Yes

Since it is a walk-through double, you get the natural light from the back bedroom which has all the windows. The front bedroom does not have any windows.

Time of day with most light: Morning

Without additional light, the room is well lit: Yes

Additional Comments:

Temperature

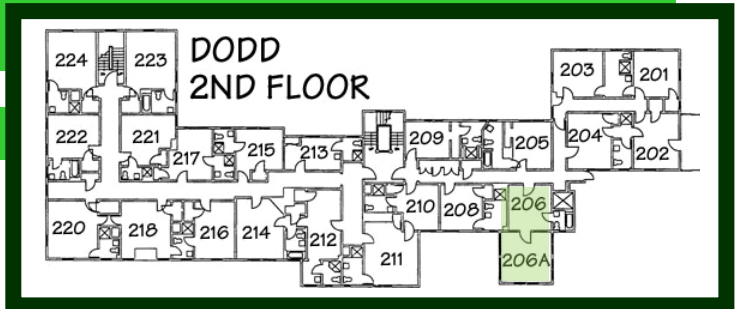
Room Temperature: Normal

The room temp is pretty normal except that you can't have the heat on full blast because you will roast. Putting on the snowflake setting usually keeps things warm enough. The attached bathroom doesn't have any heat though so you have to keep that door op

Ability to adjust heat: Yes, there is a thermostat

Unique Quirks

The back bedroom is surrounded by windows, with a view of the backyard. It hangs off of the building so noise from the hall is not a big distraction.



Bathroom

People who share the bathroom: 1

Sinks: 1

Toilets: 1

Bathtubs: Bathtub with showerhead

Windows: 1 window

Other comments: One of the knobs on the sink is hard to turn, and the hot water will sometimes come in and out while you're showering, but other than that the bathroom is really good. Beats sharing with a whole floor of people!

Dodd

208 (Single)

Basic Facts

Floor: Carpeted

Furniture included:

- Bed
- Nightstand
- Desk
- Dresser (Drawers only)
- Chair
- Bookcase
- Mirror

Adjustable Bed Height: No

Closet: Yes

Relatively large, not a walkin, one high shelf, no hooks

White Board on door: Yes

Slanted Ceilings: No

Light

Number of Windows: 0

Plenty of natural light: No

Time of day with most light: Don't notice

Without additional light, the room is well lit: Yes

Additional Comments:

Temperature

Room Temperature: Hot

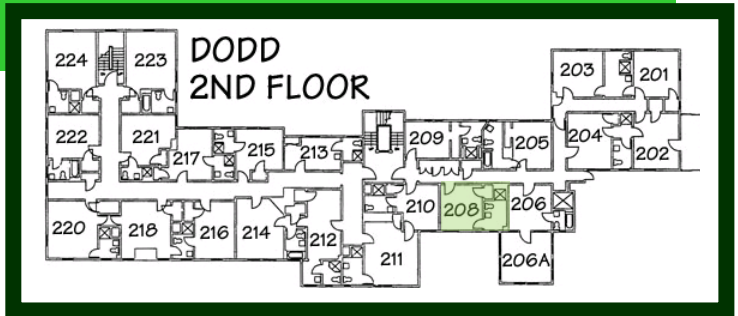
There is a control knob for the heat, but the lowest setting still leaves the room very hot

Ability to adjust heat: Yes, there is a thermostat

There is a knob on the furnace, but it really does not work very well

Unique Quirks

It has a private bathroom.



Bathroom

People who share the bathroom: 0 (private bathroom)

Sinks: 1

Toilets: 1

Bathtubs: Shower

Windows: 1 window

Other comments: It has a lot of extra space. The lightswitch is on the outside of the bathroom.

Dodd

209 (Single)

Basic Facts

Floor: Carpeted

Furniture included:

- Bed
- Desk
- Dresser (Drawers only)
- Chair
- Bookcase

Adjustable Bed Height: No

Closet: Yes

White Board on door: Yes

Slanted Ceilings: No

Light

Number of Windows: 3

Plenty of natural light: Yes

Time of day with most light: Morning

Without additional light, the room is well lit: Yes

Additional Comments:

Temperature

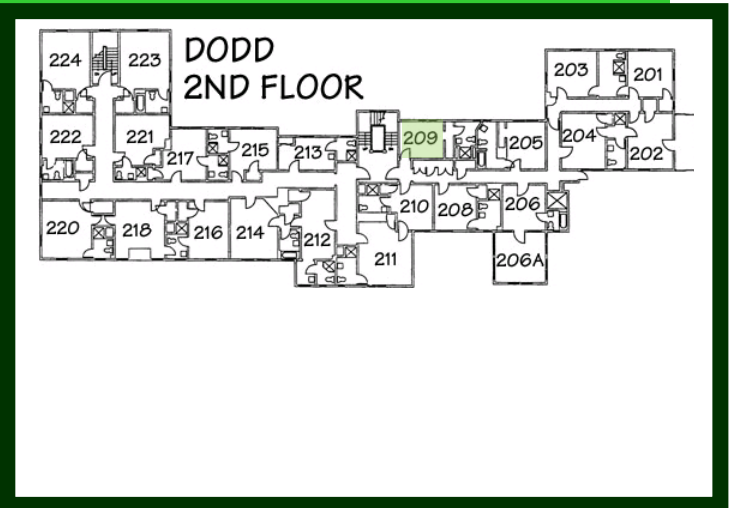
Room Temperature: Hot

It's a sauna, and my friends call it the oven...

Ability to adjust heat: Yes, there is a thermostat

Unique Quirks

It's really hot, even when the radiator is on snowflake, and if i open the window, the floor-level will get cold, while the shoulder-head area remains boiling!!



Bathroom

People who share the bathroom: 0 (private bathroom)

Sinks: 1

Toilets: 1

Bathtubs: Shower

Windows: 1 window

Other comments: I luv it, but more shelf space would be greatly appreciated!!

Dodd

210 (Single)

Basic Facts

Floor: Carpeted

Furniture included:

- Bed
- Nightstand
- Desk
- Dresser (Drawers only)
- Chair
- Bookcase
- Mirror

Adjustable Bed Height: No

Closet: Yes

White Board on door: Yes

Slanted Ceilings: No

Light

Number of Windows: 2

Plenty of natural light: Yes

Time of day with most light: Morning

Without additional light, the room is well lit: Yes

Additional Comments:

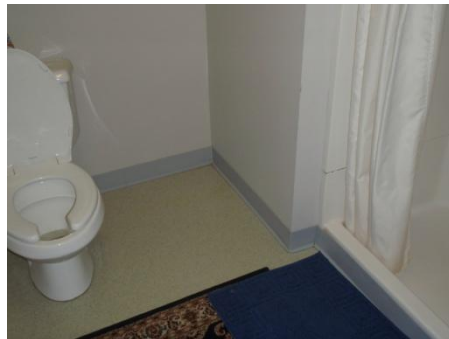
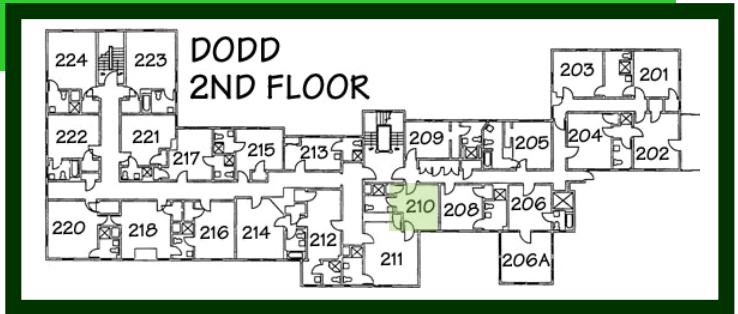
Temperature

Room Temperature: Normal

Ability to adjust heat: Yes, there is a thermostat

Unique Quirks

Roof Access



Bathroom

People who share the bathroom: 0 (private bathroom)

Sinks: 1

Toilets: 1

Bathtubs: Shower

Windows: 1 window

Dodd

211 (Double)

Basic Facts

Floor: Carpeted

Furniture included:

- Bed
- Desk
- Dresser (Drawers only)
- Chair
- Bookcase

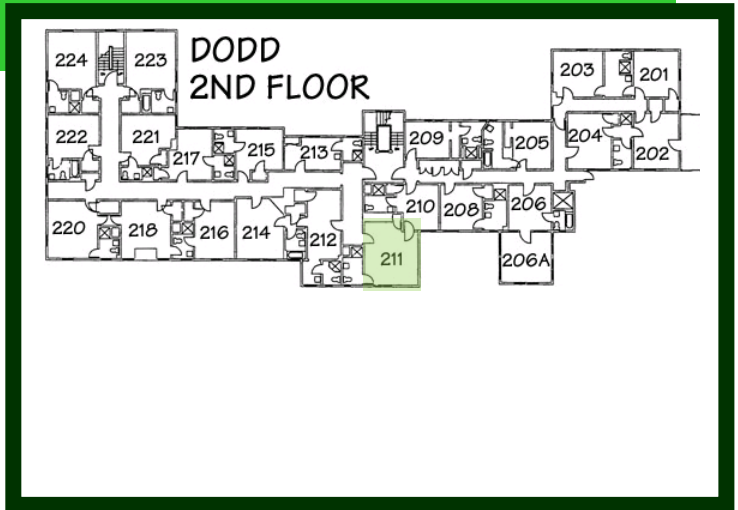
Adjustable Bed Height: No

Closet: Yes

Small.

White Board on door: Yes

Slanted Ceilings: No



Light

Number of Windows: 2

Plenty of natural light: Yes

Time of day with most light: Morning

Without additional light, the room is well lit: Yes

Additional Comments:

Temperature

Room Temperature: Normal-Hot

The heaters run too much. if the windows aren't open the room gets really hot. *All my heaters are at the minimum

Ability to adjust heat: There is no way to adjust the temperature

Just the rotating switches on the heaters

Unique Quirks

There is a connecting door to the next room, so if that person is loud you're screwed. This is a big double. You can walk out onto the roof like a deck.

Bathroom

People who share the bathroom: 0 (private bathroom)

Sinks: 1

Toilets: 1

Bathtubs: Shower

Windows: 1 window

Other comments:

Dodd

212 (Single)

Basic Facts

Floor: Carpeted

Furniture included:

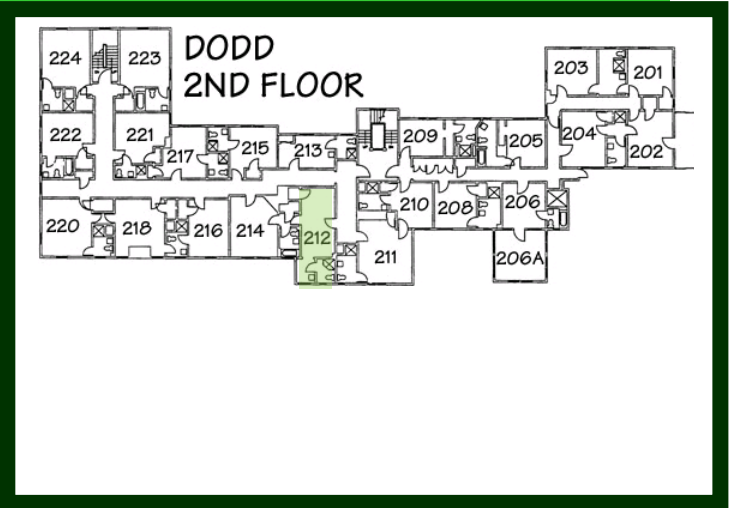
- Bed
- Nightstand
- Desk
- Dresser (Drawers only)
- Chair
- Bookcase

Adjustable Bed Height: Yes

Closet: Yes

White Board on door: Yes

Slanted Ceilings: No



Light

Number of Windows: 3

Plenty of natural light: No

The large window is in a little nook. The other two are smaller, one is in the bathroom.

Time of day with most light: Morning

Without additional light, the room is well lit: No

Additional Comments: Just the general single overhead light. Lamps are recommended.

Temperature

Room Temperature: Normal

I very seldom need to turn on the radiator.

Ability to adjust heat: Yes, there is a thermostat

It's a radiator with 8 settings.

Unique Quirks

Sink is outside the bathroom. Some banging from the radiator, but you get used to it pretty quickly. Door that connects to 214 with a small hallway in between.

Bathroom

People who share the bathroom: 0 (private bathroom)

Sinks: 1

Toilets: 1

Bathtubs: Shower

Windows: 1 window

Other comments: Shower head will squirt out of shower when the door is open. Bath mat recommended.

Dodd

213 (Single)

Basic Facts

Floor: Carpeted

Furniture included:

- Bed
- Nightstand
- Desk
- Dresser (Drawers only)
- Chair
- Bookcase

Adjustable Bed Height: Yes

Closet: Yes

White Board on door: Yes

Slanted Ceilings: No

Light

Number of Windows: 3

Plenty of natural light: No

The large window is in a little nook. The other two are smaller, one is in the bathroom.

Time of day with most light: Morning

Without additional light, the room is well lit: No

Additional Comments: Just the general single overhead light. Lamps are recommended.

Temperature

Room Temperature: Normal

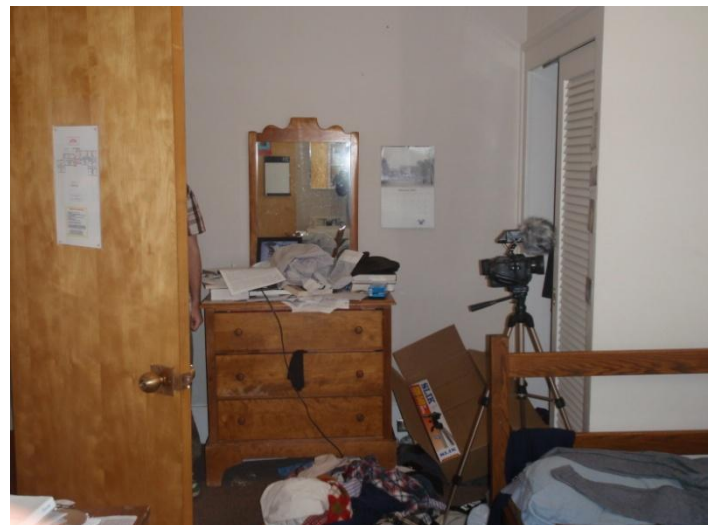
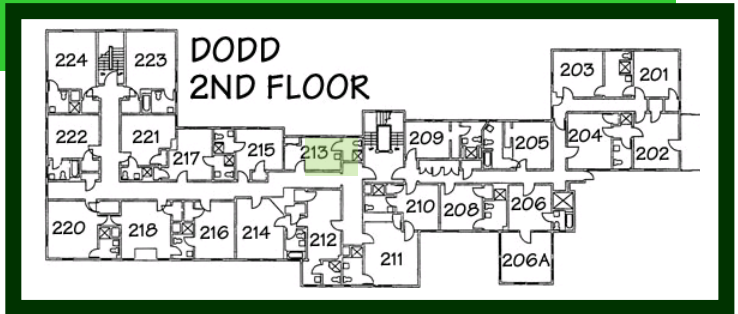
I very seldom need to turn on the radiator.

Ability to adjust heat: Yes, there is a thermostat

It's a radiator with 8 settings.

Unique Quirks

Sink is outside the bathroom. Some banging from the radiator, but you get used to it pretty quickly. Door that connects to 214 with a small hallway in between.



Bathroom

People who share the bathroom: 0
(private bathroom)

Sinks: 1

Toilets: 1

Bathtubs: Shower

Windows: 1 window

Other comments: Shower head will squirt out of shower when the door is open. Bath mat recommended.

