



Tyler Annex



Rooms

Singles: 40
Doubles: 0
Walk-through Doubles : 0

Public Spaces

2 Kitchens
2 Living Rooms
0 Public bathrooms

Laundry

2 Washers
2 Dryers

Communications

Cable: 1 jack per room
Phone: 1 line per room
Ethernet: 1 jack per bed

Disability Accommodations

Partial—some rooms, restroom, social space.

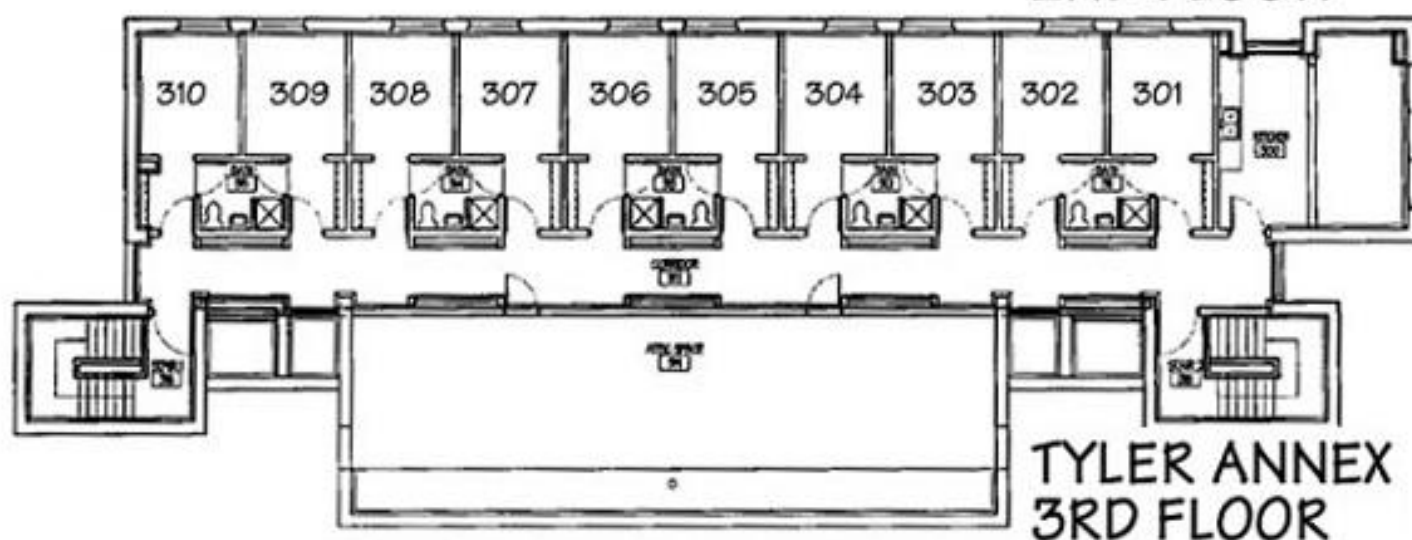
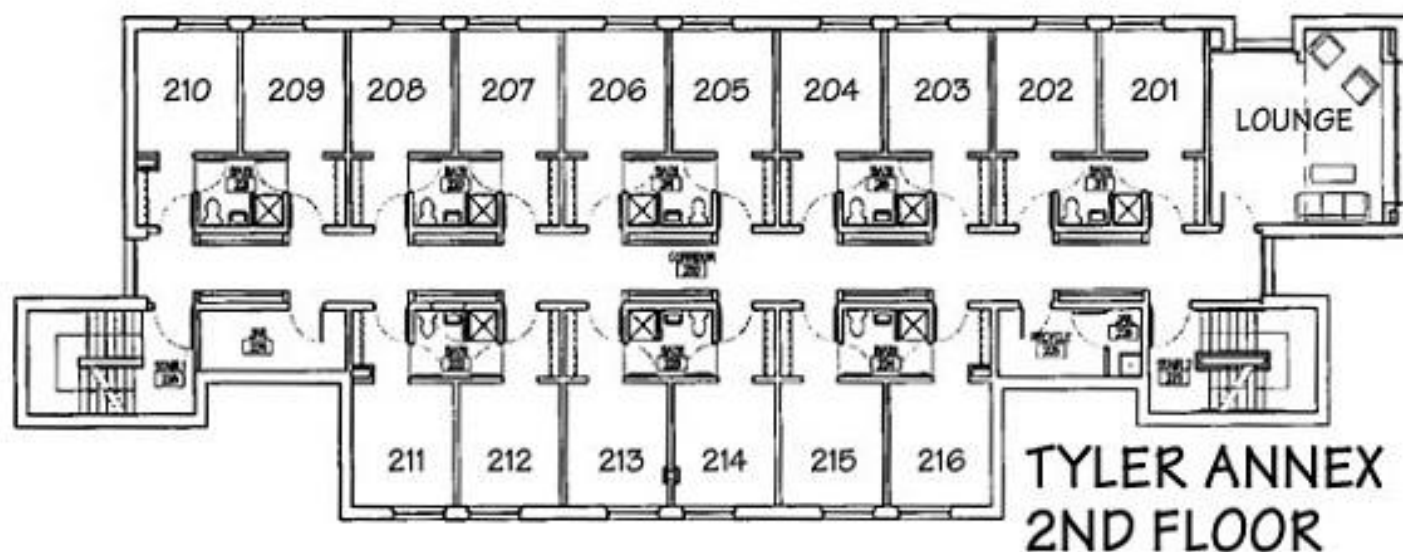
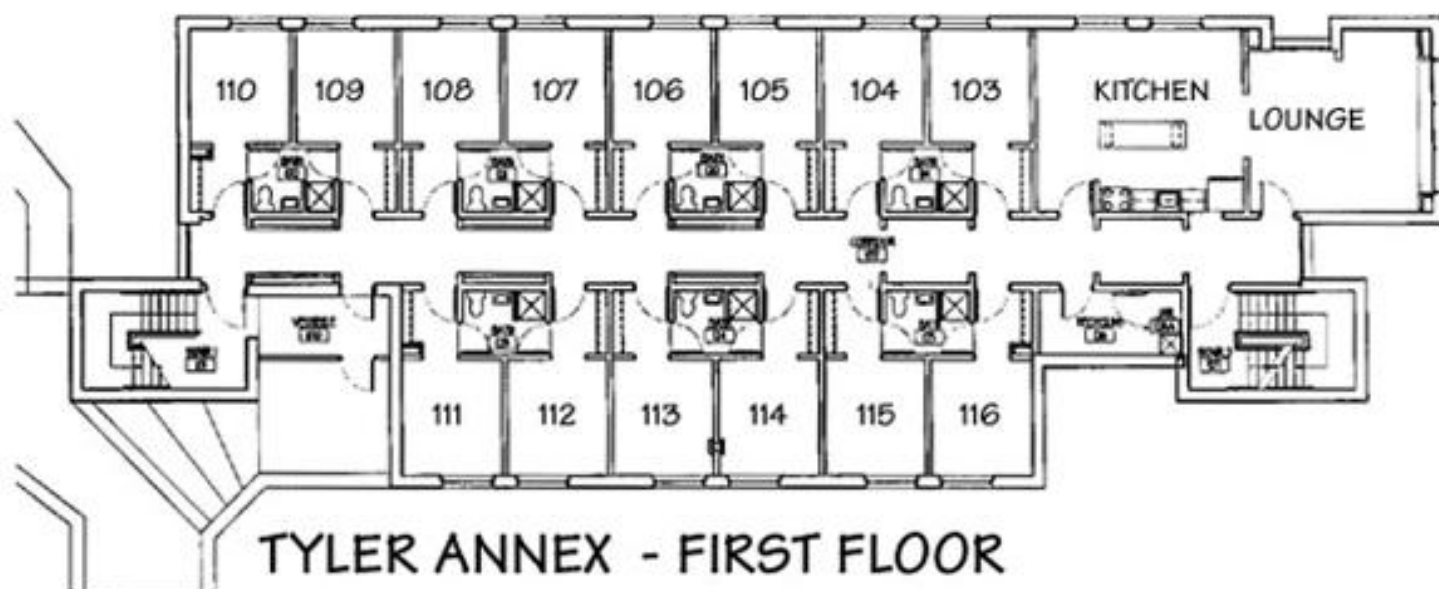
Other Features

- * TV with cable & DVD player
- * Convenient parking – directly outside door!
- * Grill outside
- * Huge lawn
- * Covered bike racks
- * Close to the Tennis Courts, Paddle Tennis Court, and Basketball Hoops

Tyler Annex, or "The Annex," as it is affectionately called, is adjacent to Tyler House. Featuring fine brick and cinder block rooms, Tyler House is the perfect haven for folks who want to feel like they live "off campus" but with all the amenities of on campus living. Tyler Annex boasts a great basement with kitchen and a pool table, with a view of a small forested area beyond a nice lawn. Deer often graze on the local greenery there, and keep students company as they trudge down the long driveway towards campus. Rooms are good sized, with common rooms on each floor and bathrooms shared by only two people. Those who've lived in Tyler Annex boast of its well-equipped common rooms, big windows, and comfortable living spaces. Just think of Tyler Annex as an evening retreat, away from the hustle and bustle of campus!

*Indicates that the rooms have been identified to be noisy due to external house related noises. Please see the room sheets for the specific source of noise.

No Doubles



Tyler Annex (Single)

Basic Facts

Floor: Carpeted

Furniture included:

- Bed
- Dresser (just drawers)
- Desk
- Chair
- Bookcase

Adjustable Bed Height: Yes

Closet: Yes – open closet about 4 feet long with a bar and shelf above it. Probably one of the best parts of the room!

White Board on door: No

Slanted Ceilings: No

Light

Number of Windows: 1 huge window

Plenty of natural light: on the side of the building facing the driveway, however, the side facing the lawn is dark

Time of day with most light: morning for rooms on the driveway side, afternoon for rooms on the lawn side

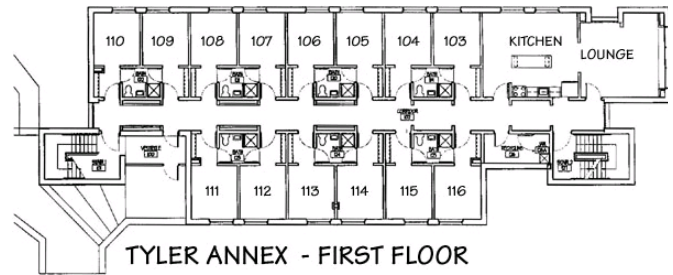
Without additional light, the room is well lit: no

Additional Comments: good bathroom situation

Temperature

Room Temperature: Hot

Ability to adjust heat: No



Bathroom

People who share the bathroom: 1

Sinks: 1

Toilets: 1

Bathtubs: 1 shower

Windows: 0

Other comments: the bathroom situation is great!

