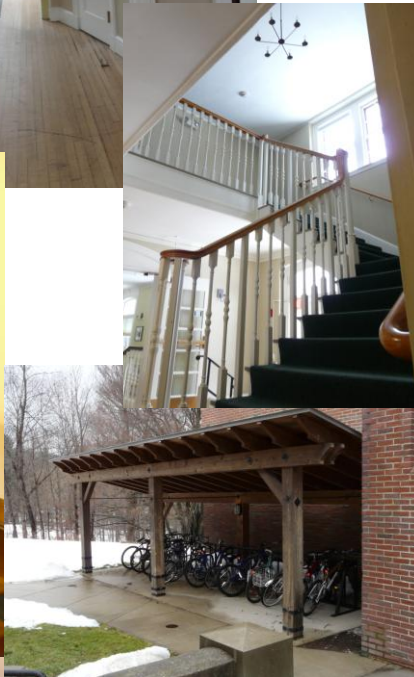




# Tyler House



## Rooms

Singles: 26  
Doubles: 5  
Walk-through Doubles : 0

## Public Spaces

Kitchen  
2 Living Rooms  
2 Public bathrooms

## Laundry

2 Washers  
2 Dryers

## Communications

Cable: 1 jack per room  
Phone: 1 line per room  
Ethernet: 1 jack per bed

## Disability Accommodations

Partial—some rooms, restroom, social space.

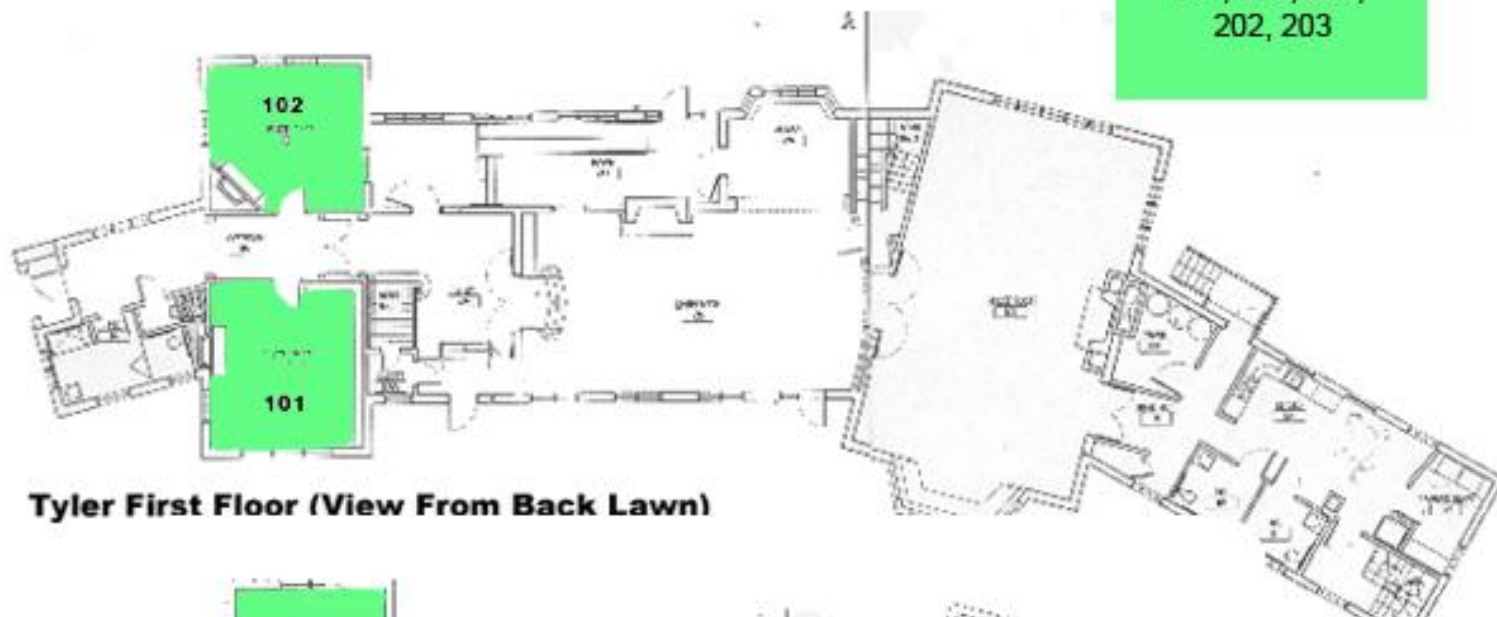
## Other Features

- \* TV with cable & DVD players
- \* Pool Table
- \* Piano
- \* 2 Working fireplaces
- \* Convenient parking – directly outside door!
- \* Grill outside
- \* Huge lawn
- \* Covered bike racks
- \* Close to the Tennis Courts, Paddle Tennis Court, and Basketball Hoops

Tyler House, a beautiful old fraternity, was converted to a dormitory in the 1970s. It is full of plush singles and doubles, perfect for seniors with mid-range lottery picks and sophomores with low ones. Rooms in Tyler House have hardwood floors and ample closet space--some even have old fireplaces, now boarded up for safety. The first floor of Tyler has two grand living rooms. One is known as the Moose Room, thanks to a giant moose head mounted above the working fireplace of the dark oak-panelled space.

\* Indicates that the rooms have been identified to be noisy due to external house related noises. Please see the room sheets for the specific source of noise.

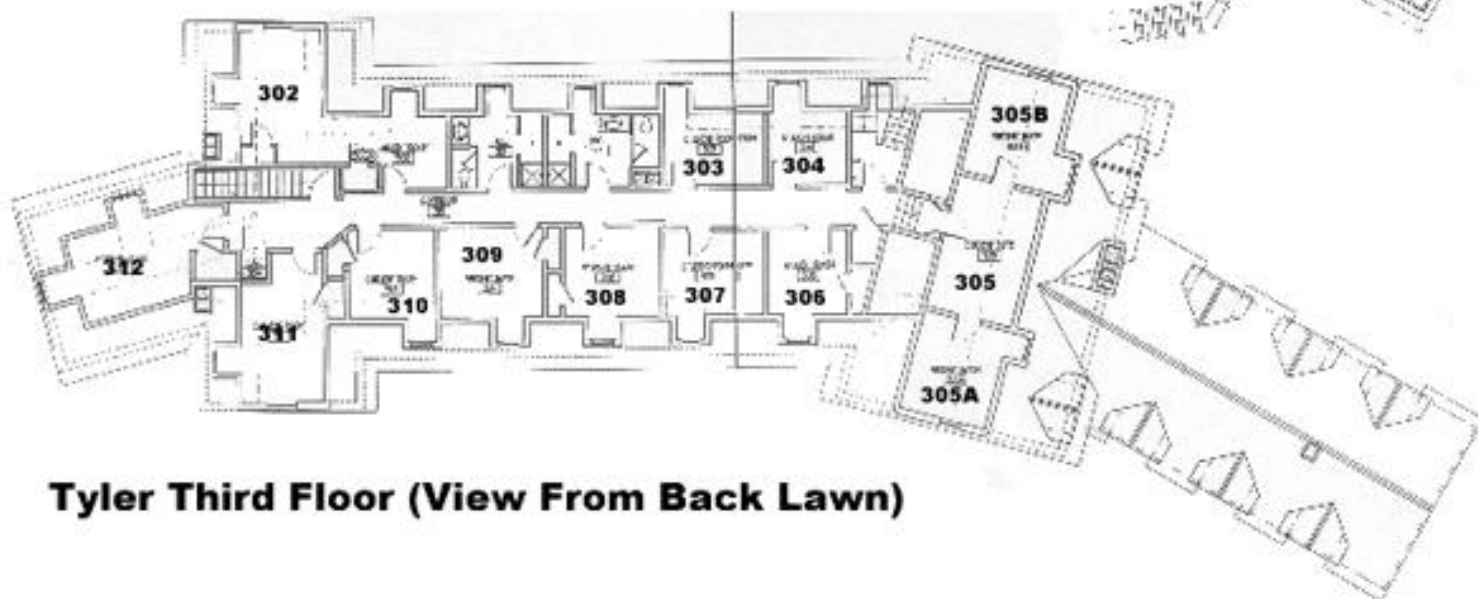
Doubles:  
101, 102, 201,  
202, 203



**Tyler First Floor (View From Back Lawn)**



**Tyler Second Floor (View From Back Lawn)**



**Tyler Third Floor (View From Back Lawn)**



# Tyler

101 (Double)

## Basic Facts

Floor: Exposed (hardwood or tile)

Furniture included: ➤ Bureau (Drawers & Hanging )

- Bed
- Nightstand
- Desk
- Dresser (Drawers only)
- Chair
- Bookcase
- Mirror

Adjustable Bed Height: No

Closet: No

White Board on door: No

Slanted Ceilings: No

## Light

Number of Windows: 4

Plenty of natural light: Yes

Time of day with most light: Morning

Without additional light, the room is well lit: No

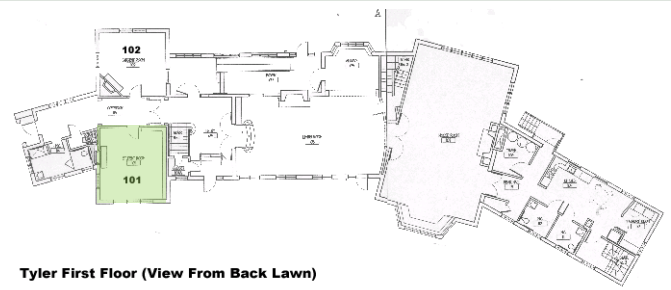
## Temperature

Room Temperature: Normal

Ability to adjust heat: Yes, there is a thermostat

## Unique Quirks

amazing 10-foot wall of windows! wall of book shelves!  
fireplace! gorgeous room!



## Bathroom

People who share the bathroom: 2 to 3

Sinks: 1

Toilets: 1

Bathtubs: Shower

Windows: 1 window

Other comments: you have to walk down the main entrance to get to it. many towel encounters.

# Tyler

203 (Single)

## Basic Facts

*Floor:* Exposed (hardwood or tile)

*Furniture included:* ➤ Bureau (Drawers & Hanging )

- Bed
- Nightstand
- Desk
- Dresser (Drawers only)
- Chair
- Bookcase
- Mirror

*Adjustable Bed Height:* No

*Closet:* No

*White Board on door:* No

*Slanted Ceilings:* No

## Light

*Number of Windows:* 4

*Plenty of natural light:* Yes

*Time of day with most light:* Morning

*Without additional light, the room is well lit:* No

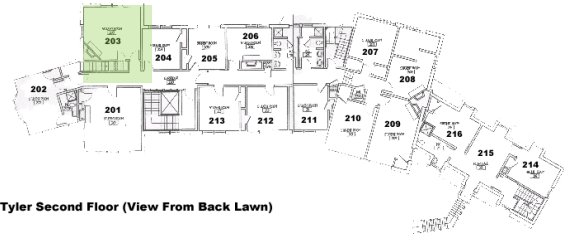
## Temperature

*Room Temperature:* Normal

*Ability to adjust heat:* Yes, there is a thermostat

## Unique Quirks

amazing 10-foot wall of windows! wall of book shelves!  
fireplace! gorgeous room!



Tyler Second Floor (View From Back Lawn)



## Bathroom

People who share the bathroom: 2 to 3

Sinks: 1

Toilets: 1

Bathtubs: Shower

Windows: 1 window

Other comments: you have to walk down the main entrance to get to it. many towel encounters.

# Tyler

204 (Single)

## Basic Facts

*Floor:* Exposed (hardwood or tile)

*Furniture included:*

- Bed
- Desk
- Dresser (Drawers only)
- Chair
- Bookcase
- Mirror

*Adjustable Bed Height:* No

*Closet:* Yes

Two bars to hang clothing, one on each side, two small shelves at the top, not very big.

*White Board on door:* No

*Slanted Ceilings:* No

## Light

*Number of Windows:* 2

*Plenty of natural light:* Yes

*Time of day with most light:* Afternoon

*Without additional light, the room is well lit:* No

*Additional Comments:* Overhead light does not always provide adequate light, while it does light up the entire room, it can be fairly dull.

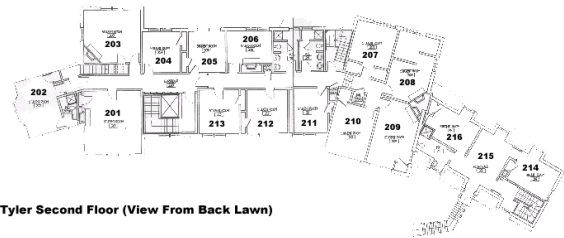
## Temperature

*Room Temperature:* Normal

*Ability to adjust heat:* Yes, there is a thermostat

The thermostat is not labeled though, so there is guesswork involved with using it.

## Unique Quirks



Tyler Second Floor (View From Back Lawn)



## Bathroom

People who share the bathroom: 6

Sinks: 1

Toilets: 1

Bathtubs: Shower

Windows: 1 window

Other comments:

# Tyler

205 (Single)

## Basic Facts

*Floor:* Carpeted

*Furniture included:*

- Bed
- Desk
- Dresser (Drawers only)
- Bureau (Drawers and Hanging Space)
- Chair
- Bookcase
- Mirror

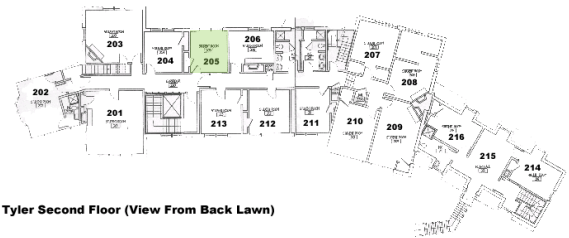
*Adjustable Bed Height:* No

*Closet:* Yes

One big shelf running across the top. Approximately 4 feet in width and 2 feet in depth.

*White Board on door:* No

*Slanted Ceilings:* No



Tyler Second Floor (View From Back Lawn)

## Light

*Number of Windows:* 2

*Plenty of natural light:* Yes

*Time of day with most light:* Don't notice

*Without additional light, the room is well lit:* No

*Additional Comments:* When reading in bed or at my desk, I require an extra lamp.

## Temperature

*Room Temperature:* Normal

Heat is adjustable, so I can higher or lower temperature as desired.

*Ability to adjust heat:* Yes, there is a thermostat

## Unique Quirks

## Bathroom

People who share the bathroom: 4 to 5

Sinks: 2

Toilets: 1

Bathtubs: Shower

Windows: 1 window

Other comments:

# Tyler

208 (Double)

## Basic Facts

*Floor:* Exposed (hardwood or tile)

*Furniture included:*

- Bed
- Desk
- Bureau (Drawers and Hanging Space)
- Chair
- Bookcase

*Adjustable Bed Height:* No

*Closet:* No

*White Board on door:* Yes

*Slanted Ceilings:* Yes

No, I placed my bed underneath the slanted ceiling so it was quite cozy.

## Light

*Number of Windows:* 2

*Plenty of natural light:* Yes

*Time of day with most light:* Afternoon

*Without additional light, the room is well lit:* No

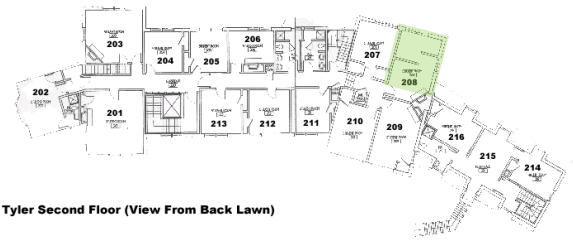
*Additional Comments:*

## Temperature

*Room Temperature:* Normal

*Ability to adjust heat:* There is no way to adjust the temperature

## Unique Quirks



Tyler Second Floor (View From Back Lawn)

## Bathroom

People who share the bathroom: 6

Sinks: 2

Toilets: 2

Bathtubs: Shower

Windows: 1 window

Other comments:



# Tyler

209 (Single)

## Basic Facts

*Floor:* Exposed (hardwood or tile)

*Furniture included:*

- Bed
- Desk
- Dresser (Drawers only)
- Bureau (Drawers and Hanging Space)
- Chair
- Bookcase
- Mirror

*Adjustable Bed Height:* Yes

*Closet:* Yes

*White Board on door:* No

*Slanted Ceilings:* Yes

## Light

*Number of Windows:* 3

*Plenty of natural light:* Yes

*Time of day with most light:* Morning

*Without additional light, the room is well lit:* Yes

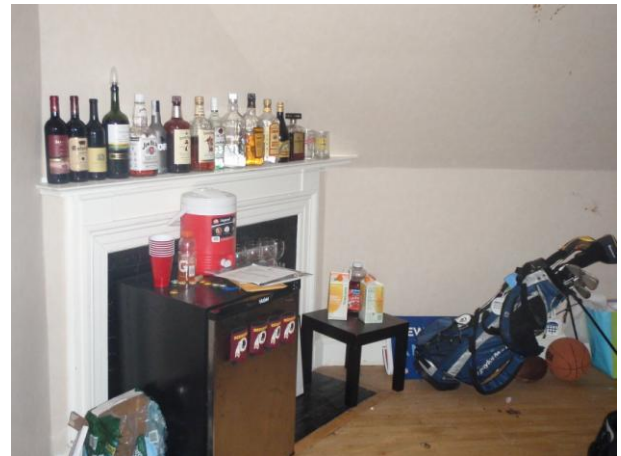
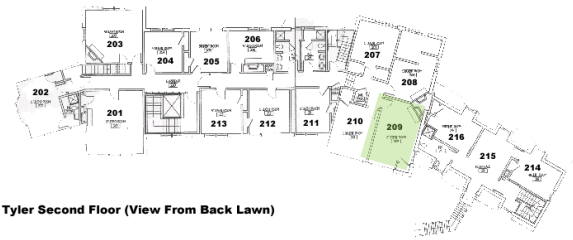
*Additional Comments:*

## Temperature

*Room Temperature:* Normal

*Ability to adjust heat:* Yes, there is a thermostat

## Unique Quirks



## Bathroom

*People who share the bathroom:* 4 to 5

*Sinks:* 2

*Toilets:* 1

*Bathtubs:* Shower

*Windows:* 1 window

*Other comments:*



# Tyler

216 (Single)

## Basic Facts

*Floor:* Exposed (hardwood or tile)

*Furniture included:*

- Bed
- Desk
- Dresser (Drawers only)
- Bureau (Drawers and Hanging Space)
- Chair
- Bookcase
- Mirror

*Adjustable Bed Height:* Yes

*Closet:* Yes

*White Board on door:* No

*Slanted Ceilings:* Yes

## Light

*Number of Windows:* 3

*Plenty of natural light:* Yes

*Time of day with most light:* Morning

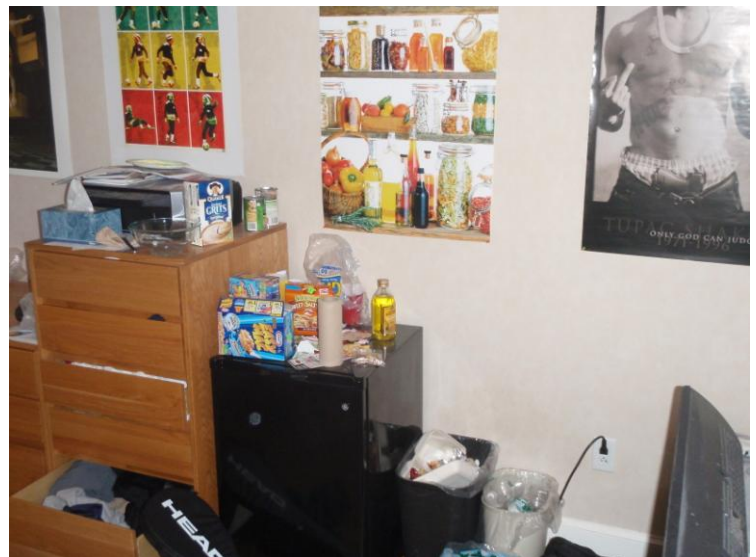
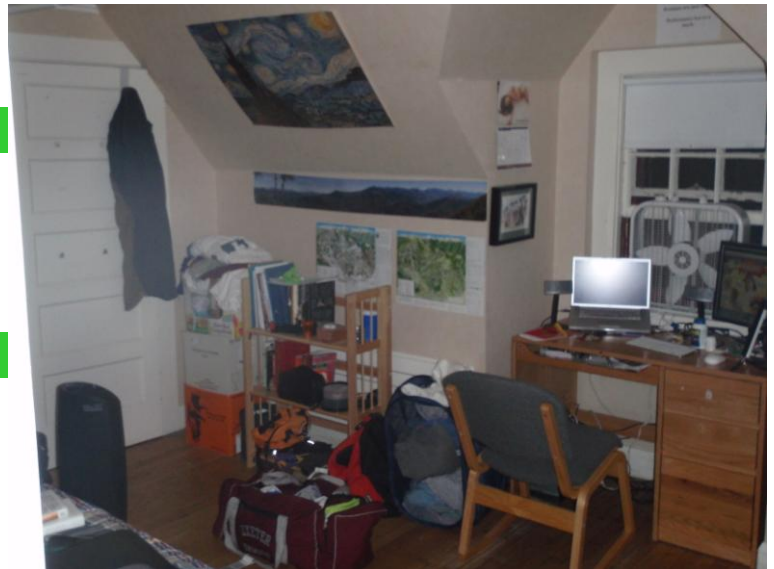
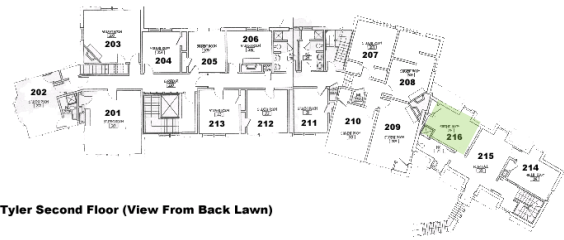
*Without additional light, the room is well lit:* Yes

*Additional Comments:*

## Temperature

*Room Temperature:* Normal

*Ability to adjust heat:* Yes, there is a thermostat



## Bathroom

People who share the bathroom: 4 to 5

Sinks: 2

Toilets: 1

Bathtubs: Shower

Windows: 1 window

Other comments:

# Tyler

302 (single)

## Basic Facts

*Floor:* Exposed (hardwood or tile)

*Furniture included:*

- Bed
- Desk
- Dresser (Drawers only)
- Bureau (Drawers and Hanging Space)
- Chair
- Bookcase
- Mirror

*Adjustable Bed Height:* No

*Closet:* No

*White Board on door:* No

*Slanted Ceilings:* Yes

## Light

*Number of Windows:* 1

*Plenty of natural light:* No

north facing window limits the amount of light that can enter the room

*Time of day with most light:* Don't notice

*Without additional light, the room is well lit:* No

*Additional Comments:* tiny room..kinda claustrophobic sometimes.. i hardly spend time in it

## Temperature

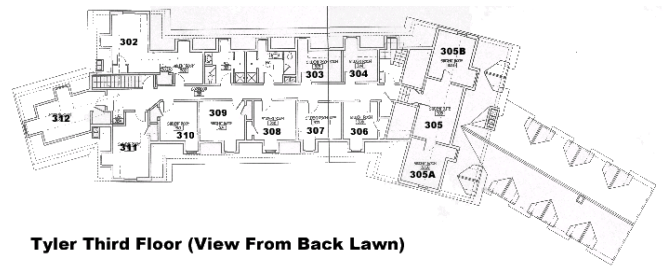
*Room Temperature:* Hot

the heating is kinda unbalanced at times. too hot or too cold but more hot than cold

*Ability to adjust heat:* Yes, there is a thermostat

## Unique Quirks

heating is funky..it is either too hot or too cold.. and the radiator makes a weird bubbly sound like water boiling whenever I turn the heat up. Furthermore, the window rattles a little at night which might bother obsessive sleepers sensitive to any monotonous noise



**Tyler Third Floor (View From Back Lawn)**

## Bathroom

People who share the bathroom: 2 to 3

Sinks: 1

Toilets: 1

Bathtubs: Shower

Windows: 1 window

Other comments:

# Tyler

302 (single)

## Basic Facts

*Floor:* Exposed (hardwood or tile)

*Furniture included:*

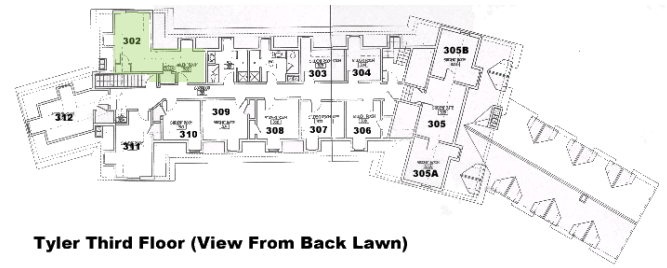
- Bed
- Desk
- Dresser (Drawers only)
- Chair
- Bookcase
- Mirror

*Adjustable Bed Height:* Yes

*Closet:* Yes

*White Board on door:* No

*Slanted Ceilings:* Yes



**Tyler Third Floor (View From Back Lawn)**

## Light

*Number of Windows:* 3

*Plenty of natural light:* Yes

*Time of day with most light:* Morning

*Without additional light, the room is well lit:* No

*Additional Comments:* The fixed lights were inefficiently placed

## Temperature

*Room Temperature:* Normal

*Ability to adjust heat:* Yes, there is a thermostat

## Unique Quirks

The room is somewhat divided, as it narrows as you walk towards the door, before expanding into a little nook

## Bathroom

People who share the bathroom: 2 to 3

Sinks: 1

Toilets: 1

Bathtubs: Shower

Windows: 1 window

Other comments:



# Tyler

304 (Single)

## Basic Facts

*Floor:* Exposed (hardwood or tile)

*Furniture included:*

- Bed
- Desk
- Bureau (Drawers and Hanging Space)
- Chair
- Mirror
- shelving

*Adjustable Bed Height:* No

*Closet:* No

The bureau has two drawers, a few feet of hanging space, and a shelf. There are three sets of shelves (3, 3, and 5 shelves per set).

*White Board on door:* Yes

But I think last year's resident left it there - most other rooms don't.

*Slanted Ceilings:* Yes

A bit, I mean I can't stand up on my desk but that's about all they impact.

## Light

*Number of Windows:* 1

*Plenty of natural light:* No

It gets some natural light, but mostly in the afternoon and because the window is in an alcove, most of the light doesn't hit the desk area.

*Time of day with most light:* Afternoon

*Without additional light, the room is well lit:* Yes

*Additional Comments:*

## Temperature

*Room Temperature:* Normal

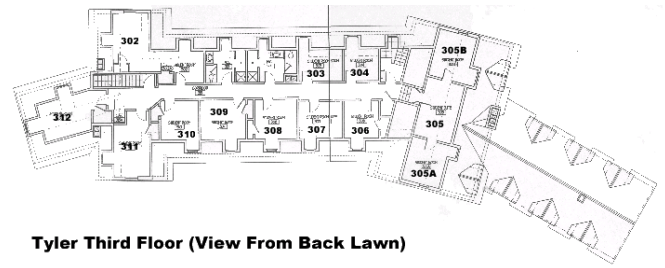
Heating is adjustable. There's a bit of a draft by the window but with the storm window closed it's not much of an issue.

*Ability to adjust heat:* Yes, there is a thermostat

There's a dial on the radiator.

## Unique Quirks

Very oddly shaped - the bed is half in an alcove carved out by the window casement. Also very small. Cosy, if you will.



**Tyler Third Floor (View From Back Lawn)**

## Bathroom

People who share the bathroom: 4 to 5

Sinks: 1

Toilets: 1

Bathtubs: Shower

Windows: 1 window

Other comments: Occasionally lots of hair in the shower (mostly girls use this bathroom). I generally wear flip-flops but that's probably because I'm a bit of a germophobe.

# Tyler

306 (Single)

## Basic Facts

*Floor:*

*Furniture included:*

*Adjustable Bed Height:*

*Closet:*

*White Board on door:*

*Slanted Ceilings:*

## Light

*Number of Windows:*

*Plenty of natural light:*

*Time of day with most light:*

*Without additional light, the room is well lit:*

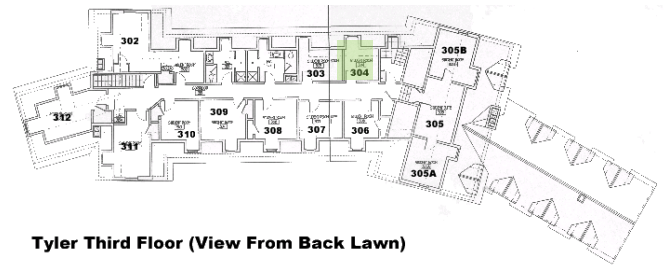
*Additional Comments:*

## Temperature

*Room Temperature:*

*Ability to adjust heat:*

## Unique Quirks



**Tyler Third Floor (View From Back Lawn)**

## Bathroom

People who share the bathroom:

Sinks:

Toilets:

Bathtubs:

Windows:

Other comments:

# Tyler

307 (Single)

## Basic Facts

*Floor:* Exposed (hardwood or tile)

*Furniture included:*

- Bed
- Desk
- Bureau (Drawers and Hanging Space)
- Mirror

*Adjustable Bed Height:* No

*Closet:* Yes

not a built-in closet. its like the ones in mission

*White Board on door:* No

*Slanted Ceilings:* Yes

makes the room unbearably small

## Light

*Number of Windows:* 1

*Plenty of natural light:* Yes

*Time of day with most light:* Morning

*Without additional light, the room is well lit:* Yes

*Additional Comments:*

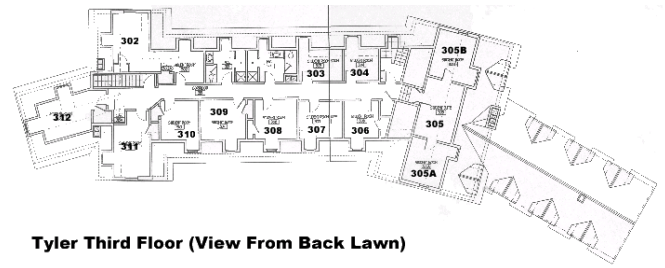
## Temperature

*Room Temperature:* Hot

*Ability to adjust heat:* Yes, there is a thermostat

## Unique Quirks

the worst room on campus. small beyond belief. next to the stairwell so noisy and cramped



**Tyler Third Floor (View From Back Lawn)**

## Bathroom

People who share the bathroom: 4 to 5

Sinks: 2

Toilets: 2

Bathtubs: Shower

Windows: 1 window

Other comments:



# Tyler

312 (Single)

## Basic Facts

*Floor:* Exposed (hardwood or tile)

*Furniture included:*

- Bed
- Desk
- Dresser (Drawers only)
- Chair

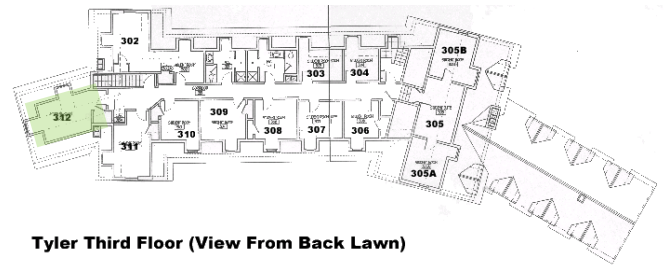
*Adjustable Bed Height:* No

*Closet:* Yes

Huge, but it has no lighting. It is in a very dark corner. It has one top shelf and a rod for hangers.

*White Board on door:* No

*Slanted Ceilings:* Yes



**Tyler Third Floor (View From Back Lawn)**

## Light

*Number of Windows:* 2

*Plenty of natural light:* Yes

*Time of day with most light:* Afternoon

*Without additional light, the room is well lit:* No

*Additional Comments:* The closet is dark even during the day and there is no way to put a light into it.

## Temperature

*Room Temperature:* Hot

It can get very hot especially in the beginning weeks of Fall semester because it is on the third floor, and i suppose, heat rises.

*Ability to adjust heat:* Yes, there is a thermostat

## Unique Quirks

It is a very irregular shape. It has a lot of angles. The heater is incredibly noisy.

## Bathroom

People who share the bathroom: 4 to 5

Sinks: 2

Toilets: 2

Bathtubs: Shower

Windows: 1 window

Other comments: It's awful sharing with boys who don't flush.