

# Hubbell

104 (Single)

## Basic Facts

*Floor:* Exposed (hardwood or tile)

*Furniture included:*

- Bed
- Desk
- Dresser (Drawers only)
- Chair
- Bookcase

*Adjustable Bed Height:* No

*Closet:* No

There is a small "non-closet" with a bar and shelf in the room

*White Board on door:* No

*Slanted Ceilings:* No

Huge ceilings.

## Light

*Number of Windows:* 1

*Plenty of natural light:* No

The one large window is shaded outside by the fire escape.

*Time of day with most light:* Don't notice

*Without additional light, the room is well lit:* Yes

*Additional Comments:*

## Temperature

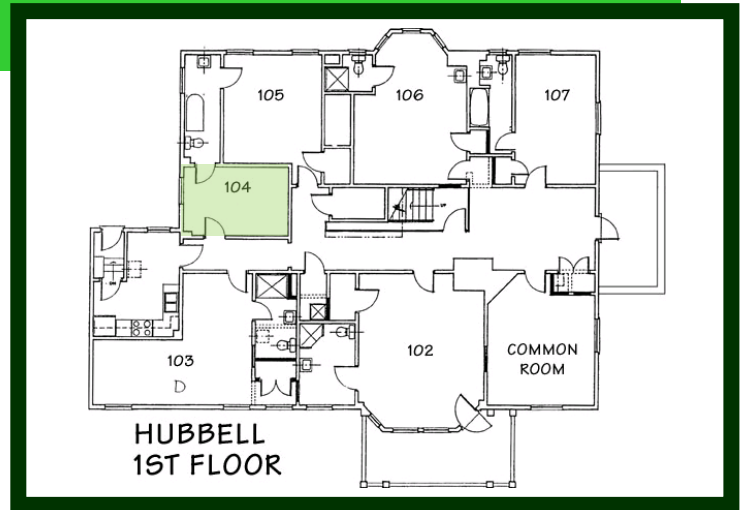
*Room Temperature:* Normal

It was extremely hot, but I think they fixed it.

*Ability to adjust heat:* There is no way to adjust the temperature

## Unique Quirks

It's pretty small with uneven floors and many exposed pipes, making the furniture arrangement difficult. Huge ceilings and large windows make it feel bigger, but it overlooks the graveyard. Those afraid of ghosts need not apply.



## Bathroom

People who share the bathroom: 1

Sinks: 1

Toilets: 1

Bathtubs: Bathtub with showerhead

Windows: 1 window

Other comments: The bathroom is very narrow with a door on either end. Invariably somebody forgets to unlock the other door. The bathtub is very slippery, you definitely need a bathmat.

# Hubbell

105 (Single)

## Basic Facts

*Floor:* Exposed (hardwood or tile)

*Furniture included:*

- Bed
- Desk
- Dresser (Drawers only)
- Chair
- Bookcase

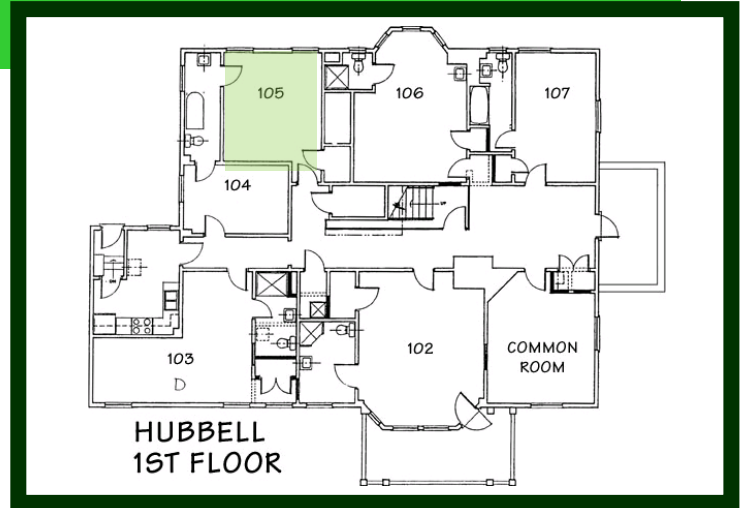
*Adjustable Bed Height:* No

*Closet:* Yes

Relatively big with one shelf.

*White Board on door:* No

*Slanted Ceilings:* No



## Light

*Number of Windows:* 2

*Plenty of natural light:* Y

*Time of day with most light:* Morning

*Without additional light, the room is well lit:* Yes

*Additional Comments:*

## Temperature

*Room Temperature:* Normal to Hot

The heater has no control, and B&G made me close the storm windows so that I have no way of controlling the temperature in the room

*Ability to adjust heat:* There is no way to adjust the temperature

## Unique Quirks

The bathroom has an amazingly high ceiling. The situation was sub-par because it had tons of problems and poor ventilation. The bathroom is shared with the adjacent single (106) and frequently we got locked out.

## Bathroom

People who share the bathroom: 2 to 3

Sinks: 1

Toilets: 1

Bathtubs: Bathtub with showerhead

Windows: 1 window

Other comments: The bathroom is a disaster. The toilet has gotten backed up 3 times (to my knowledge) already. When I moved in the shower curtain was moldy and too small, so whenever somebody took a shower tons of water went onto the floor. There is no ventilation.

# Hubbell

106 (Double)

## Basic Facts

*Floor:* Exposed (hardwood or tile)

*Furniture included:*

- Bed
- Desk
- Dresser (Drawers only)
- Chair
- Bookcase
- Mirror

*Adjustable Bed Height:* No

*Closet:* No

2.5' by 5', one pole for hangers, no hooks, one shelf

*White Board on door:* No

*Slanted Ceilings:* No

## Light

*Number of Windows:* 1

*Plenty of natural light:* Yes

*Time of day with most light:* Morning

*Without additional light, the room is well lit:* Yes

*Additional Comments:*

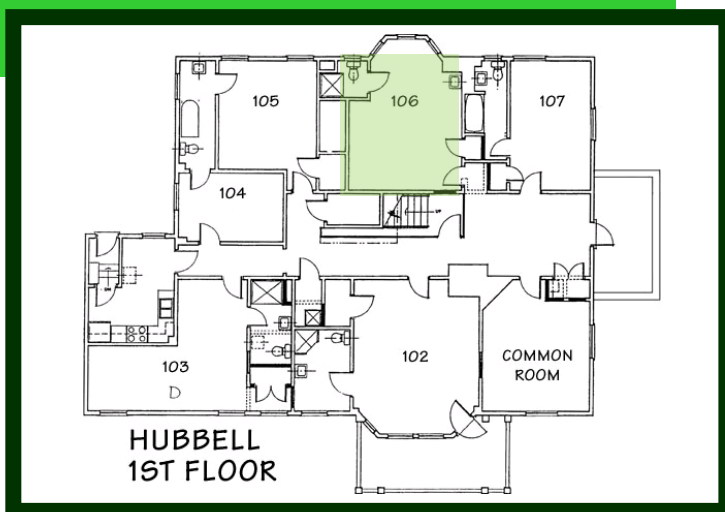
## Temperature

*Room Temperature:* Normal - cold

*Ability to adjust heat:* There is no way to adjust the temperature

## Unique Quirks

Very high ceilings.



## Bathroom

People who share the bathroom: 1

Sinks: 1

Toilets: 1

Bathtubs: Shower

Windows: 1 window

Other comments:

# Hubbell

107 (Single)

## Basic Facts

*Floor:* Exposed (hardwood or tile)

*Furniture included:*

- Bed
- Nightstand
- Desk
- Dresser (Drawers only)
- Chair
- Bookcase

*Adjustable Bed Height:* No

*Closet:* Yes

Pretty much useless shelving above (small opening to medium space), medium size.

*White Board on door:* No

*Slanted Ceilings:* No

## Light

*Number of Windows:* 2

*Plenty of natural light:* No

Entrance blocks light at sundown, only get some light at sunup because of trees, window makes my personal life open to the public, so I blocked the bottom.

*Time of day with most light:* Morning

*Without additional light, the room is well lit:* Yes

*Additional Comments:* Bathroom is well lit, could use more lighting because the ceiling is so high, but it's okay.

## Temperature

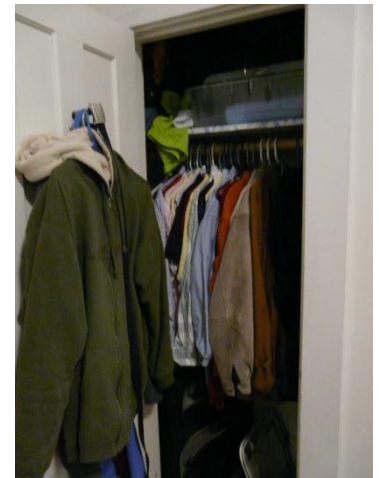
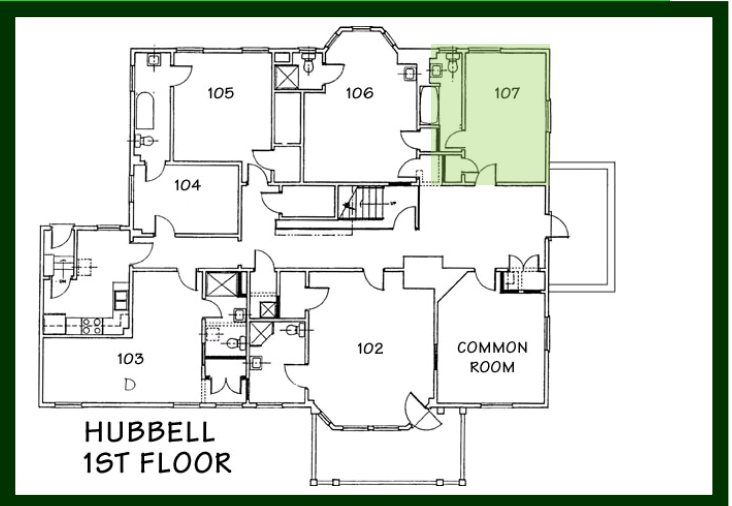
*Room Temperature:* Cold

Too cold or too hot, never just right.

*Ability to adjust heat:* There is no way to adjust the temperature

## Unique Quirks

Tall ceilings.



## Bathroom

People who share the bathroom: 0 (private bathroom)

Sinks: 1

Toilets: 1

Bathtubs: Bathtub with showerhead

Windows: 1 window

Other comments: Window is very small, steams up very easily.





# Hubbell

201 (Single)

## Basic Facts

*Floor:* Exposed (hardwood or tile)

*Furniture included:*

➤ Bed	➤ Dresser (Drawers only)
➤ Nightstand	➤ Chair
➤ Desk	➤ Bookcase
	➤ Mirror

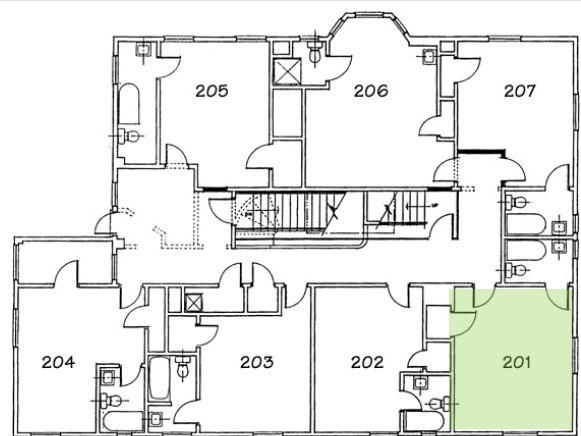
*Adjustable Bed Height:* No

*Closet:* Yes

~ 3 ft deep, 4 ft wide - hanging rod - top shelf for added storage - a few semi-permanent plastic hooks on the sides and back of closet door. - plenty of floor space for shoes etc.

*White Board on door:* No

*Slanted Ceilings:* No



HUBBELL - 2ND FLOOR

## Light

Number of Windows: 2

*Plenty of natural light:* Yes

My room faces southwest, so it gets plenty of natural sunlight.

*Time of day with most light:* Don't notice

*Without additional light, the room is well lit:* No

*Additional Comments:* There is only one overhead lighting unit on a high ceiling, so I'd recommend at least a desk lamp and bedside table lamp.

## Temperature

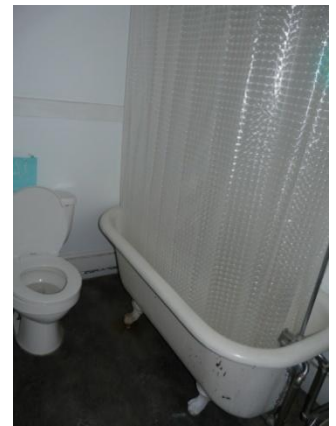
*Room Temperature:* Hot

In the fall it tended to be hot because of the added sunlight.

Although, this winter it has been colder due to more exposed walls (corner room) than adjoining rooms.

*Ability to adjust heat:* There is no way to adjust the temperature

There is one thermostat that controls the temperature of the 2nd floor in room 203



## Bathroom

People who share the bathroom: 0 (private bathroom)

Sinks: 1

Toilets: 1

Bathtubs: Bathtub with showerhead

Windows: 1 window

*Other comments:* - old-fashioned claw-foot tub - medicine cabinet with mirror above sink. - sink has separate faucets for hot and cold water, making it difficult to get a medium water temperature. - a few hooks for hanging towels, etc.



# Hubbell

204 (Single)

## Basic Facts

*Floor:* Exposed (hardwood or tile)

*Furniture included:*

- Bed
- Nightstand
- Desk
- Dresser (Drawers only)
- Chair
- Bookcase

*Adjustable Bed Height:* No

*Closet:* Yes

Large size. Two shelves. Two rods for hanging. Three hooks.

*White Board on door:* No

*Slanted Ceilings:* No

## Light

*Number of Windows:* 4

*Plenty of natural light:* No

The room is north-facing with small windows and is surrounded by trees; nearly no natural light is received.

*Time of day with most light:* Don't notice

*Without additional light, the room is well lit:* No

*Additional Comments:* Additional light is often needed.

The bathroom light is connected to the fan, making the use of one without the other impossible.

## Temperature

*Room Temperature:* Cold

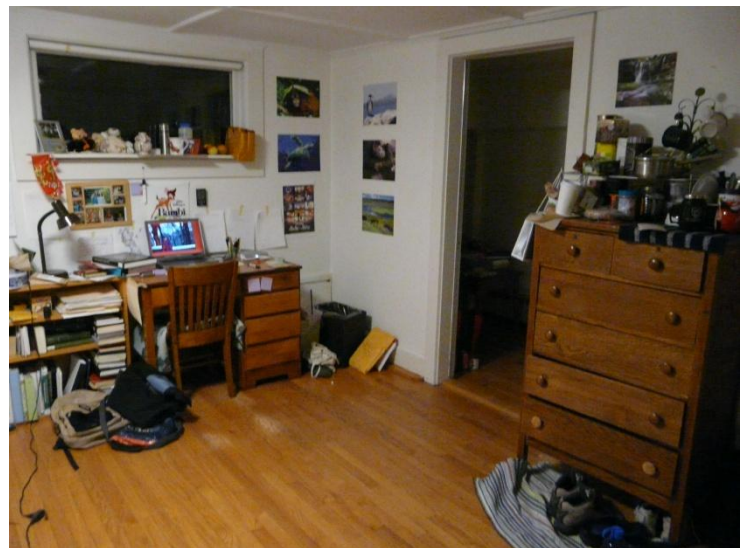
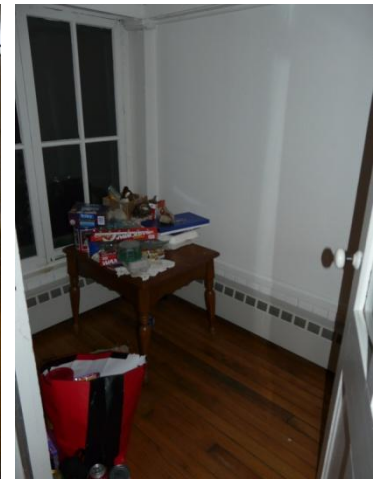
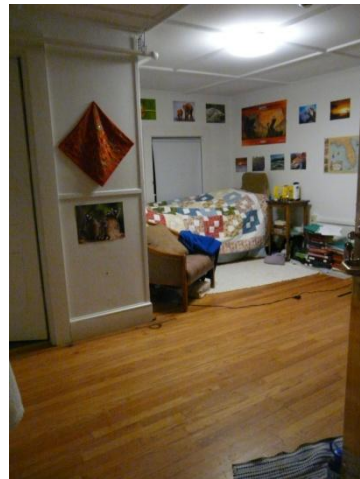
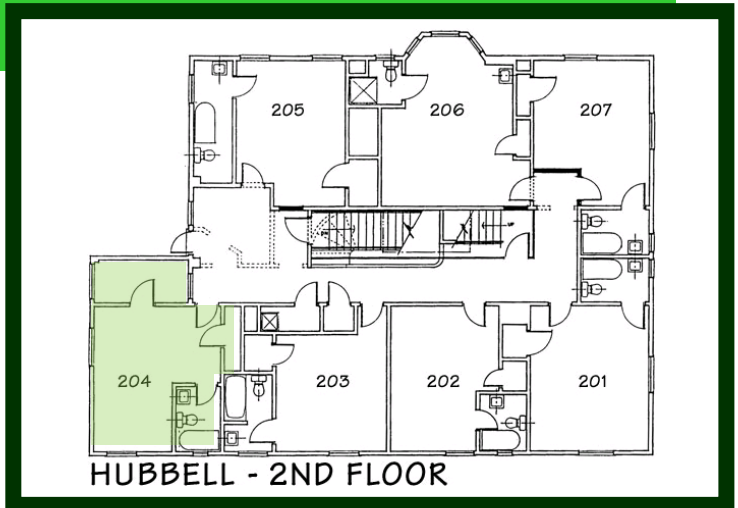
No natural light; thermostat is in the room next door; appears to be at the end of the central heating chain for Hubbell 2nd floor.

*Ability to adjust heat:* There is no way to adjust the temperature

Thermostat is in room next door.

## Unique Quirks

The room has a nook attached to it. Said nook is a small room with no electrical outlets but a stunning view of the college cemetery. The room itself is north-facing with few windows, and tends to be the coldest on the second floor of Hubbell, with temperatures noticeably lower than in the hallway. It has a great bathtub and lots of space.



## Bathroom

People who share the bathroom: 0 (private bathroom)

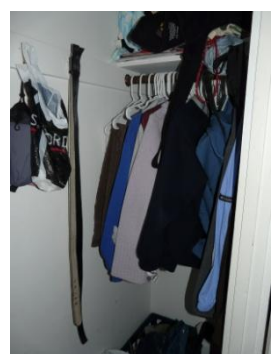
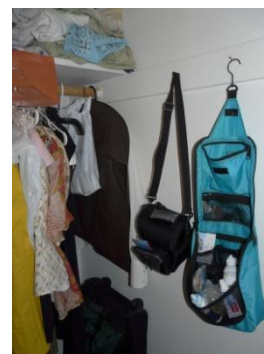
Sinks: 1

Toilets: 1

Bathtubs: Bathtub with showerhead

Windows: 1 window

Other comments: Private bath is a huge perk!





# Hubbell

205 (Single)

## Basic Facts

*Floor:* Exposed (hardwood or tile)

*Furniture included:*

- Bed
- Desk
- Dresser (Drawers only)
- Bureau (Drawers and Hanging Space)
- Chair
- Bookcase
- Mirror

*Adjustable Bed Height:* Yes

*Closet:* Yes

Pretty large. Hanging bar. Four hooks, one shelf on top.

*White Board on door:* No

*Slanted Ceilings:* No

## Light

*Number of Windows:* 2

*Plenty of natural light:* Yes

At dusk it's a bit dim, but the morning is nice and bright.

*Time of day with most light:* Morning

*Without additional light, the room is well lit:* Yes

*Additional Comments:*

## Temperature

*Room Temperature:* Normal

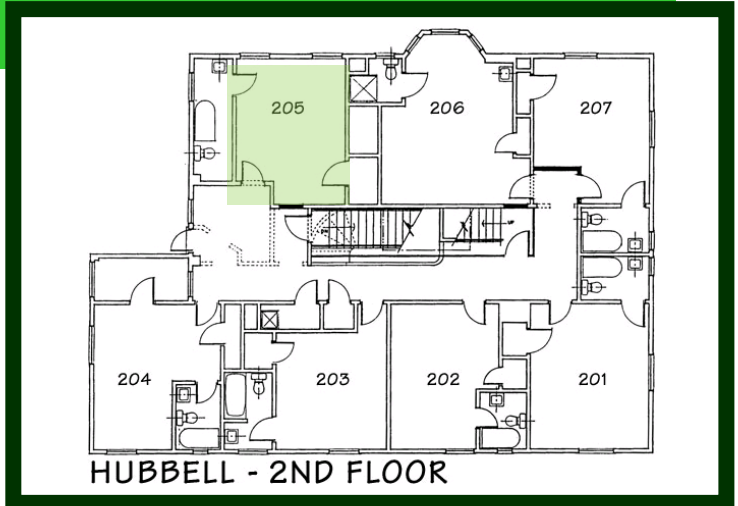
But very hot (too hot) in winter.

*Ability to adjust heat:* There is no way to adjust the temperature

I wish there were.

## Unique Quirks

Huge bathroom with claw-footed tub!



## Bathroom

People who share the bathroom: 0 (private bathroom)

Sinks: 1

Toilets: 1

Bathtubs: Bathtub with showerhead

Windows: 1 window

Other comments: The window doesn't open though. There's a fan, but ventilation still leaves much to be desired.

# Hubbell

206 (Single)

## Basic Facts

*Floor:* Exposed (hardwood or tile)

*Furniture included:*

- Bed
- Desk
- Dresser (Drawers only)
- Bureau (Drawers and Hanging Space)
- Chair
- Bookcase
- Mirror

*Adjustable Bed Height:* No

*Closet:* Yes

rather small (about a foot deep); very small shelf on top left; room for hanging clothes, and some floor space

*White Board on door:* No

*Slanted Ceilings:* No

## Light

*Number of Windows:* 3

*Plenty of natural light:* Yes

Lots of light in the morning and early afternoon, but gets darkish in the evening.

*Time of day with most light:* Morning

*Without additional light, the room is well lit:* No

*Additional Comments:* Only one overhead light (not particularly bright) and a light for the mirror above the sink.

## Temperature

*Room Temperature:* Normal

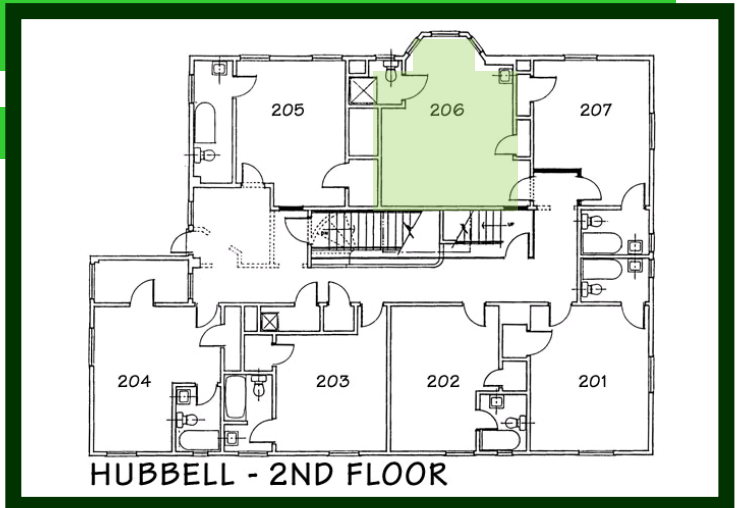
Can get a bit too warm at night, but otherwise it's a good temperature. This room is definitely on the warmer side of the house.

*Ability to adjust heat:* There is no way to adjust the temperature

One room (not this one) controls the temperature for all rooms on the floor.

## Unique Quirks

The private bathroom has a shower and a toilet, but the sink and mirror are outside the bathroom itself (still inside the room, though). It also has a wonderful bay window.



## Bathroom

People who share the bathroom: 0 (private bathroom)

Sinks: 1

Toilets: 1

Bathtubs: Shower

Windows: 1 window

Other comments: The sink is located outside the bathroom, and the toilet gets backed up easily. I had to buy a shower curtain because the one in the room was too short.





# Hubbell

207 (Single)

## Basic Facts

*Floor:* Exposed (hardwood or tile)

*Furniture included:*

- Bed
- Nightstand
- Desk
- Dresser (Drawers only)
- Chair
- Bookcase

*Adjustable Bed Height:* No

*Closet:* Yes

medium sized - one rod for hangers across the top, another off to the side.

*White Board on door:* No

*Slanted Ceilings:* No

## Light

*Number of Windows:* 2

*Plenty of natural light:* Yes

*Time of day with most light:* Morning

*Without additional light, the room is well lit:* Yes

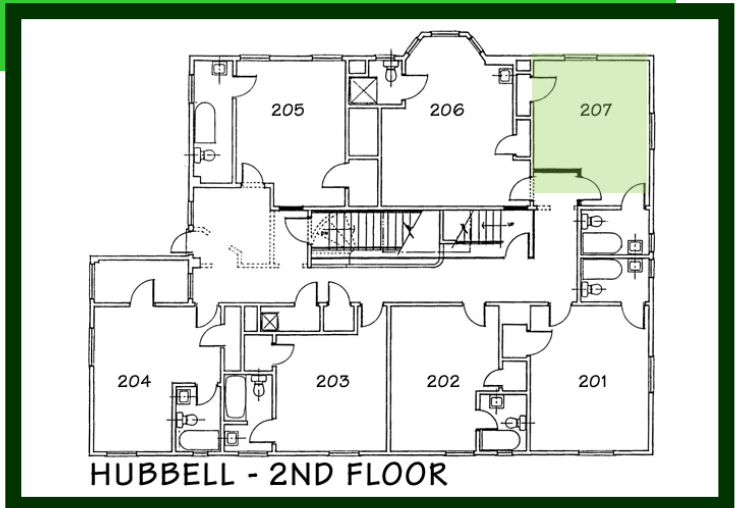
*Additional Comments:*

## Temperature

*Room Temperature:* Normal

*Ability to adjust heat:* There is no way to adjust the temperature

## Unique Quirks



## Bathroom

People who share the bathroom: 0 (private bathroom)

Sinks: 1

Toilets: 1

Bathtubs: Bathtub with showerhead

Windows: 1 window

Other comments:

# Hubbell

302 (Single)

## Basic Facts

*Floor:* Exposed (hardwood or tile)

*Furniture included:*

- Bed
- Nightstand
- Desk
- Bureau (Drawers and Hanging Space)
- Chair
- Bookcase
- Mirror

*Adjustable Bed Height:* No

*Closet:* Yes

small, top shelf, one rod to hang clothes on

*White Board on door:* No

*Slanted Ceilings:* No

## Light

*Number of Windows:* 0

*Plenty of natural light:* Yes

*Time of day with most light:* Don't notice

*Without additional light, the room is well lit:* Yes

*Additional Comments:*

## Temperature

*Room Temperature:* Normal

*Ability to adjust heat:* There is no way to adjust the temperature

## Unique Quirks

## Bathroom

People who share the bathroom: 0 (private bathroom)

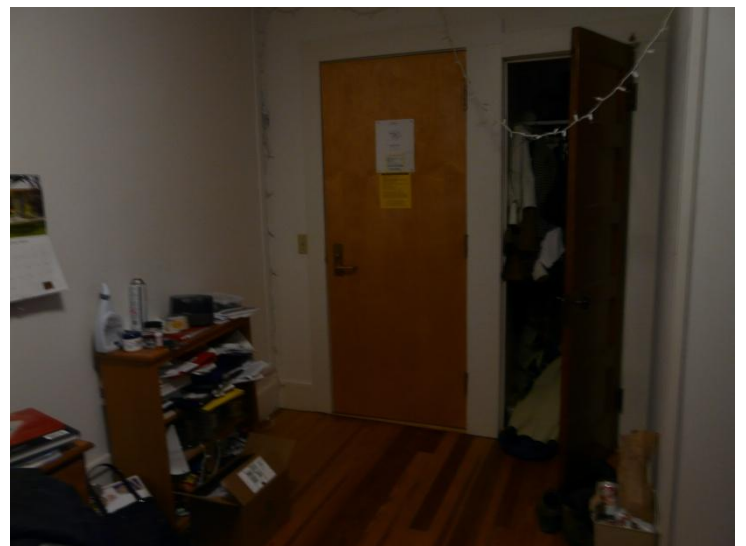
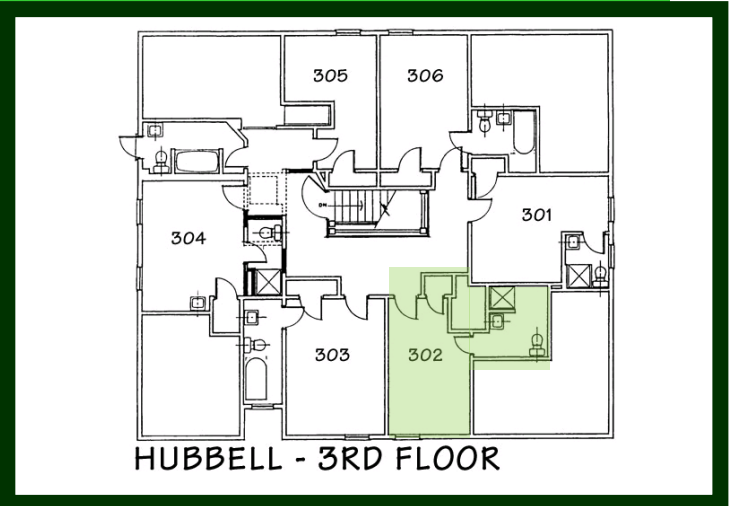
Sinks: 1

Toilets: 1

Bathtubs: Shower

Windows: 1 window

Other comments:



# Hubbell

304 (Single)

## Basic Facts

*Floor:* Exposed (hardwood or tile)

*Furniture included:*

- Bed
- Desk
- Dresser (Drawers only)
- Chair
- Bookcase
- Mirror
- Closet, bathroom, sink (inside)

*Adjustable Bed Height:* No

*Closet:* Yes

somewhat small

*White Board on door:* Yes

*Slanted Ceilings:* No

## Light

*Number of Windows:* 2

*Plenty of natural light:* Yes & No

This room faces the trees, but light does get through in the daytime, it's just not that bright

*Time of day with most light:* Afternoon

*Without additional light, the room is well lit:* No

*Additional Comments:* There's no lighting in the closet, but there is an electric outlet right next to it, which makes it easy to buy a lamp. I'd also suggest buying one of those sticky lights for the interior of the closet, because sometimes a lamp just isn't enough. Other th

## Temperature

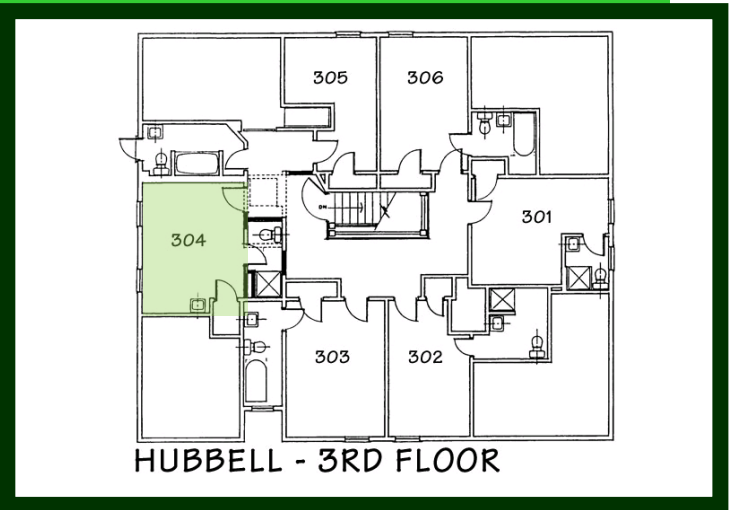
*Room Temperature:* Cold

There's no way to adjust your own heat and the windows aren't well insulated so it's pretty cold in here most of the time. Also the shower takes forever to heat up, which is really annoying when you're in a rush.

*Ability to adjust heat:* There is no way to adjust the temperature

## Unique Quirks

There's a sink inside the bedroom (not in the bathroom), it's a little weird at first but you get used to it. Also the windows aren't insulated well so it gets pretty cold in the winter.



## Bathroom

People who share the bathroom: 0 (private bathroom)

Sinks: 1

Toilets: 1

Bathtubs: Shower

Windows: No windows

Other comments: The water takes a really long time to heat up (year-round)



# Hubbell

306 (Single)

## Basic Facts

*Floor:* Exposed (hardwood or tile)

*Furniture included:*

- Bed
- Nightstand
- Desk
- Dresser (Drawers only)
- Chair
- Bookcase
- Mirror

*Adjustable Bed Height:* No

*Closet:* Yes

The closet is very small.....The depth is the problem, it hardly is one hanger deep so when i hang my clothes up and shut the door, the door pushes on the hangers and pushes all of my clothes in!

*White Board on door:* No

*Slanted Ceilings:* Yes

My bathroom has completely slanted ceilings..this is not a problem for the sink or the toilet....HOWEVER there is no shower, ONLY A BATH TUB....it would be great if this tub could be advertised because i hate baths and are forced to take them, where as th

## Light

*Number of Windows:* 0

*Plenty of natural light:* No

it is generally dark because the window is on the smaller-side.

*Time of day with most light:* Morning

*Without additional light, the room is well lit:* No

*Additional Comments:* very dark, absolutely MUST HAVE lamps!

## Temperature

*Room Temperature:* Hot

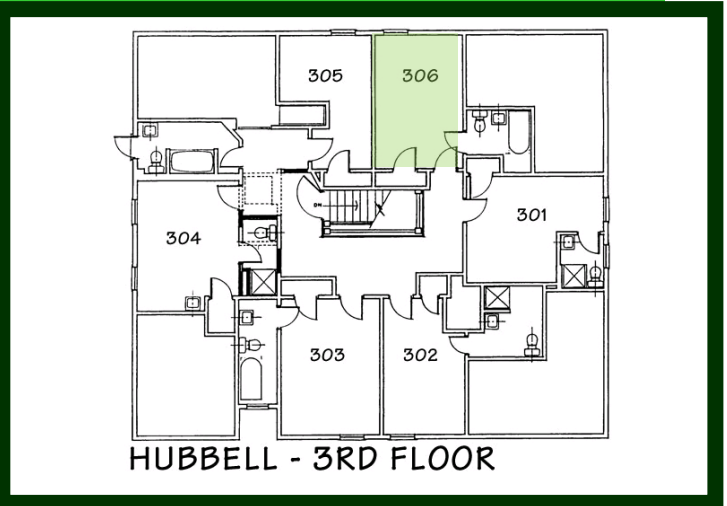
VERY VERY VERY VERY HOT. the control for heat in my room is not located in my room, and it is so hot that i have to leave the window open all winter long and have a fan to blow in the cold air. in the summer, the room is sweltering because it is virtual

*Ability to adjust heat:* There is no way to adjust the temperature

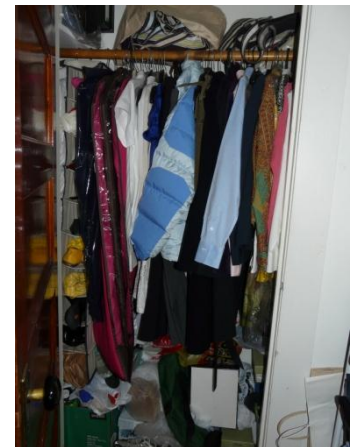
located in someone elses room maybe?

## Unique Quirks

BATH TUB. no shower because of slanted ceilings. can only take baths. alot of pipes coming out of the walls inhibiting being able to move furniture around.



HUBBELL - 3RD FLOOR



## Bathroom

People who share the bathroom: 0 (private bathroom)

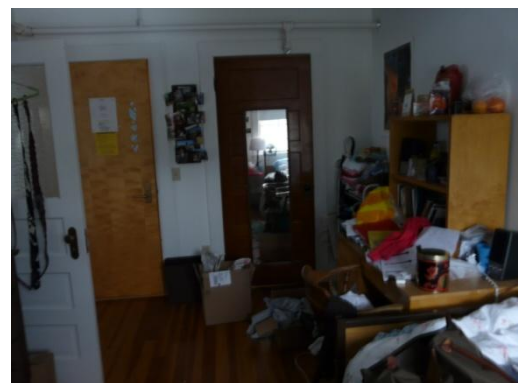
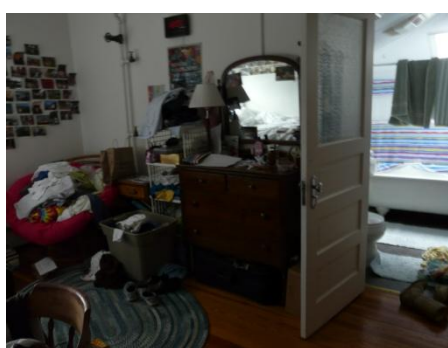
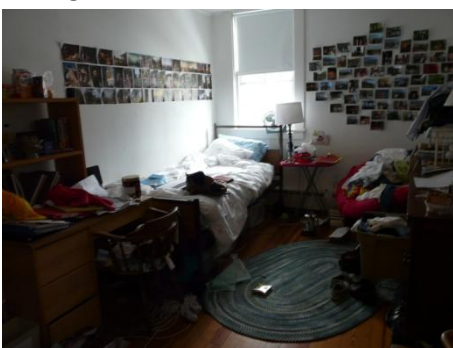
Sinks: 1

Toilets: 1

Bathtubs: Bathtub

Windows: 1 window

Other comments: there is a showerhead but because the ceilings are slanted, you can't stand up or anything, so it is very much a bath tub!



# Hubbell

## 202 (Single)

### Basic Facts

*Floor:* Exposed (hardwood or tile)

*Furniture included:*

- Bed
- Desk
- Dresser (Drawers only)
- Chair

*Adjustable Bed Height:* Yes

*Closet:* Yes

*White Board on door:* No

*Slanted Ceilings:* No

### Light

*Number of Windows:* 2

*Plenty of natural light:* Yes

*Time of day with most light:* Morning

*Without additional light, the room is well lit:* Yes

*Additional Comments:*

### Temperature

*Room Temperature:* Normal

*Ability to adjust heat:* There is no way to adjust the temperature

### Unique Quirks

### Bathroom

People who share the bathroom: 0 (private bathroom)

Sinks: 1

Toilets: 1

Bathtubs: Bathtub with showerhead

Windows: 1 window

Other comments: