

Dodd

304 (Single)

Basic Facts

Floor: Carpeted

Furniture included:

- Bed
- Desk
- Dresser (Drawers only)
- Chair
- Bookcase
- Mirror

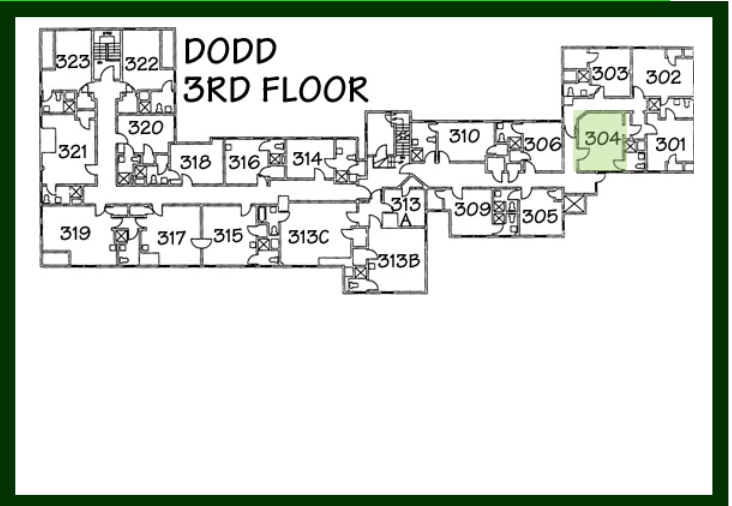
Adjustable Bed Height: No

Closet: Yes

I feel that it is too small.

White Board on door: Yes

Slanted Ceilings: No



Light

Number of Windows: 3

Plenty of natural light: Yes

It gets too bright in the morning.

Time of day with most light: Morning

Without additional light, the room is well lit: No

Additional Comments: Only one side of the room gets light from the ceiling.

Temperature

Room Temperature: Hot

Cannot turn off/adjust heat in any ways--it sucks.

Ability to adjust heat: Yes, there is a thermostat

Yes, there is a thermostat (Though it NEVER works, and never got fixed.)

Unique Quirks

Bathroom

People who share the bathroom: 0 (private bathroom)

Sinks: 1

Toilets: 1

Bathtubs: Shower

Windows: 1 window

Other comments: My bathroom's pipes make loud noises.

Dodd

305 (Single)

Basic Facts

Floor: Carpeted

Furniture included:

- Bed
- Nightstand
- Desk
- Dresser (Drawers only)
- Chair
- Bookcase
- Mirror

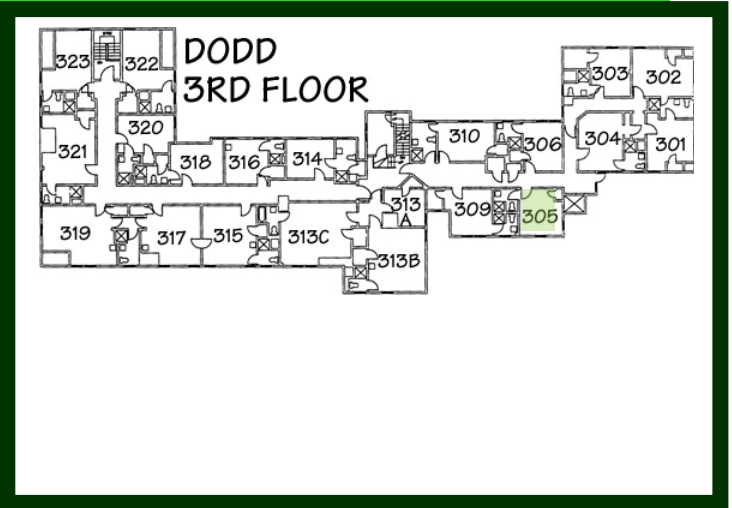
Adjustable Bed Height: Yes

Closet: Yes

It is slightly smaller in width than the doorway, with one bar off of which to hang things. There is also a hook on the left-hand side.

White Board on door: Yes

Slanted Ceilings: No



Light

Number of Windows: 2

Plenty of natural light: Yes

Time of day with most light: Morning

Without additional light, the room is well lit: No

Additional Comments: There is one light in the middle of the ceiling that just doesn't do enough.

Temperature

Room Temperature: Hot

I think that every room at Williams College is too hot! If we all want to be so sustainable, turn the darn heat down and buy a sweater.

Ability to adjust heat: Yes, there is a thermostat

There's a knob on the radiator that I can turn, but even the lowest heat setting (while keeping the heat on) is really hot!

Unique Quirks

Bathroom

People who share the bathroom: 0 (private bathroom)

Sinks: 1

Toilets: 1

Bathtubs: Shower

Windows: No windows

Other comments:

Dodd

309 (Single)

Basic Facts

Floor: Carpeted

Furniture included:

- Bed
- Desk
- Dresser (Drawers only)
- Chair
- Bookcase
- Mirror

Adjustable Bed Height: No

Closet: Yes

Great closet, walk-in with a window. Lots of space, two huge shelves lots of hooks.

White Board on door: Yes

Slanted Ceilings: No

Light

Number of Windows: 2

Plenty of natural light: Yes

Time of day with most light: Morning

Without additional light, the room is well lit: Yes

Additional Comments: The closet could use a touch light for night time use.

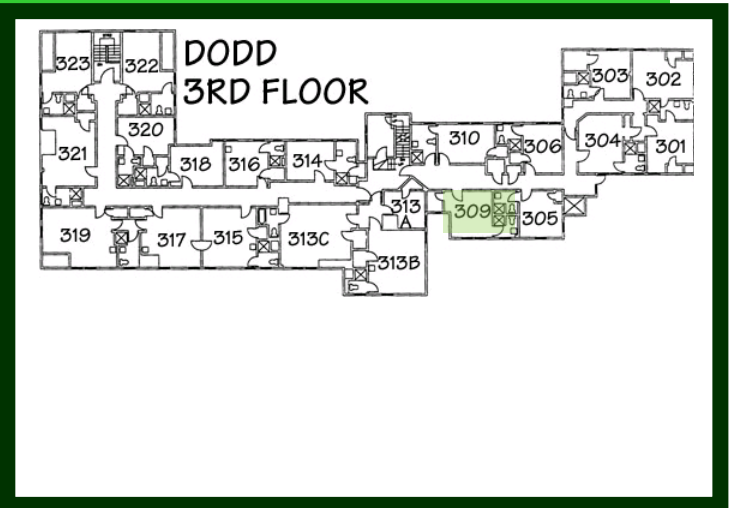
Temperature

Room Temperature: Normal

It gets warm on the third floor of Dodd any where but it you open a window it balances out. I don't turn the heat on

Ability to adjust heat: Yes, there is a thermostat

Unique Quirks



Bathroom

People who share the bathroom: 0 (private bathroom)

Sinks: 1

Toilets: 1

Bathtubs: Shower

Windows: 1 window

Other comments:

Dodd

314 (Single)

Basic Facts

Floor: Carpeted

Furniture included:

- Bed
- Nightstand
- Desk
- Dresser (Drawers only)
- Chair
- Bookcase
- Mirror

Adjustable Bed Height: No

Closet: Yes

It's pretty small with one shelf near the top. The closet is tucked in the back of the bathroom.

White Board on door: Yes

Slanted Ceilings: Yes

They don't interfere too much, since they're only in the bathroom.

Light

Number of Windows: 2

Plenty of natural light: Yes

It faces West, so it gets most of the light in the late afternoon.

Time of day with most light: Afternoon

Without additional light, the room is well lit: Yes

Additional Comments:

Temperature

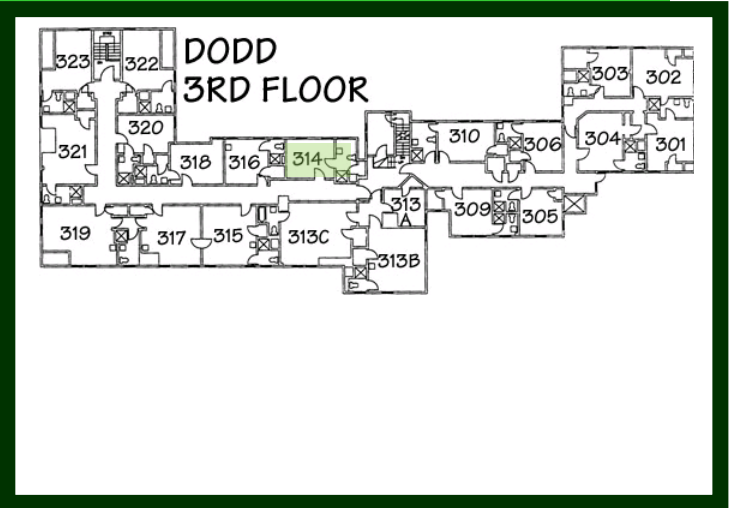
Room Temperature: Normal

As I mentioned earlier, the heater occasionally makes loud noises when it's above level 1.

Ability to adjust heat:

Unique Quirks

The closet is in the bathroom, but the bathroom is spacious. My radiator has been broken for most of the year; the mechanics have come in repeatedly to fix it, but after few weeks, it always goes back to making loud banging noises when it's above level 1. I think it might have a broken/rusty washer which should be replaced at some point.



Bathroom

People who share the bathroom:

Sinks: 1

Toilets: 1

Bathtubs: Shower

Windows: 1 window

Other comments:

Dodd

315 (Single)

Basic Facts

Floor: Carpeted

Furniture included:

- Bed
- Desk
- Dresser (Drawers only)
- Chair
- Bookcase
- Mirror

Adjustable Bed Height: No

Closet: Yes

White Board on door: Yes

Slanted Ceilings: No

Light

Number of Windows: 2

Plenty of natural light: No

Time of day with most light: Don't notice

Without additional light, the room is well lit: No

Additional Comments: The room is big and there is only the sink light and the regular light. It's kind of dim.

Temperature

Room Temperature: Hot

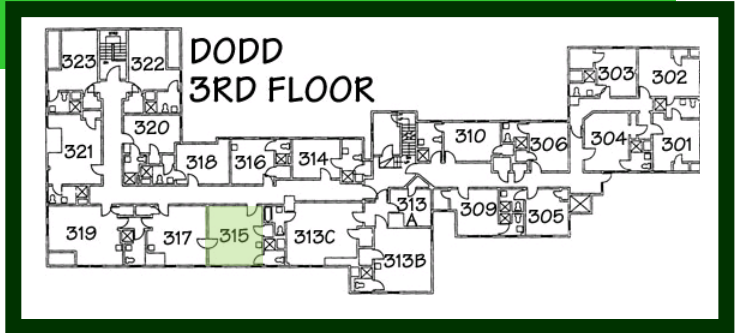
Usually too warm. I am unable to turn the heat off.

Ability to adjust heat: There is no way to adjust the temperature

There is a broken gauge to adjust the heat on the heater.

Unique Quirks

The sink is outside the bathroom. This and the heater make furniture placement impossible. Also, there is a door between my room and the room next to me, so I think we both hear everything that goes on in the other room. I also cannot turn the heat off.



Bathroom

People who share the bathroom: 0 (private bathroom)

Sinks: 1

Toilets: 1

Bathtubs: Shower

Windows: 1 window

Other comments:

Dodd

316 (Single)

Basic Facts

Floor: Carpeted

Furniture included:

- Bed
- Desk
- Dresser (Drawers only)
- Chair
- Bookcase
- Mirror

Adjustable Bed Height: No

Closet: Yes

White Board on door: Yes

Slanted Ceilings: No

Light

Number of Windows: 2

Plenty of natural light: No

Time of day with most light: Don't notice

Without additional light, the room is well lit: No

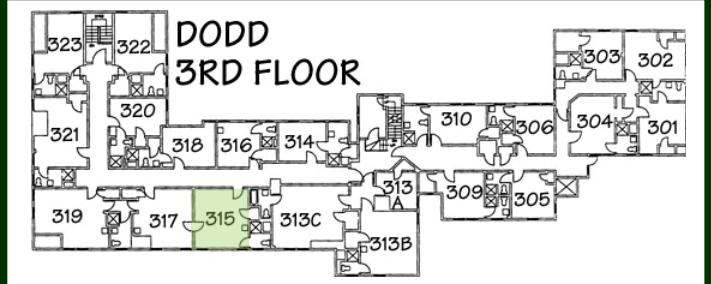
Temperature

Room Temperature: Hot

Ability to adjust heat: There is no way to adjust the temperature

Unique Quirks

The sink is outside the bathroom.



Bathroom

People who share the bathroom: 0 (private bathroom)

Sinks: 1

Toilets: 1

Bathtubs: Shower

Windows: 1 window

Other comments:

Dodd

317 (Double)

Basic Facts

Floor: Carpeted

Furniture included:

- Bed
- Desk
- Dresser (Drawers only)
- Bureau (Drawers and Hanging Space)
- Chair
- Bookcase
- Mirror
- Sink

Adjustable Bed Height: No

Closet: Yes

Quite large, with two bars for hanging clothing.

White Board on door: Yes

Slanted Ceilings: No

Light

Number of Windows: 2

Plenty of natural light: Yes

Windows faced east.

Time of day with most light: Morning

Without additional light, the room is well lit: Yes

Additional Comments:

Temperature

Room Temperature: Hot

The heater broke repeatedly and would overheat the room like crazy. Often, with the heater on its lowest setting, I'd have to open both windows in the middle of winter to control the temperature (huge waste of energy).

Also, because Dodd as a whole was

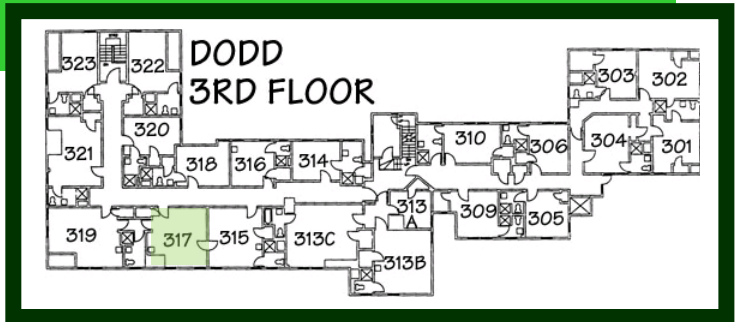
Ability to adjust heat: Yes, there is a thermostat

For some reason the thermostat was really ineffective.

Maybe it's been fixed since then.

Unique Quirks

It has a door that attaches to 315.



Bathroom

People who share the bathroom: 2 to 3

Sinks: 1

Toilets: 1

Bathtubs: Shower

Windows: 1 window

Other comments:

Dodd

318 (Single)

Basic Facts

Floor: Exposed (hardwood or tile)

Furniture included:

- Bed
- Nightstand
- Desk
- Dresser (Drawers only)
- Chair
- Bookcase
- Mirror

Adjustable Bed Height: Yes

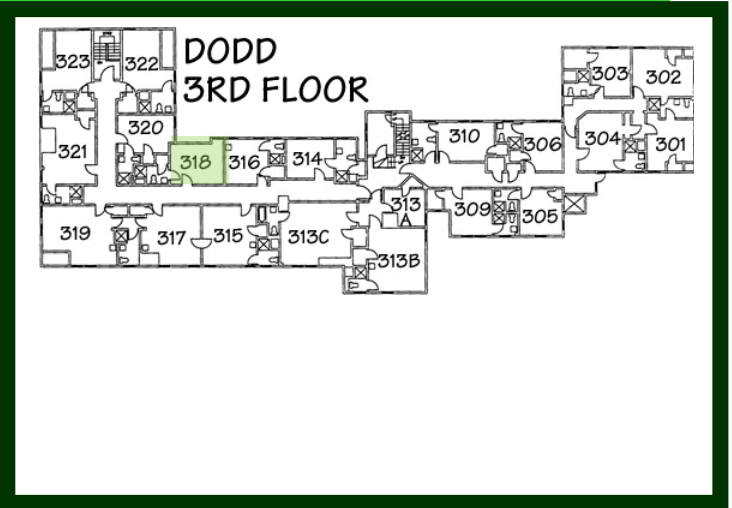
Closet: Yes

small with small shelf, slanted ceiling, in bathroom

White Board on door: Yes

Slanted Ceilings: Yes

All furniture except dresser can fit under it against the wall.



Light

Number of Windows: 0

Plenty of natural light: Yes

Best in fall and (probably) spring.

Time of day with most light: Afternoon

Without additional light, the room is well lit: No

Additional Comments: Not in corner by window in the morning

Temperature

Room Temperature: Hot

I keep my window open and my heat off most of the time and it's still often too hot.

Ability to adjust heat: Yes, there is a thermostat

The radiator is still warm when my heat is on 0 or the snowflake.

Unique Quirks

Bathroom

People who share the bathroom: 0 (private bathroom)

Sinks: 1

Toilets: 1

Bathtubs: Shower

Windows: No windows

Other comments:

Dodd

319 (Single)

Basic Facts

Floor: Exposed (hardwood or tile)

Furniture included:

- Bed
- Nightstand
- Desk
- Dresser (Drawers only)
- Bureau (Drawers and Hanging Space)
- Chair
- Bookcase
- Mirror

Adjustable Bed Height: Yes

Closet: Yes

White Board on door: Yes

Slanted Ceilings: Yes

Light

Number of Windows: 2

Plenty of natural light: Yes

Time of day with most light: Morning

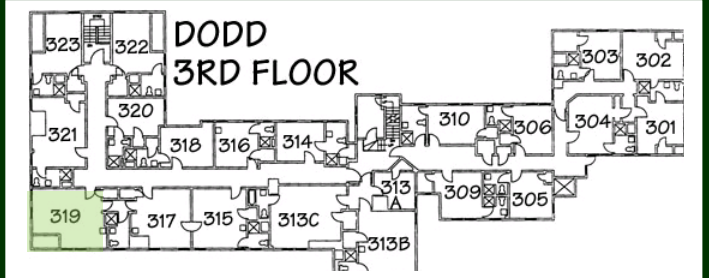
Without additional light, the room is well lit: Yes

Additional Comments:

Temperature

Room Temperature: Cold

Ability to adjust heat: Yes, there is a thermostat



Bathroom

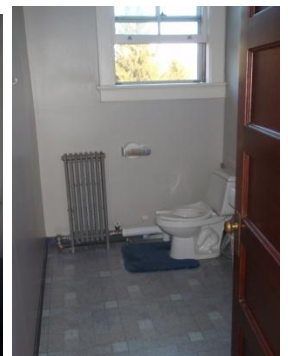
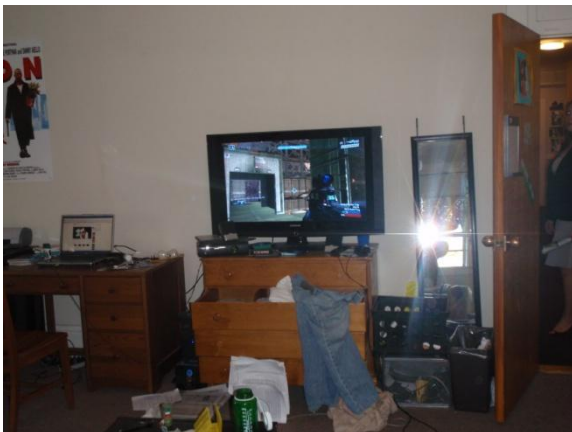
People who share the bathroom: 1

Sinks: 1

Toilets: 1

Bathtubs: Shower

Windows: 1 window



Dodd

320 (Single)

Basic Facts

Floor: Carpeted

Furniture included:

- Bed
- Nightstand
- Desk
- Dresser (Drawers only)
- Chair
- Bookcase
- There is a second, full length bookshelf and drawers built into the wall.

Adjustable Bed Height: Yes

Closet: Yes

Its normal sized with one shelf and one pole for hanging clothes.

White Board on door: Yes

Slanted Ceilings: Yes

Yes, I hit my head on my roof once. It slants very low, to the point that the only piece of furniture that you can put in that spot is the bed.

Light

Number of Windows: 0

Plenty of natural light: No

I only have one window that is blocked by the slanted roof.

Time of day with most light: Morning

Without additional light, the room is well lit: No

Additional Comments: The lighting is very dim

Temperature

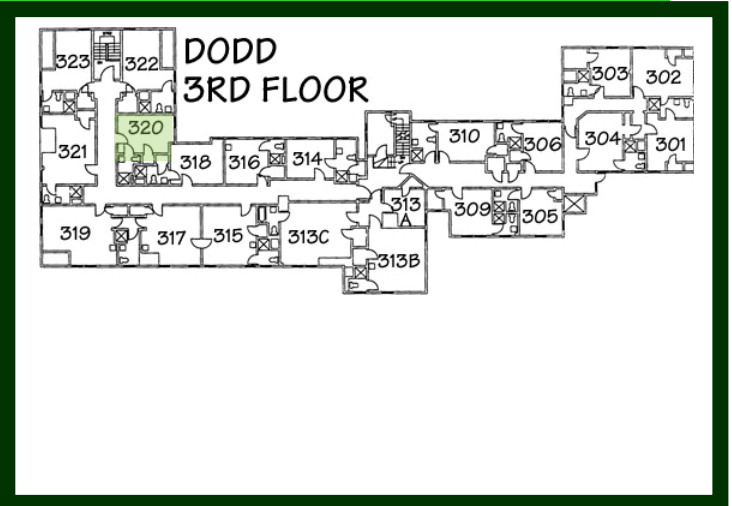
Room Temperature: Normal
see below

Ability to adjust heat: Yes, there is a thermostat

The heating is a bit strange. Sometimes it can get really cold in the room, but it can also get hot if you put the thermostat up too high.

Unique Quirks

There is only one window, that doesn't close all the way.



Bathroom

People who share the bathroom: 0 (private bathroom)

Sinks: 1

Toilets: 1

Bathtubs: Shower

Windows: No windows

Other comments:

Dodd

323 (Single)

Basic Facts

Floor: Carpeted

Furniture included:

- Bed
- Desk
- Dresser (Drawers only)
- Chair
- Bookcase
- Mirror

Adjustable Bed Height: No

Closet: Yes

Big and wonderful

White Board on door: Yes

Slanted Ceilings: Yes

No, it's pretty cool, actually

Light

Number of Windows: 3

Plenty of natural light: Yes

Time of day with most light: Don't notice

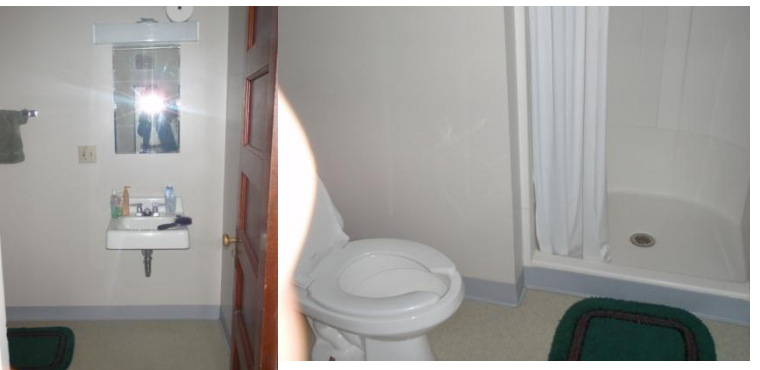
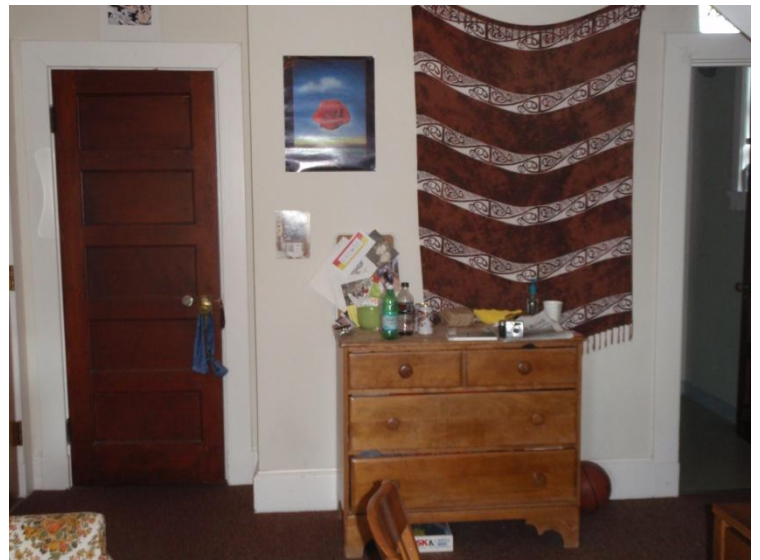
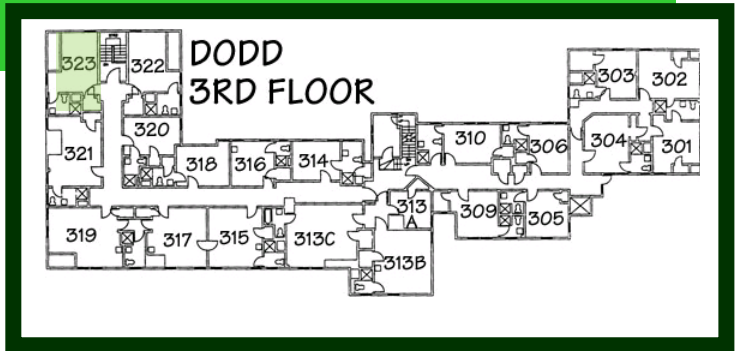
Without additional light, the room is well lit: Yes

Additional Comments:

Temperature

Room Temperature: Normal

Ability to adjust heat: Yes, there is a thermostat



Bathroom

People who share the bathroom: 0 (private bathroom)

Sinks: 1

Toilets: 1

Bathtubs: Shower

Windows: 1 window

Other comments:

Dodd

313A (Single)

Basic Facts

Floor: Carpeted

Furniture included:

- Bed
- Desk
- Dresser (Drawers only)
- Chair
- Bookcase

Adjustable Bed Height: No

Closet: Yes

very small, just enough to fit a 3 ft2 mini fridge, which is good though since it keeps out the fridge noise.

White Board on door: Yes

But it sucks. Can't wash markings off.

Slanted Ceilings: No

Light

Number of Windows: 1

Plenty of natural light: No

not even a normal view coz blocked by part of the house

Time of day with most light: Don't notice

Without additional light, the room is well lit: No

Additional Comments:

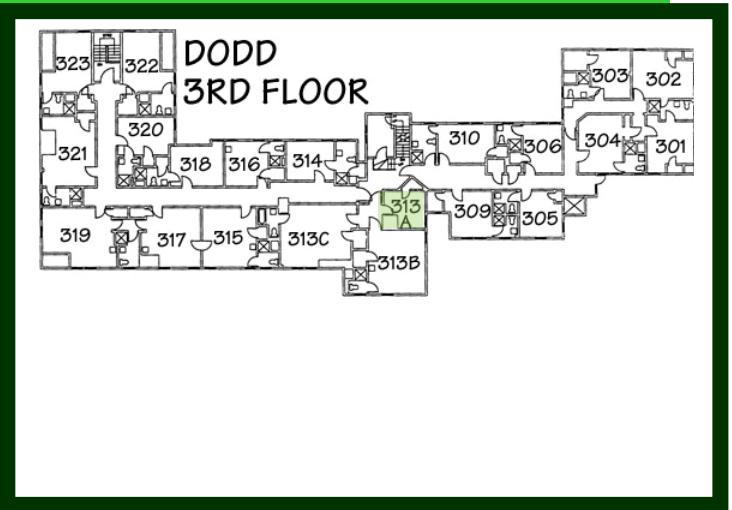
Temperature

Room Temperature: Normal

Ability to adjust heat: There is no way to adjust the temperature

Unique Quirks

window decrepit. air can get in quite easily from cracks.



Bathroom

People who share the bathroom: 1

Sinks: 1

Toilets: 1

Bathtubs: Shower

Windows: 1 window

Other comments:

Dodd

313B (Double)

Basic Facts

Floor: Carpeted

Furniture included:

- Bed
- Desk
- Dresser (Drawers only)
- Chair
- Mirror

Adjustable Bed Height: No

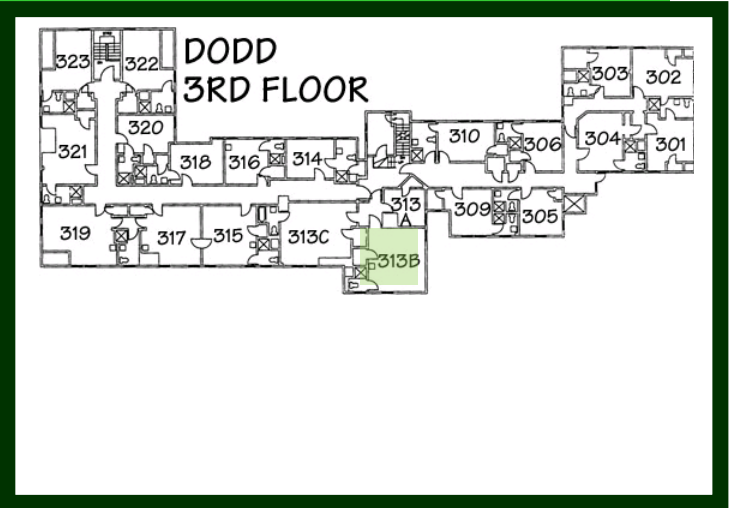
Closet: Yes

Good size, storage space, hooks, etc.

White Board on door: Yes

Slanted Ceilings: Yes

They do not interfere



Light

Number of Windows: 2

Plenty of natural light: Yes

Time of day with most light: Afternoon

Without additional light, the room is well lit: Yes

Additional Comments:

Temperature

Room Temperature: Normal

Ability to adjust heat: Yes, there is a thermostat

Unique Quirks

Bathroom

People who share the bathroom: 1

Sinks: 1

Toilets: 1

Bathtubs: Shower

Windows: 1 window

Other comments:

Dodd

322 (Single)

Basic Facts

Floor: Carpeted

Furniture included:

- Bed
- Desk
- Dresser (Drawers only)
- Chair
- Bookcase 2 – 1 large, 1 standard size
- In addition to the dresser, there are drawers built into the wall!

Adjustable Bed Height: Yes

Closet: Yes

A HUGE walk in closet with a bar running along the right and left side. There is a shelf going all the way around in a U shape and there are a ton of hooks!

White Board on door: Yes

Slanted Ceilings: Yes

This only effects one corner of the room. I put my bed under it so I don't really notice it.

Light

Number of Windows: 2

Plenty of natural light: Yes

Time of day with most light: Morning

Without additional light, the room is well lit: No, the room is L shaped so one short part of the L gets no light from the single ceiling lamp.

Additional Comments: There is no light in the closet so it is hard to see in it at night – ran a clip on lamp into it to solve that problem

Temperature

Room Temperature: Hot

I am always cold, but this room can get too hot even for me! This occurs particularly when the weather begins to get warm and everyone else turns their heat off – I think I get all of the leftover heat in the house. There is also a pipe in the bathroom that gets burning hot – it warms the toilet seat that is about 3 feet away from it!

Ability to adjust heat: Yes, there is a thermostat

Just the dial on the radiator – works to some degree though sometimes if I turn it off the heater is still very hot. Also, the radiator can get VERY hot, so turn the dial very gradually or you will wake up in the night unable to breathe.

Bathroom

People who share the bathroom: 1

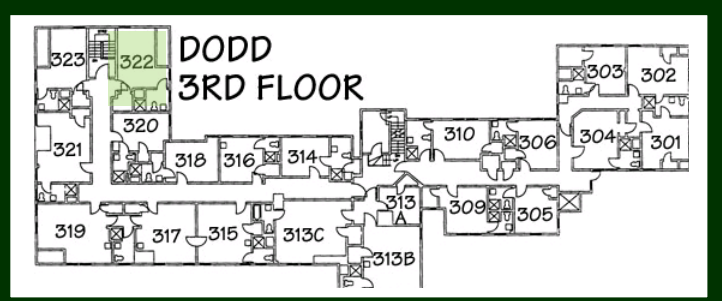
Sinks: 1

Toilets: 1

Bathtubs: Shower

Windows: 1

Other comments: A very nice, good size bathroom



Dodd

321 (Single)

Basic Facts

Floor: Carpeted

Furniture included:

- Bed
- Desk
- 2 Dressers (Drawers only)
- Chair
- Bookcase

Adjustable Bed Height: Yes

Closet: Yes

White Board on door: Yes

Slanted Ceilings: Yes

Light

Number of Windows: 2

Plenty of natural light: Yes

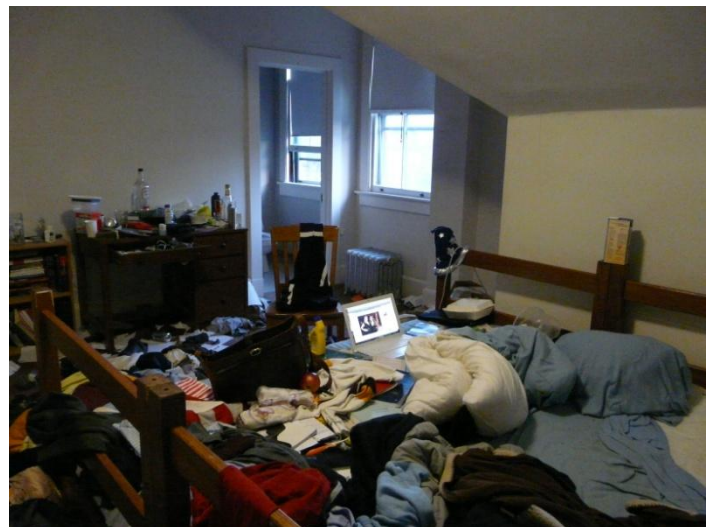
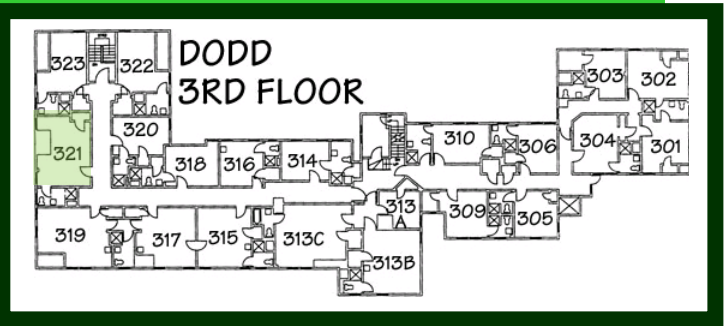
Time of day with most light: Morning

Without additional light, the room is well lit: No

Temperature

Room Temperature: Hot

Ability to adjust heat: Yes, there is a thermostat
Just the dial on the radiator



Bathroom

People who share the bathroom: 1

Sinks: 1

Toilets: 1

Bathtubs: Shower

Windows: 1

Other comments: awesome!

